

Oregon Water Resources Monitoring Strategy

Mellony Hoskinson

November 20, 2015



Oregon Water Resources Commission Meeting
Agenda Item N

Overview

- **Reasons for Development**
- **Monitoring Priorities**
- **Recommended Monitoring Actions**
- **Implementing the Monitoring Strategy**



Reasons for Development

- **Key Performance Measures (KPMs)**
- **Efficient and effective use of resources**
- **Interagency Coordination**
 - Federal, States, Tribes, Local groups
 - STREAM Team – Interactive Monitoring Strategies
- **Integrated Water Resources Strategy**
 - 2012 – Recommended Actions 1b and 1c
 - 2017 – Coming Pressures (Monitoring Priorities)



Monitoring Priorities

- **Climate Change**
- **Extreme Events**
- **Groundwater**
- **Water Management**
- **Instream Needs**
- **Water Supply**
- **Partnering with Other Agencies**



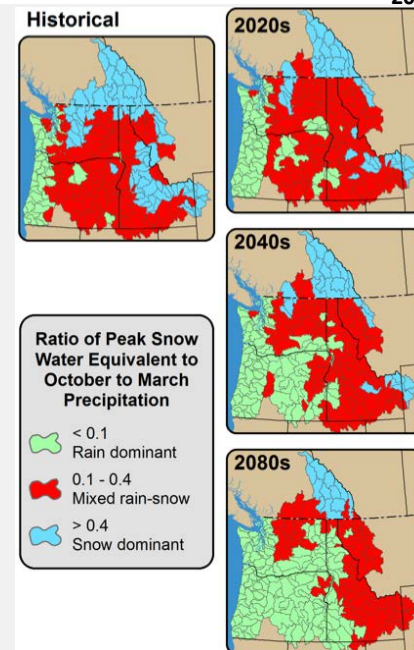
Climate Change

- Alter hydrology of streams
- Rising temperatures
- Precipitation as rain instead of snow
- High flow events

Recommended Monitoring Actions

- *Natural Streamflow*
- *Record is long-term, year round*
- *Located in areas of snow-rain transition*

Changes in snowpack over time (Hamlet, et al., 2013)



Extreme Events

- **Floods**
- **Drought**
- **Wildfire**



Stream gage on Fifteenmile Creek measuring 0.00 cfs. August 24, 2015



Christmas flood of 1964

Recommended Monitoring Actions

- *Early warning indicators*
- *Effective monitoring*
 - *High flows*
 - *Low flows*
- *Rapidly deploy gages in recently burned watersheds*



Groundwater

- **Groundwater Levels**
 - Inform conjunctive use management
 - Issuing new groundwater permits
- **Studies of Oregon's aquifers**
 - Capacity, location, extent
 - Assess groundwater availability
- **Surface water/Groundwater Interactions**

Recommended Monitoring Actions

- *Long-term data collection*
- *Hydraulic connection between aquifers*
- *Pair monitoring wells with stream gages*



Water Management

- **Distribution and Regulation**
- **Water Availability**
- **Water Use Data**



Watermaster Awbrey Perry measuring Tumalo Creek

Recommended Monitoring Actions

- *Flow meters on points of diversion*
- *Measures return flows*
- *Consumptive use*



Instream Needs

- **Recreation**
- **Pollution abatement**
- **Navigation**
- **Fish and wildlife populations**



Oregon Spotted Frog

Recommended Monitoring Actions

- *Sensitive, Threatened, Endangered Species*
- *Restoration and Conservation activities*
- *Scenic Waterways*



Coho Salmon



Water Supply

- **Population increases**
- **Changing climate**
- **Shifts in land use**

Recommended Monitoring Actions

- *Establish gages and wells in watersheds with predicted increased demand*
- *Measures snow-pack and runoff*
- *Measures actual water use*



Partnering with Other Agencies

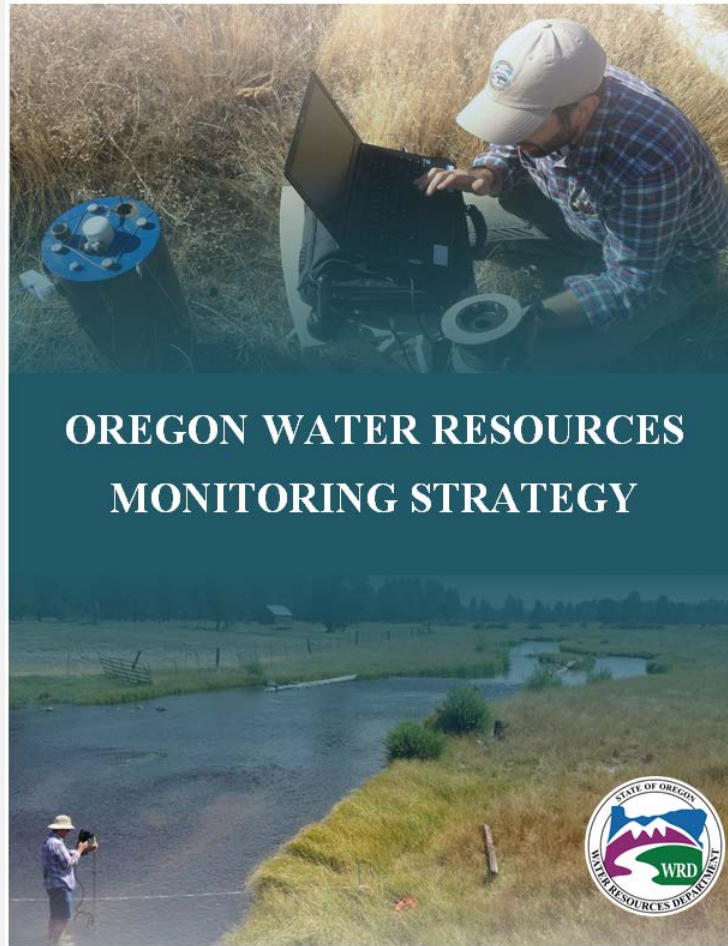
- **Water Supply Development Projects**
- **Design Flow Prescriptions**
- **Monitor Water Quality**
- **Restore and Conserve Habitat**

Recommended Monitoring Actions

- *Partner with USGS, ODFW, DEQ, OWEB, tribes*
- *Develop monitoring protocols*
 - *Deploying instruments*
 - *Data collection, management, and sharing*



Implementing the Monitoring Strategy



Next Steps

- **Database Enhancements**
 - Advanced querying capabilities
- **Coordinate with External Partners**
- **Network Evaluations**



Database Enhancements

- **Add new attributes**
 - Natural Streamflow
 - Regulation of Instream Water Rights
 - Extreme Events
 - Surface Water/Groundwater Interactions
- **Update/Verify current attributes**
 - Update Elevation
 - Verify Streamflow type
- **Flag problematic sites**
 - Data quality issues
 - Safety concerns
 - Difficult to access



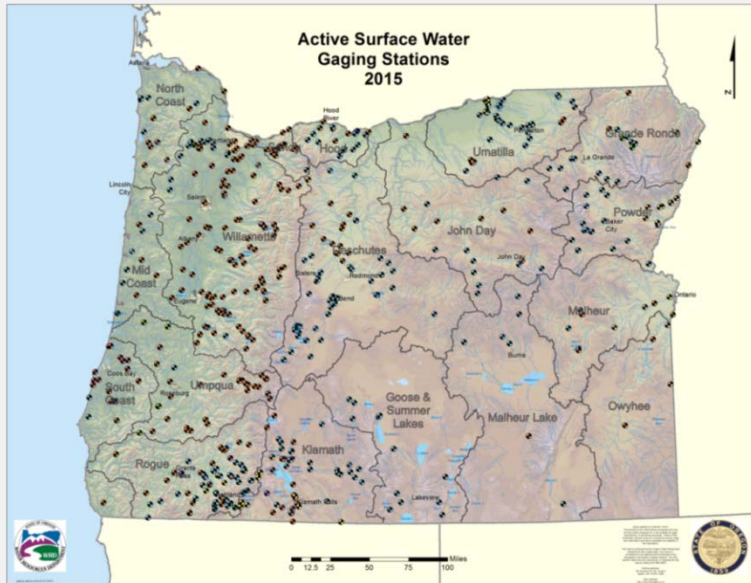
Coordinate with External Partners

- **Solicit input on monitoring site locations**
 - Shared form with STREAM Team members
 - Received feedback from DEQ, ODF, ODA
- **Cooperative efforts with USGS**
- **Coordination with OWEB**
 - Local monitoring projects



Network Evaluations

- Database enhancements
- Input from partners
- Meeting needs of
Monitoring Priorities
- Determine future
monitoring site locations



OWRD STREAM GAGING NETWORK EVALUATION FOR WATER DISTRIBUTION

Jonathan L. La Marche, PE

State of Oregon
Water Resources Department

Open File Report SW 2011 – 01



November 2011

Acknowledgements

Brenda Bateman

Ivan Gall

Jonathan LaMarche

Ken Lite

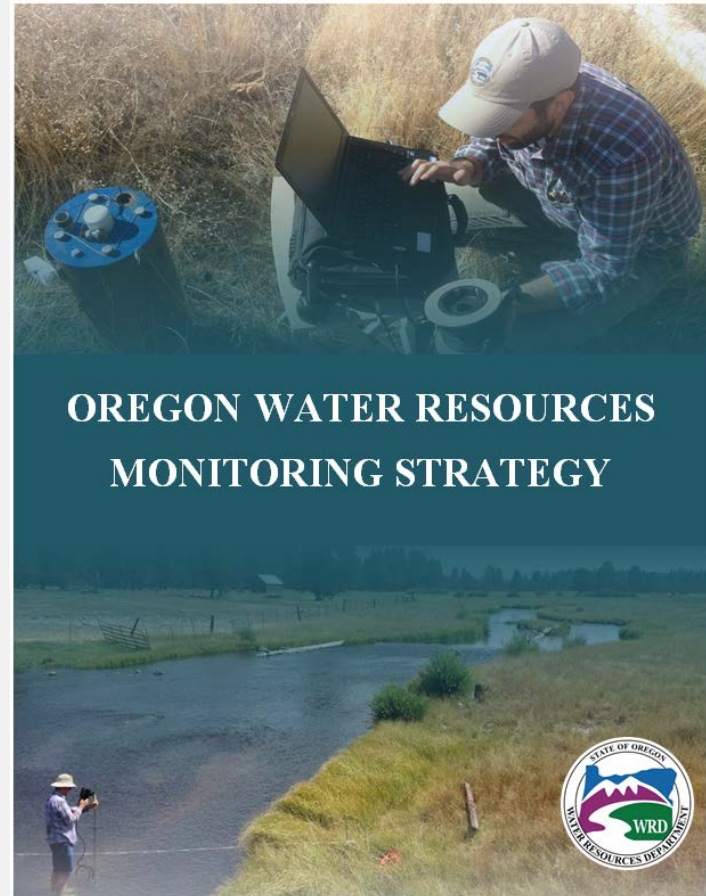
Rachel LovellFord

Rich Marvin

Alyssa Mucken

Ken Stahr

Karl Wozniak



Questions?

Mellony Hoskinson

Technical Services Division

Oregon Water Resources Department

503-986-0832

Mellony.D.Hoskinson@wrd.state.or.us

