

Place-Based Integrated Water Resources Planning Funding Recommendations



Kim Ogren, Senior Water Resources Development Advisor

Harmony Burrigh, Planning Coordinator

Steve Parrett, Planning Coordinator



Overview

- 1 IWRS: Recommended Action 9A
- 2 Pilot Phase Objectives
- 3 Solicitation Process
- 4 Summary of Letters of Interest Received
- 5 Review and Evaluation Process
- 6 Funding Recommendations



Integrated Water Resources Strategy

**Recommended
Action 9A:
Undertake Place-
Based Integrated
Water Resources
Planning**





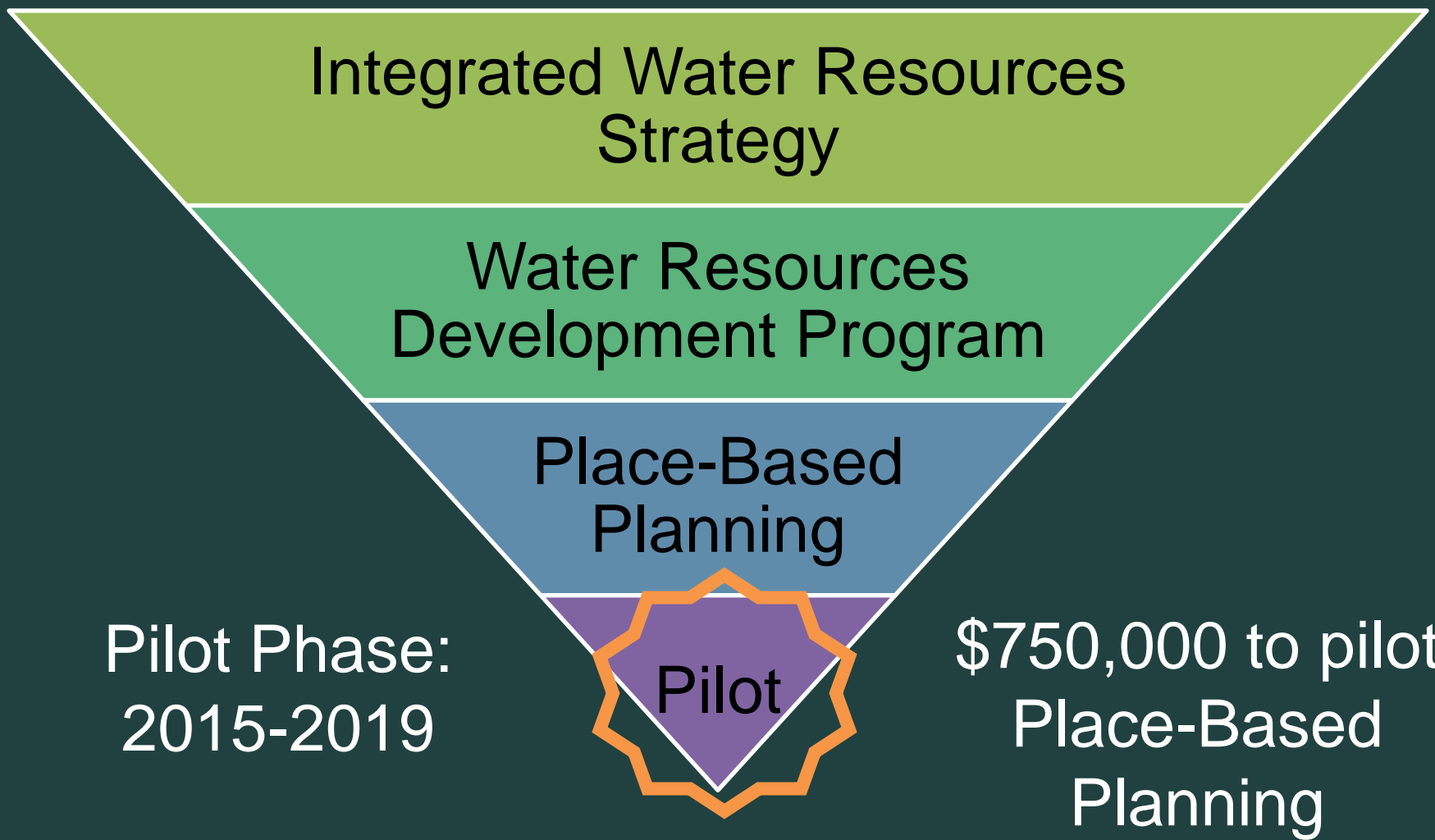
Place-Based Planning

Voluntary, non-regulatory, locally initiated and led effort in which a balanced representation of water interests within a hydro-geographic area (e.g., basin or watershed) work in partnership with the state to understand their water resources and develop integrated solutions to address water challenges.





Place-Based Planning Pilot Phase





Pilot Phase Objectives

- Test guidelines in diverse places
- Gather feedback on framework and guidelines
- Gain experience to inform the IWRS
- Develop two plans and outcomes by 2019
- Catalyze collaboration and integration
- Explore integration with other groups, efforts, and programs
- Build local capacity and support
- Leverage funding and maximize investments



Solicitation

- Request for Letters of Interest: October 8, 2015 through December 7, 2015
- Two weeks to submit additional materials



Request for Letters of Interest Place-Based Integrated Water Resources Planning Grant

About this Document

This request for letters of interest announces the availability of financial assistance for communities that seek to undertake place-based integrated water resources planning in Oregon. The Oregon Water Resources Department has \$750,000 available to distribute in the form of grants. This funding will be distributed on a competitive basis to a select number of successful applicants who will partner with the Department to build a collaborative process that pilots the Draft Place-Based Planning Guidelines and results in a place-based integrated water resources plan. The Department anticipates awarding 2-4 grants and will also be offering planning and technical assistance.

Announcement Date: October 8, 2015
Deadline: December 7, 2015
Total Amount Available: \$750,000
Description: Grants will support place-based integrated water resources planning pilots in Oregon.



Engagement

Outreach

Conferences, annual meetings, other presentations

Email list serves

>80 inquiries

>10 meetings with interested parties

Assistance

Developed frequently asked questions

10 pre-application meetings

Reviewed 8 draft Letters of Interest

All applicants received some assistance



Letters of Interest by the Numbers



16 Letters of Interest



100 letters of support



Total request of \$3.6 million dollars



All five OWRD regions represented



Portions of 19 counties included



Letters of Interest

- Malheur Lake
- North Powder
- Upper Grande Ronde

Eastern

- Lower John Day
- Walla Walla

North Central

- Rogue
- Lower Rogue

Southwest

- Klamath

South Central¹

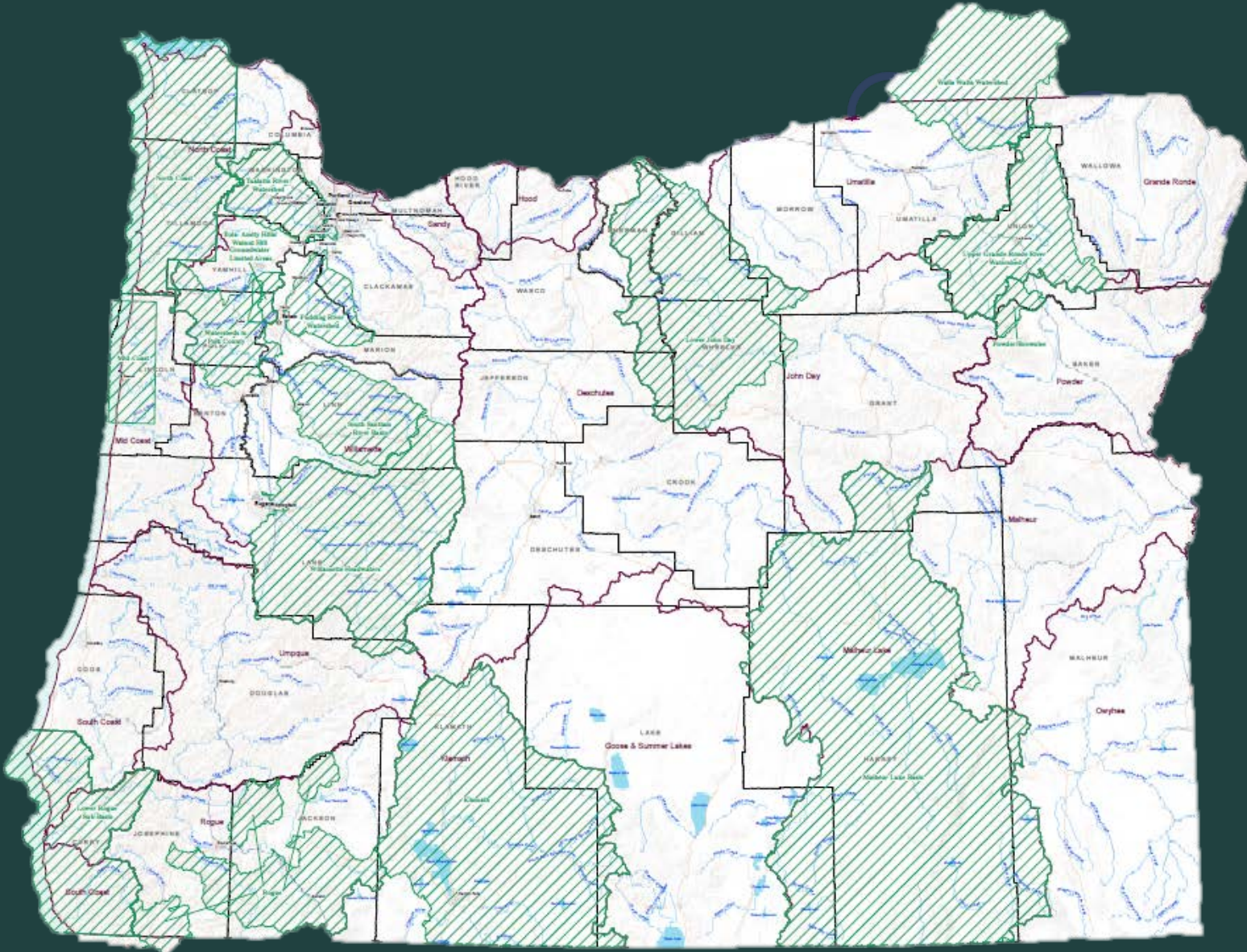
- Eola-Amity/
Walnut Hills
- Polk County
- Upper Willamette
- Pudding
- South Santiam
- Tualatin

Northwest

^[1] Withdrawn by applicant



Place-Based Planning Interest





Review and Evaluation Process

Public Comments | Internal Review | Inter-Agency Review



Inter-Agency Review Team Meeting



Internal Discussions



Public Comments

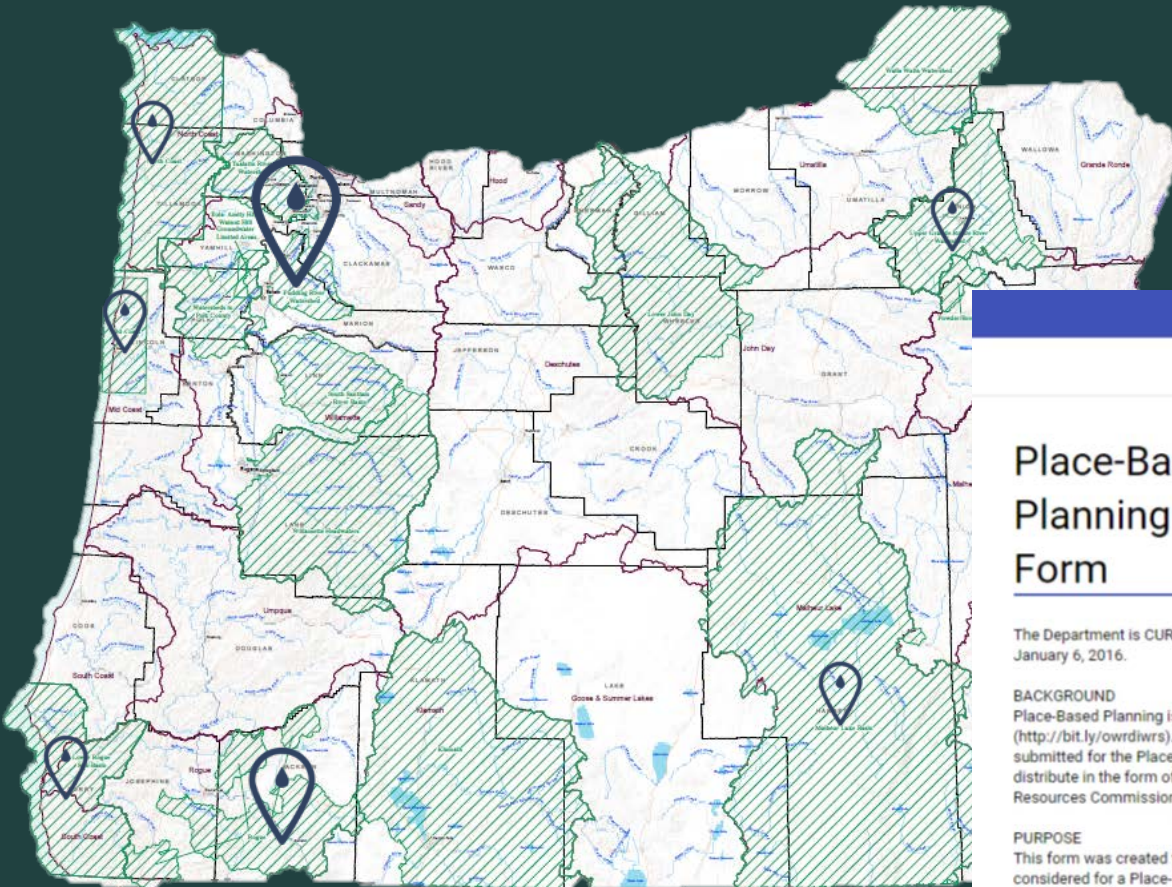


Commission Meeting



Public Comments

» 23 Comments



QUESTIONS

RESPONSES

20

Place-Based Integrated water Resources Planning Pilots - Letters of Interest Comment Form

The Department is CURRENTLY ACCEPTING PUBLIC COMMENTS on the Place-Based Planning Letters of Interest through January 6, 2016.

BACKGROUND

Place-Based Planning is a recommended action from the 2012 Integrated Water Resources Strategy (<http://bit.ly/owrdiwr>). The Oregon Water Resources Department is in the process of reviewing Letters of Interest submitted for the Place-Based Integrated Water Resources Planning Pilot Grant. The Department has \$750,000 to distribute in the form of grants and is currently reviewing materials to make funding recommendations to the Water Resources Commission at their February meeting. Letters of Interest were due to the Department on December 7, 2015.

PURPOSE

This form was created to allow interested individuals to provide information or comments on the places that are being considered for a Place-Based Planning Pilot Grant administered by the Oregon Water Resources Department. For more information about Place-Based Planning, please visit our website: <http://bit.ly/owrdplanning>.

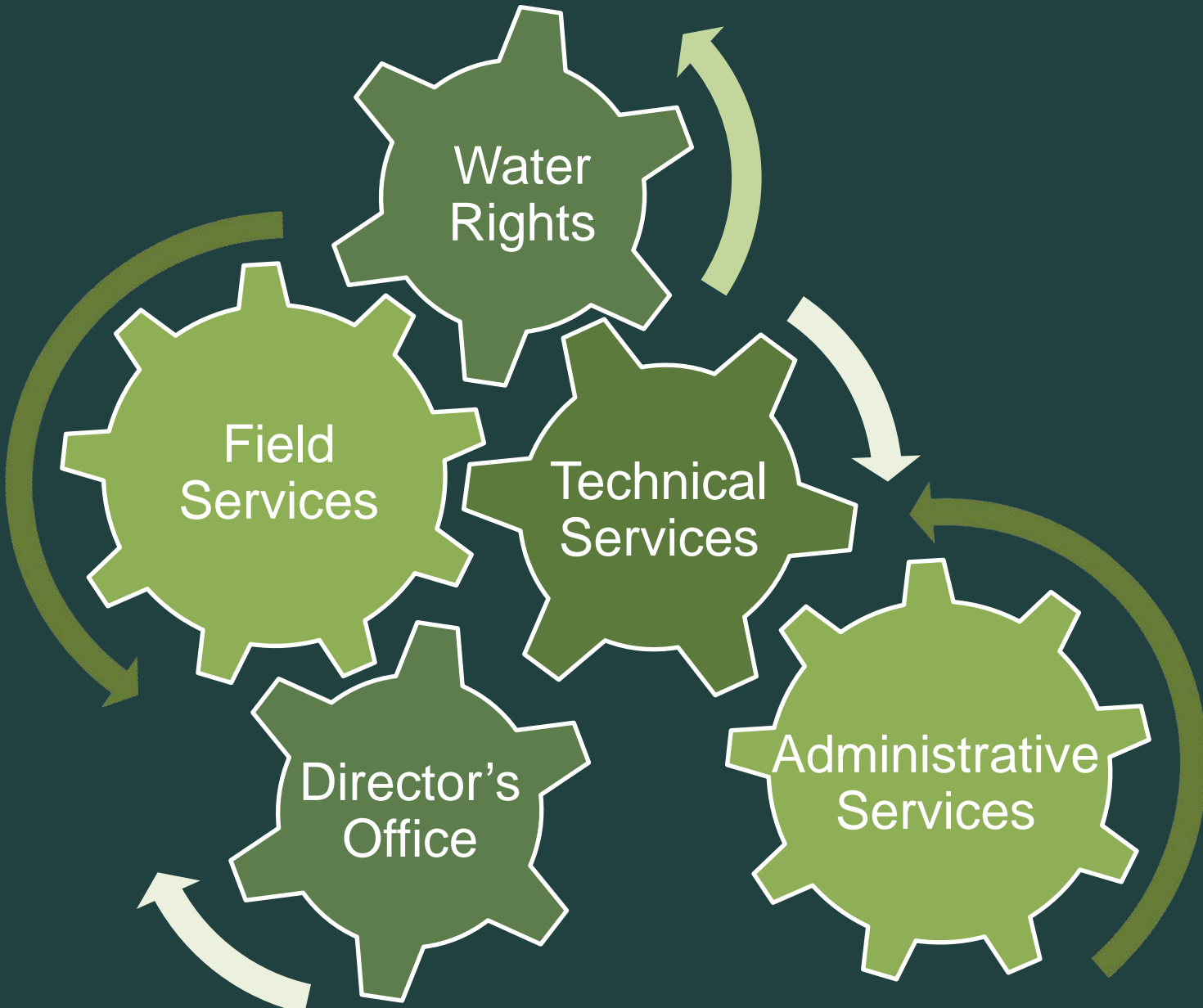
Comments and questions can also be submitted to placebasedplanning@wrdd.state.or.us. If your comment is about a particular letter of interest, please include the Letter of Interest ID in the subject.

Information provided to OWRD in this form may be subject to Oregon Public Records law and available to the public. Please be thoughtful and courteous.

Tell us about yourself



Internal Review



Water Rights

Field Services

Technical Services

Director's Office

Administrative Services



Inter-Agency Review





Evaluation Criteria, Factors and Considerations

Evaluation Criteria

- Leadership
- Partnerships
- Capacity
- Planning Needs /Outcomes
- Integration
- Approach

Variation Among Pilots

- Geography/ scale
- Convener
- History
- Capacity
- Proposed approach

Other Considerations

- Pilot objectives
- Fit for pilot phase
- Need for assistance
- Readiness
- Likelihood of completion



Summary of Groupings

	Group A	Group B	Group C	Group D
Leadership	High	Moderate	Moderate	Uncertain
Partnerships	High	Moderate	Moderate	Uncertain
Capacity	High	Moderate	Moderate	Uncertain
Integration	High	Moderate	Fair	Uncertain
Needs/Outcomes	High	Moderate	Fair	Uncertain
Approach	High	Moderate	Fair	Uncertain
Need for Assistance	Moderate	High	Moderate	Uncertain
Readiness	High	High	Moderate	Uncertain
Likelihood of Completion	High	Moderate	Moderate	Uncertain

High

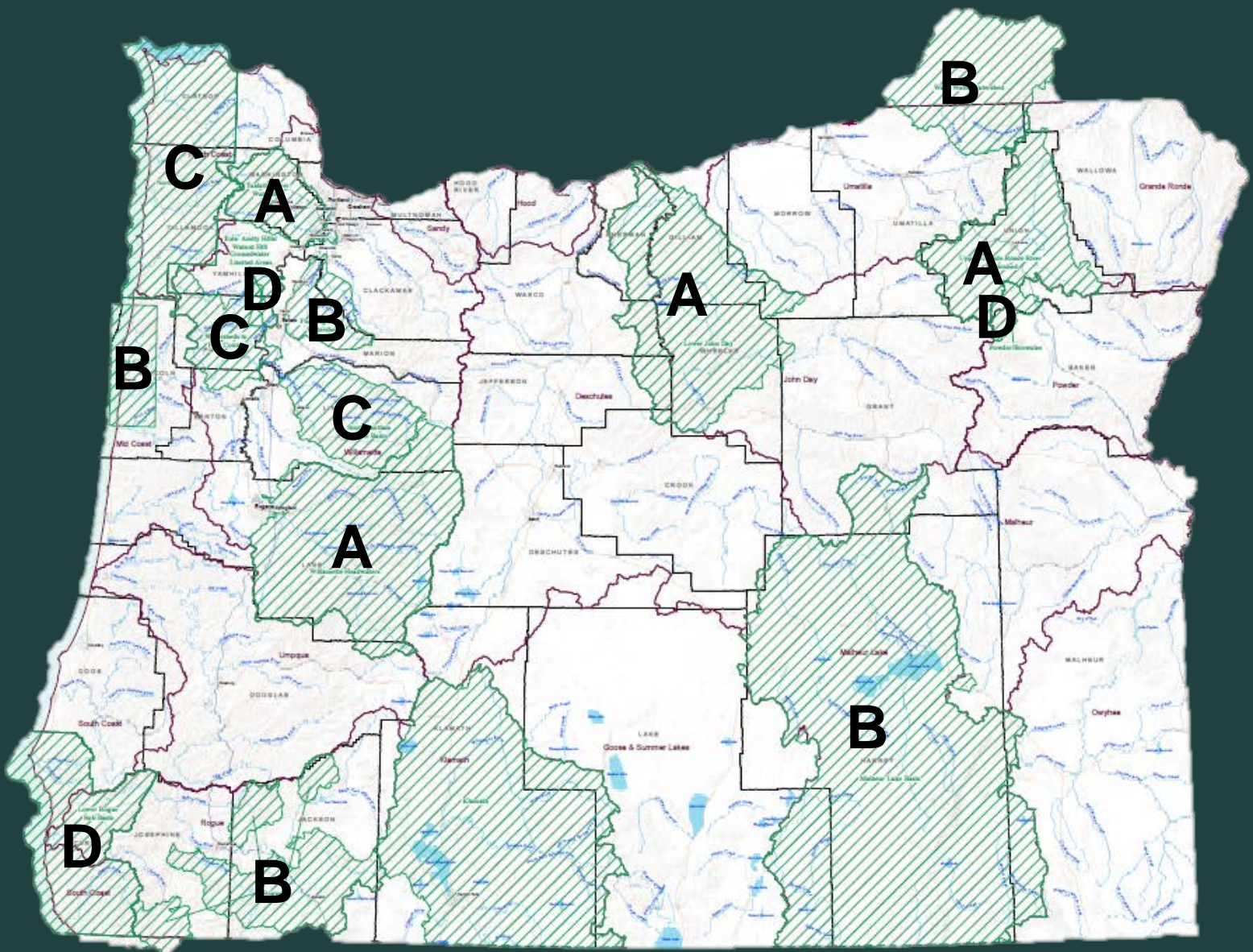
Moderate

Fair

Uncertain

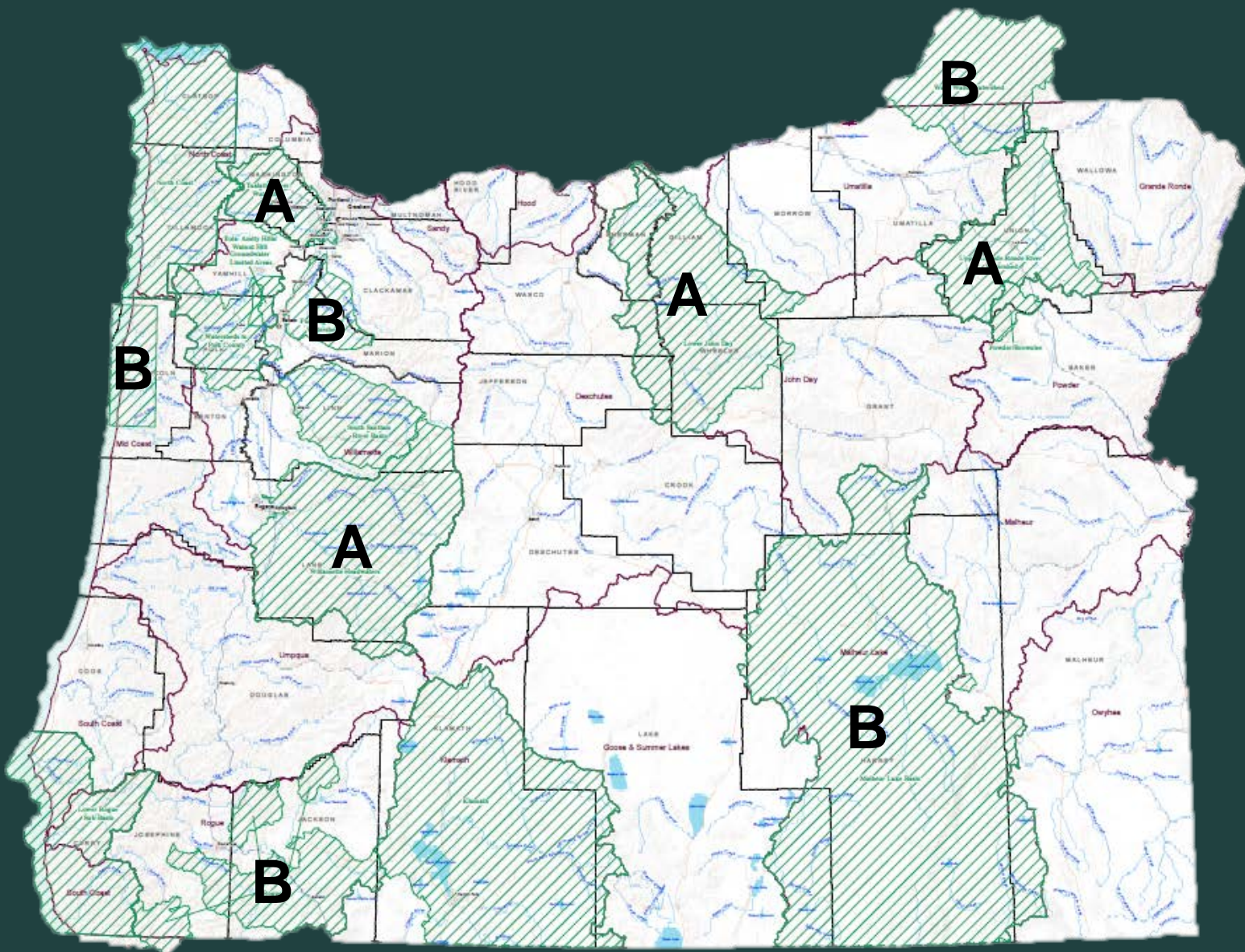


Summary of Groupings





Groups A & B





Group A

Group A – Excellent in all criteria, highest likelihood of developing a Place-Based Plan in 2-3 years, moderate need

- Lower John Day
- Upper Grande Ronde
 - Tualatin
- Upper Willamette



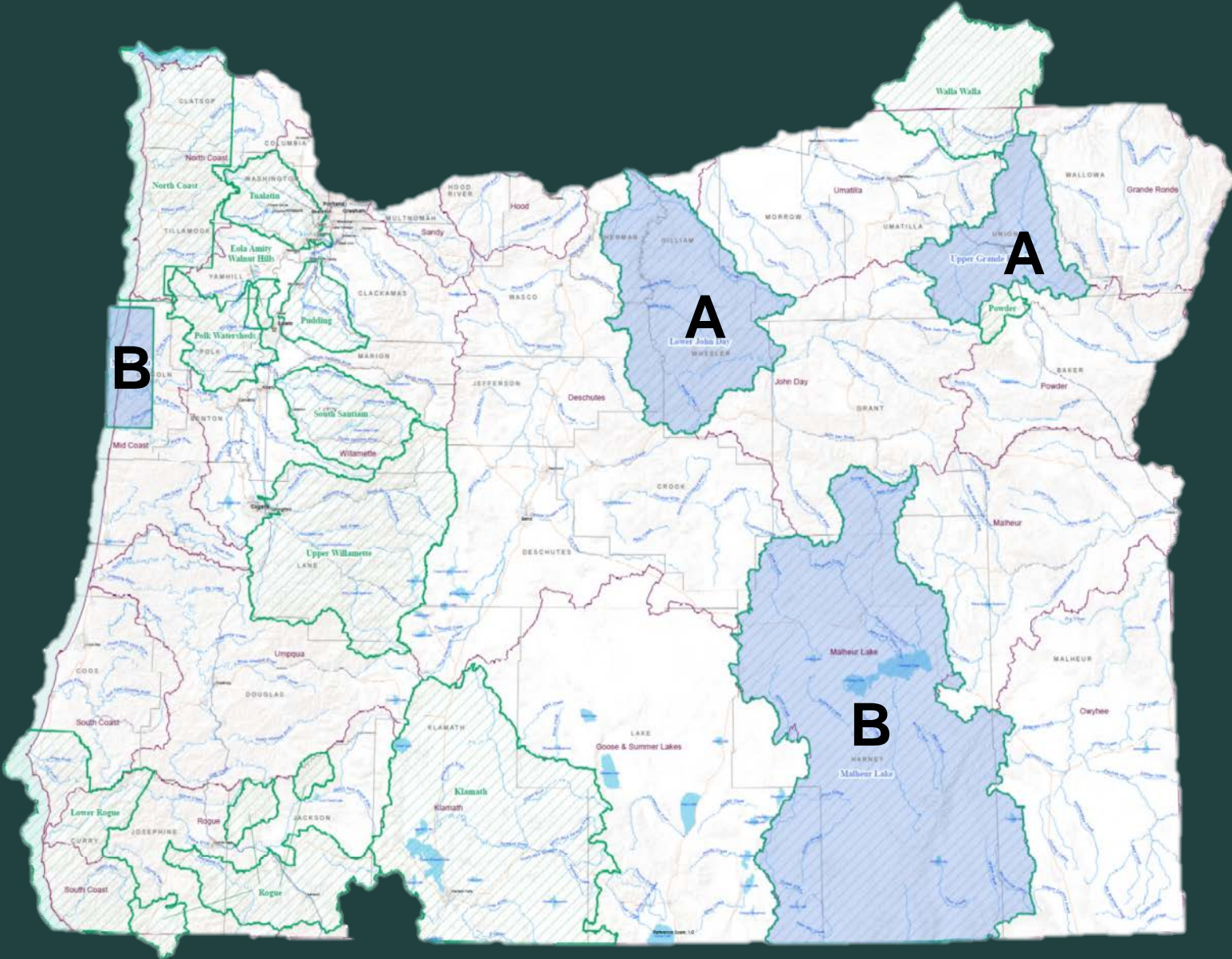
Group B

Group B – Good in all criteria, emerging partnerships, high need, diverse circumstances, interesting opportunities, potential catalyst

- **Malheur Lake**
- **Mid-Coast**
- **Pudding**
- **Rogue**
- **Walla Walla**



Recommended Pilots



Lower John Day

**Convener:
John Day
Partnership**

**Recommend
full funding -
\$190,000**



Existing partnership
and governance
agreement

Integration with OWEB
Planning (Strategic
Action Planning)



Clear link to IWRS
principles – incentives,
science-based
approaches

Upper Grande Ronde

**Convener:
Union County**

**Recommend
full funding -
\$197,000**



Successful
collaboration

Innovative tools and
approaches -
integrated water
model



Coordination with
Regional Solutions



Malheur Lake

**Convener:
Harney County
Watershed
Council**

**Recommend
partial funding -
\$135,000**



Successful
collaboration

Catalyst for
collaborative water
planning



Opportunity to partner
– groundwater study



Mid-Coast

Convener: City of Newport



Transferrable lessons for discrete water systems

OWRD invited to co-convene

Clear local momentum and active stakeholder engagement



Recommend partial funding - \$135,000



Commitment to track progress against established metrics



Variation Among Pilots

Convener | Geography | Scale
Hydrology | Planning History





Summary of Funding Recommendations

Letter of Interest ID	Funding Requested	Funding Recommended
Upper Grande Ronde	\$197,000	\$197,000 (Full)
Lower John Day	\$190,000	\$190,000 (Full)
Mid-Coast	\$330,300	\$135,000 (Partial)
Malheur Lake	\$205,500	\$135,000 (Partial)
Reserve Funding	--	\$93,000
Totals	\$892,500	\$750,000



Funding Level Reasoning

**Group A: Lower John Day
and Upper Grande Ronde**



Build a collaborative & integrated process



Characterize current water resources & identify challenges



Quantify current & future instream & out-of-stream needs



Develop solutions for meeting near-term & long-term needs



Plan approval & implementation

**Group B: Mid-Coast
and Malheur Lake**



Reserve Fund

Reserve fund
(\$93,000)

Support recommended pilots

Assist other places with Planning Step 1

Leverage other funding sources



Public Comments

- Support for each recommended area
- Emphasis on balanced representation of interests
 - Inclusion of interested and affected parties
 - Inclusion of conservation/instream interests
- Planning sideboards
 - Water quality
 - Natural hazards
- Considerations for future planning in the Tualatin and Pudding



Summary of Funding Recommendations

Letter of Interest ID	Funding Requested	Funding Recommended
Upper Grande Ronde	\$197,000	\$197,000 (Full)
Lower John Day	\$190,000	\$190,000 (Full)
Mid-Coast	\$330,300	\$135,000 (Partial)
Malheur Lake	\$205,500	\$135,000 (Partial)
Reserve Funding	--	\$93,000
Totals	\$892,500	\$750,000



Staff Recommendation

The Commission may consider the following alternatives:

- **Adopt funding recommendations.**
- **Adopt modified funding recommendations.**
- **Direct the Department to further evaluate the applications and return with revised funding recommendations.**



Staff Recommendation

The Commission may consider the following alternatives:

- **Adopt funding recommendations.**
- **Adopt modified funding recommendations.**
- **Direct the Department to further evaluate the applications and return with revised funding recommendations.**

THANK YOU

Questions?



EXTRA SLIDES



Pilot Variability

	Lower John Day	Upper Grande Ronde	Malheur Lake	Mid-Coast
Convener	Partnership	County	Watershed Council	City (co-convene with OWRD)
Geography	NC – Canyon lands	NE – Mountain uplands	SE - High desert	NW - Coastal
Scale	HUC 8	HUC 8	Administrative Basin	Series of HUC 10s
Hydrology	Arid, low precipitation, tributary to the Columbia	Snowpack driven, high precipitation, tributary to the Snake	Basin and range, groundwater, closed basin	Coastal, precipitation driven, distributed hydrology
Planning History	Existing collaborative partnership	Past collaborative water planning	Past collaborative planning for land management issues	Recent history of more collaborative approaches