

# OREGON WATER RESOURCES COMMISSION

October 13, 2016



**ROGUE BASIN**  
PARTNERSHIP

# ABOUT US

## VISION

We unite people in restoring the Rogue by strategically investing in the stewardship of our Basin.





# ALIGNING ORGANIZATIONS



**Niche Analysis**



**Increased Local Capacity**



**Building Trust/Common  
Vision**

# COLLECTIVE IMPACT



Common  
Agenda



Common  
Progress  
Measures



Mutually  
Reinforcing  
Activities



Open and  
Continuous  
Communication



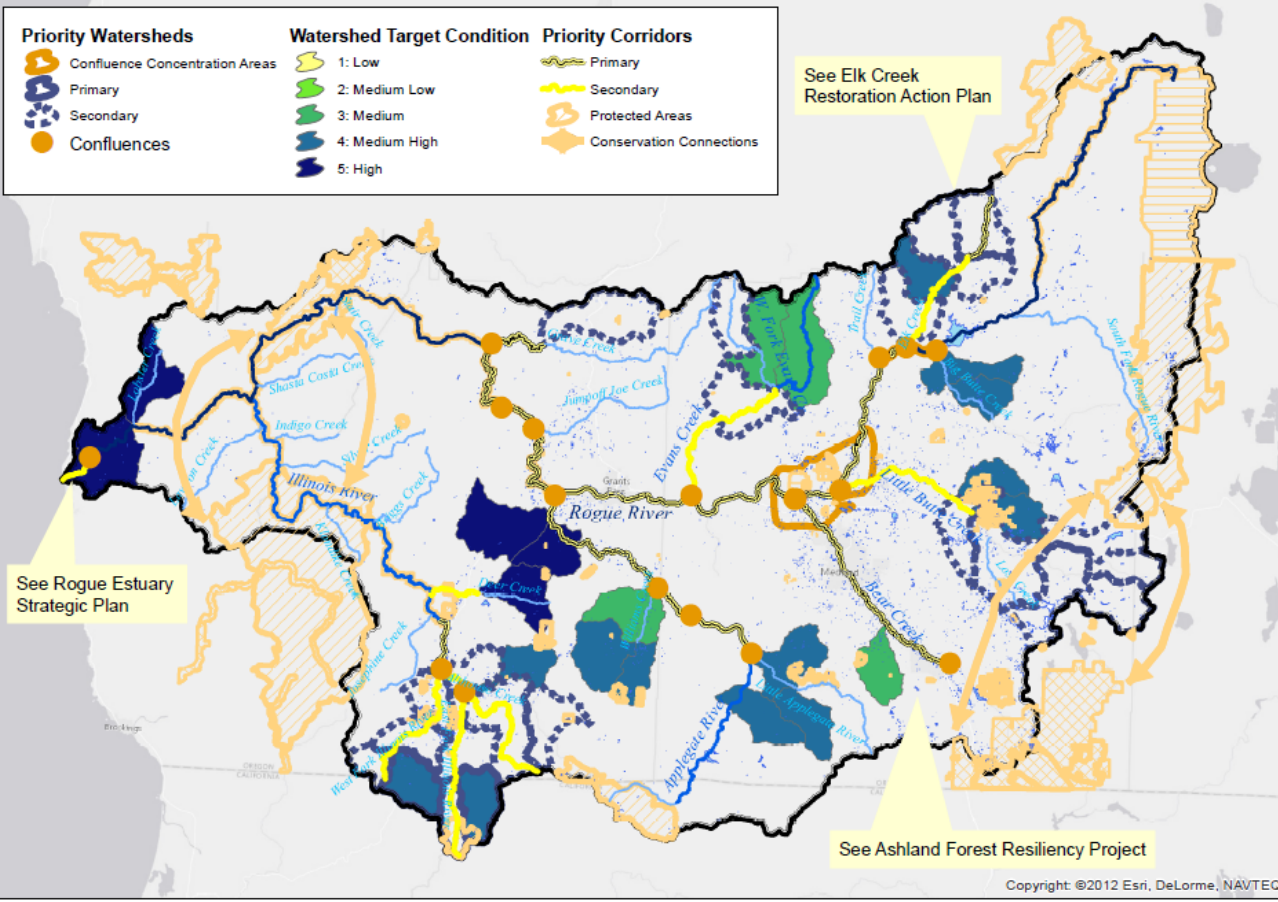


# CREATING A REGIONAL BACKBONE



**Current RBP Members:** Applegate Partnership and Watershed Council, Illinois Valley Watershed Council, Lower Rogue Watershed Council, Seven Basins Watershed Council, Rogue River Watershed Council, Jackson Soil and Water Conservation District, The Freshwater Trust, Cow Creek Band of the Umpqua Tribe of Indians, Lomakatsi, Medford Water Commission, Rogue Riverkeeper, Rogue Valley Council of Governments, Southern Oregon Forest Restoration Collaborative, Southern Oregon Land Conservancy, Trout Unlimited, WaterWatch of Oregon, Southern Oregon Climate Action Now

# PLANNING OUR FUTURE



## Rogue Restoration Action Plan



Rogue Basin Partnership  
 October 2015  
 Version 1.0

Produced a Climate Informed Rogue Restoration Action Plan



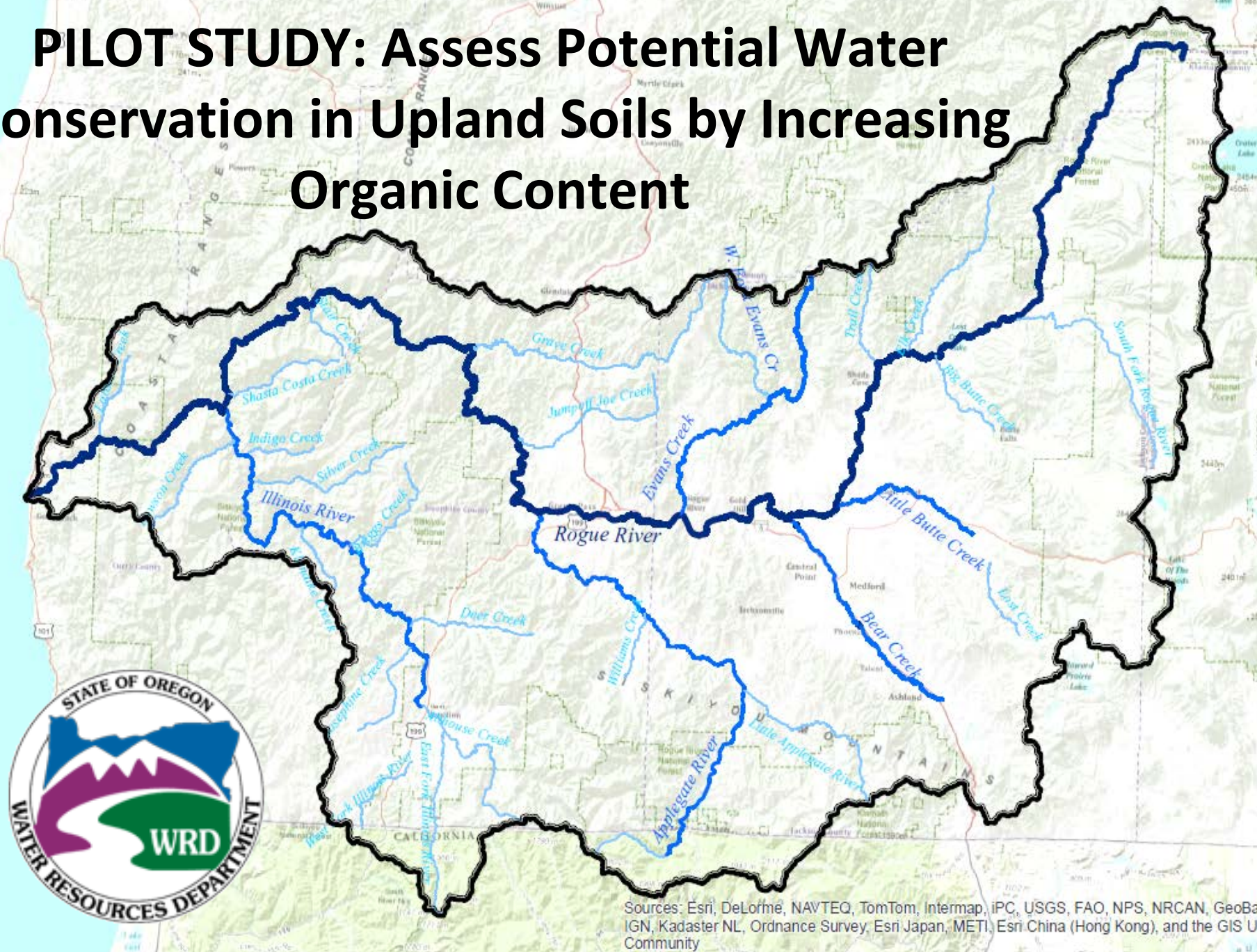
# IMPLEMENTING ACTIONS



“The Rogue River Basin remains resilient and supports viable populations of native fish and wildlife. Ecological processes, as well as social and economic benefits, are conserved and enhanced through collaborative, coordinated efforts of willing stakeholders.”



# PILOT STUDY: Assess Potential Water Conservation in Upland Soils by Increasing Organic Content



Sources: Esri, DeLorme, NAVTEQ, TomTom, Intermap, iPC, USGS, FAO, NPS, NRCAN, GeoBase, IGN, Kadaster NL, Ordnance Survey, Esri Japan, METI, Esri China (Hong Kong), and the GIS User Community



# PILOT STUDY CONCEPT

- Detain Precipitation in Wet Season
- Reduce Runoff
- Increase Recharge
- Increase Summer Baseflow

*This **Pilot Study** will determine the feasibility of the concept of reducing runoff and increasing infiltration by adding organic material and other amendments to the shallow soils on two types of rural land: timberland and oak savannah. We will assess what forms of mulch (composition, particle size, etc) are most effective at increasing water infiltration into the ground. The study will also help determine if the initial changes to the soil horizon will be self-sustaining for the long term. Results from the Pilot Study will help make decisions on potential next steps, if any, to consideration of the concept on a larger scale.*

# RBP Instream Flow Working Group



- Meeting for 1 year
- Members include: Trout Unlimited (lead), Rogue River WC, Applegate Partnership and WC, WaterWatch of Oregon, The Freshwater Trust, Cow Creek Tribe, and occasionally other RBP Members
- Hosting coordinated meetings with Instream Habitat Working Group since these groups have many overlapping projects



# RBP Instream Flow Working Group (cont.)

- Secured funding from OWEB, NFWF, LNFF to complete Feasibility and Prioritization Assessment for instream flow restoration in the basin.
- Developed an interactive model that is being reviewed by a technical team to prioritize efforts in the stream reaches with greatest ecologic value, and most feasibility for completing water right transfers based on the conditions of water rights and land use/ownership.
- The Technical Review team for the model includes OWRD, ODFW, BLM, NMFS, OR DEQ, and Rogue River Watershed Council. Additional coordination is on-going with the Soil and Water Conservation District.

<https://public.tableau.com/profile/publish/RogueRiverRestoration/Dashboard1#!/publish>

File Edit View Favorites Tools Help  
 x Convert Select  
 RogueRiverRestoration - S... Suggested Sites TU Staff Directory List Trout ... TU Intranet - Home Web Slice Gallery abouttabs

tableau:public GALLERY AUTHORS BLOG RESOURCES ACTIVITY SIGN IN  
 Sean McFall - Profile Download Workbook

Majority Land Owner  
 Federal  
 Private

© OpenStreetMap contributors

undo redo reset 65 views | more by this author

### Species Information

Coho Presence <input checked="" type="checkbox"/> Not Present <input checked="" type="checkbox"/> Present	Fall Chinook Presence <input checked="" type="checkbox"/> Not Present <input checked="" type="checkbox"/> Present	Win. Steelhead Presence <input checked="" type="checkbox"/> Not Present <input checked="" type="checkbox"/> Present
Sum. Steelhead Presence <input checked="" type="checkbox"/> Not Present <input checked="" type="checkbox"/> Present	Lamprey Presence <input checked="" type="checkbox"/> Not Present <input checked="" type="checkbox"/> Present	
Coho Intrinsic Potential 0.0000	Chinook Intrinsic Potential 0.7900	Steelhead Intrinsic Potential 0.0000
Miles of Coho IP >.5 0.00	Miles of Chinook IP >.5 46.83	Miles of Steelhead IP >.5 0.00
# Coho High IP, Short Reaches 0	# Chinook High IP, Short Reac... 191	# Steelhead High IP, Short Rea... 0

### Land Information

% Private Land 0.00	Number of Private Acres 96.00	Number of Large (>100 acres) POU-Overlapping Farm-Based Tax Lots 31782
------------------------	----------------------------------	---

### Climate/Aquatic Information

Number of Water Rights * 1	NorWEST Average Current Stream Temperature 8.11	Number of ODFW Priority Barriers 19.34
Average ODFW Aquatic Crucial Habitat Score 1.050	NorWEST Average Stream Temperature, Current vs. 2040 Projection Difference 3.420	2.6500

Rogue River Restoration

RogueRiverRestoration

75%

**Link to view:**

<https://public.tableau.com/profile/publish/RogueRiverRestoration/Dashboard1#!/publish-confirm>



# RBP Instream Flow Working Group (cont.)

- **Current Status**

Completing work now on the valuation of water rights in the basin for transactions, and outreach to landowners and water users in priority reaches to complete pilot transactions for the program. The first instream lease for the program will be approved by OWRD within the next few days, with additional applications under development this year.



**THANK YOU!**



**ROGUE BASIN**  
PARTNERSHIP