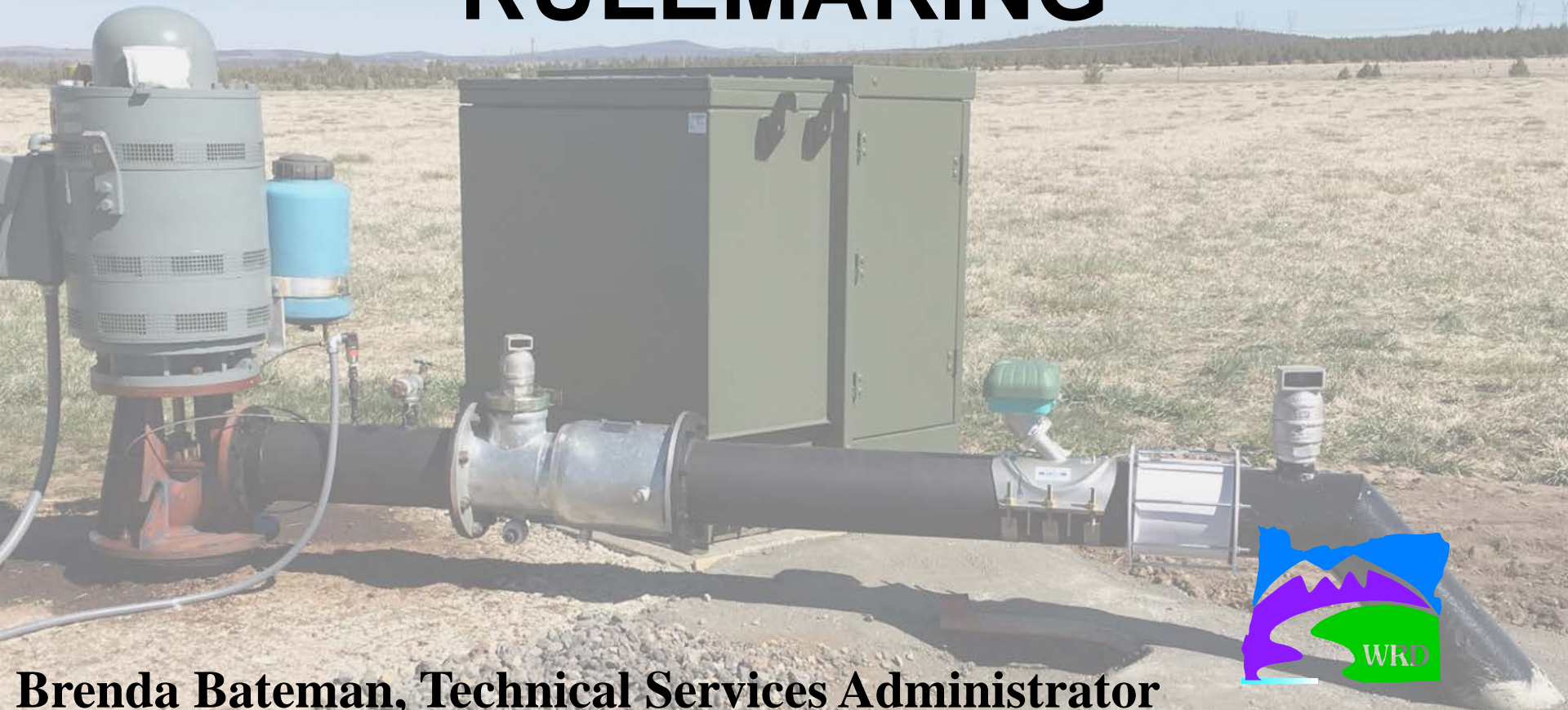


# **AGENDA ITEM G**

## **UPDATE ON DIVISION 215**

### **RULEMAKING**



**Brenda Bateman, Technical Services Administrator**  
**Kristopher Byrd, Well Construction & Compliance Section Manager**

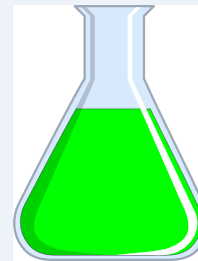
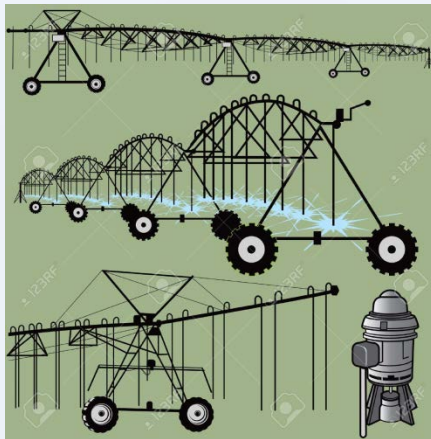
# **Back-Siphon Prevention Device**

**Safety device that prevents water or other fluids from flowing in the opposite direction of that intended.**

# Back-Siphon Prevention Device

**Currently required if:**

- **Irrigation system connected to GW source; and**
- **Fertilizers or chemicals applied through the system.**



**OR**



# Statutory Authority

**ORS 537.780(1)(b)(A) provides that WRC may enforce:**

- **General standards for the construction/maintenance of wells;**
- **Casings, fittings, valves, pumps; and**
- ***Back-siphoning prevention devices.***

# Back-Siphon Standards

- **Oregon Water Resources**
  - Groundwater Irrigation Wells
- **Oregon Health Authority**
  - Public Water Systems
- **Oregon Building Codes Division (Plumbing Codes)**
  - Public Water Systems
  - Private Water Systems

# Back-Siphon Standards

- **Oregon Water Resources**
  - Groundwater Irrigation Wells
- Oregon Health Authority
  - Public Water Systems
- Oregon Building Codes Division (Plumbing Codes)
  - Public Water Systems
  - Private Water Systems

# OREGON



1:850,000

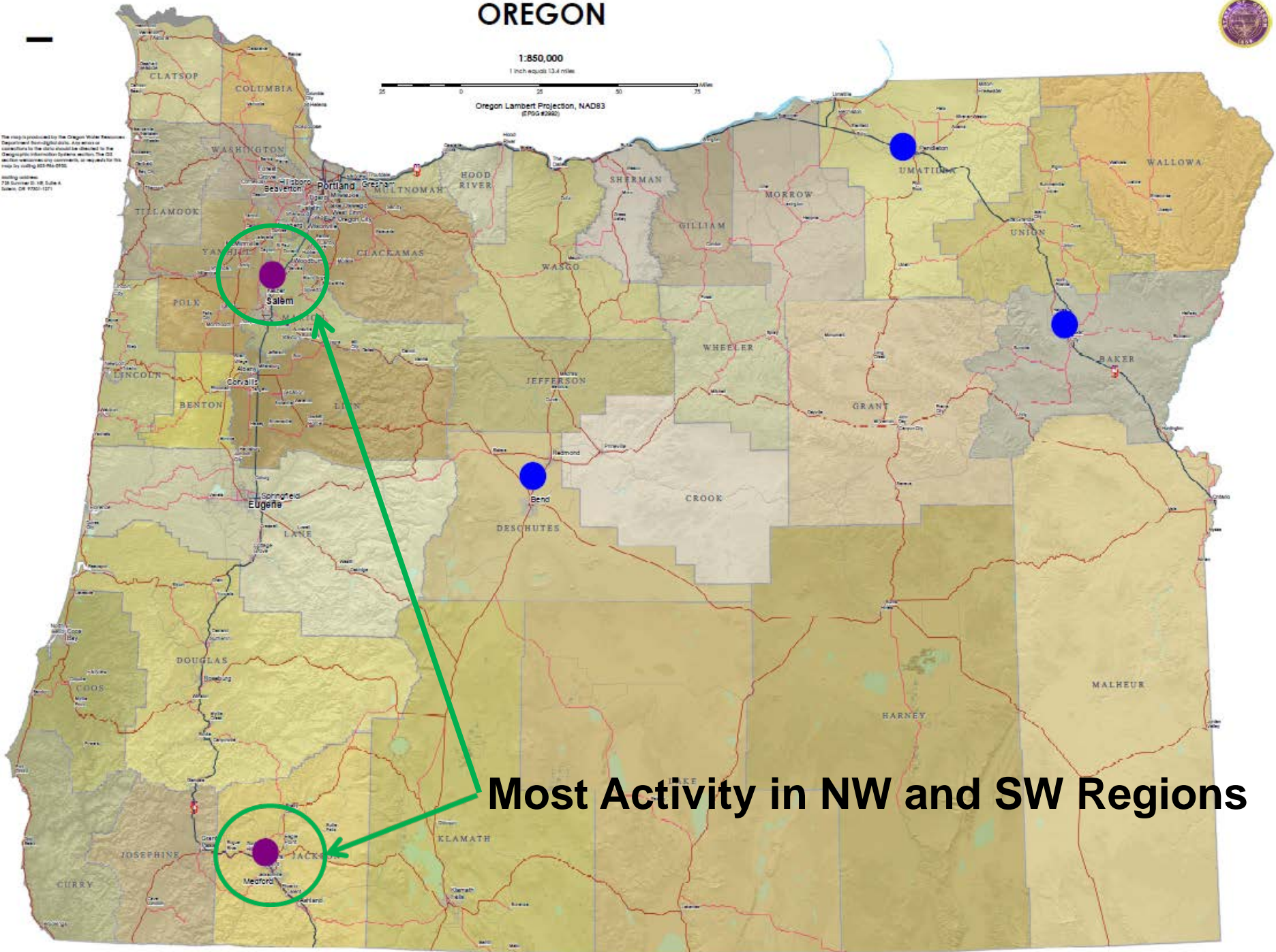
1 inch equals 13.4 miles



Oregon Lambert Projection, NAD83  
(EPSG:4960)

The map is produced by the Oregon Water Resources Department. It is a digital map. Any errors or omissions in the data should be checked by the Geographic Information Systems section. The OSW does not warrant any accuracy or reliability for the map by using GIS data.

Printing address:  
726 Commercial St., Suite 4  
Salem, OR 97301-1271



**Most Activity in NW and SW Regions**









15121421

Best Deal  
100%

SOIL-TAR9

CAUTION

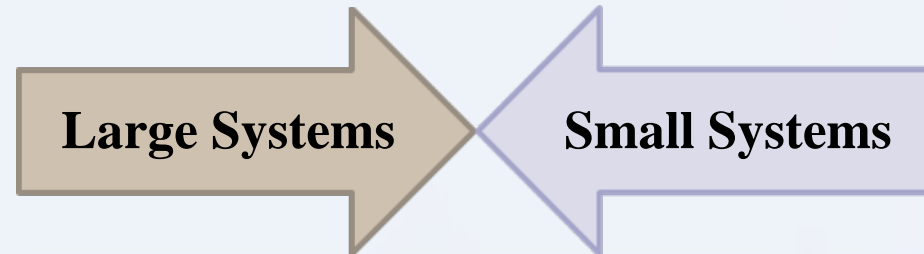
100%

# Current Rules

**OAR 690-215-0017 – Effective starting 1991.  
Focused on traditional irrigation systems.**

## **Standard Components**

- **Automatic low-pressure drain**
- **Inspection port**
- **Irrigation line check valve**
- **Air /vacuum relief valve**
- **Chemical injection line check valve**
- **System interlock.**

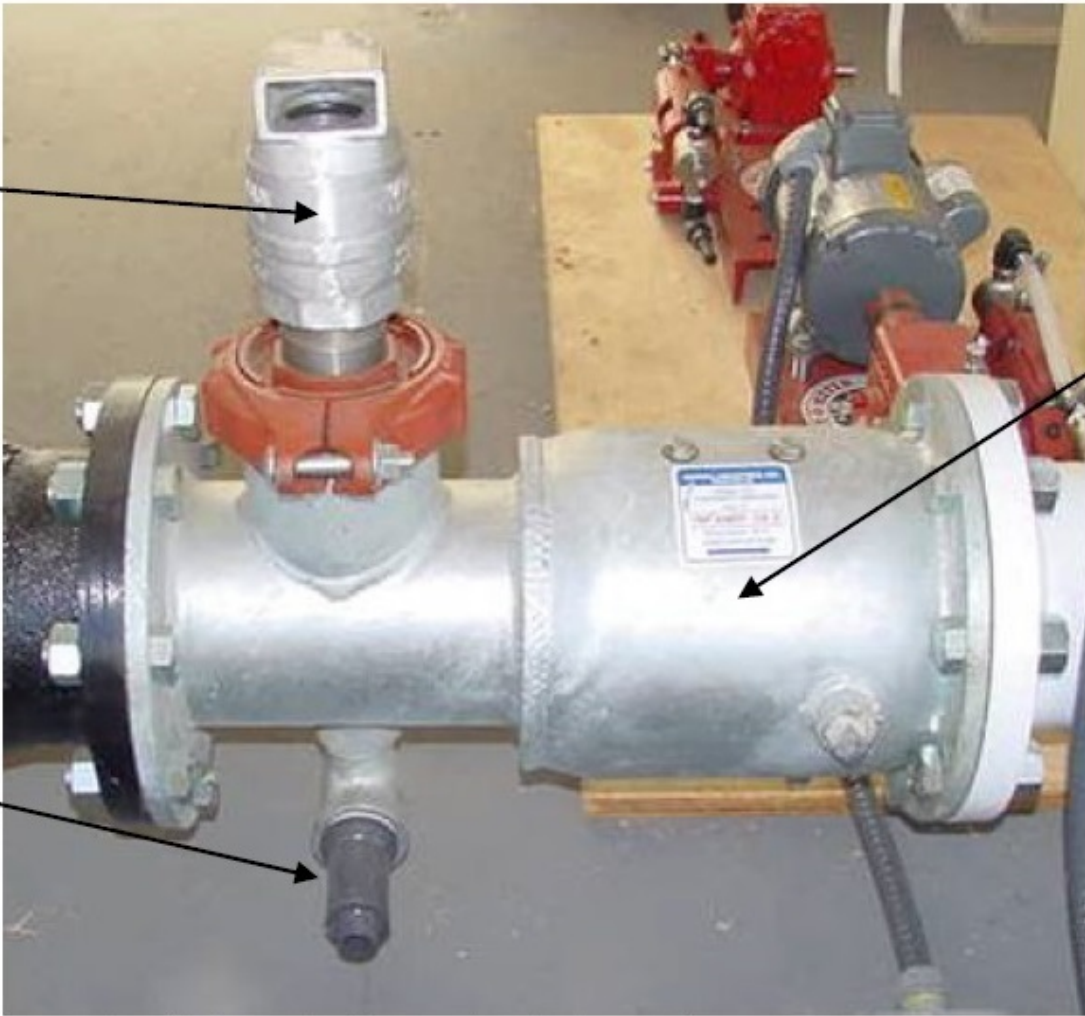


# Federal Standards

- **Rules are in addition to pesticide application requirements under Federal Insecticide, Fungicide and Rodenticide Act (FIFRA).**
- **Not intended to replace FIFRA.**

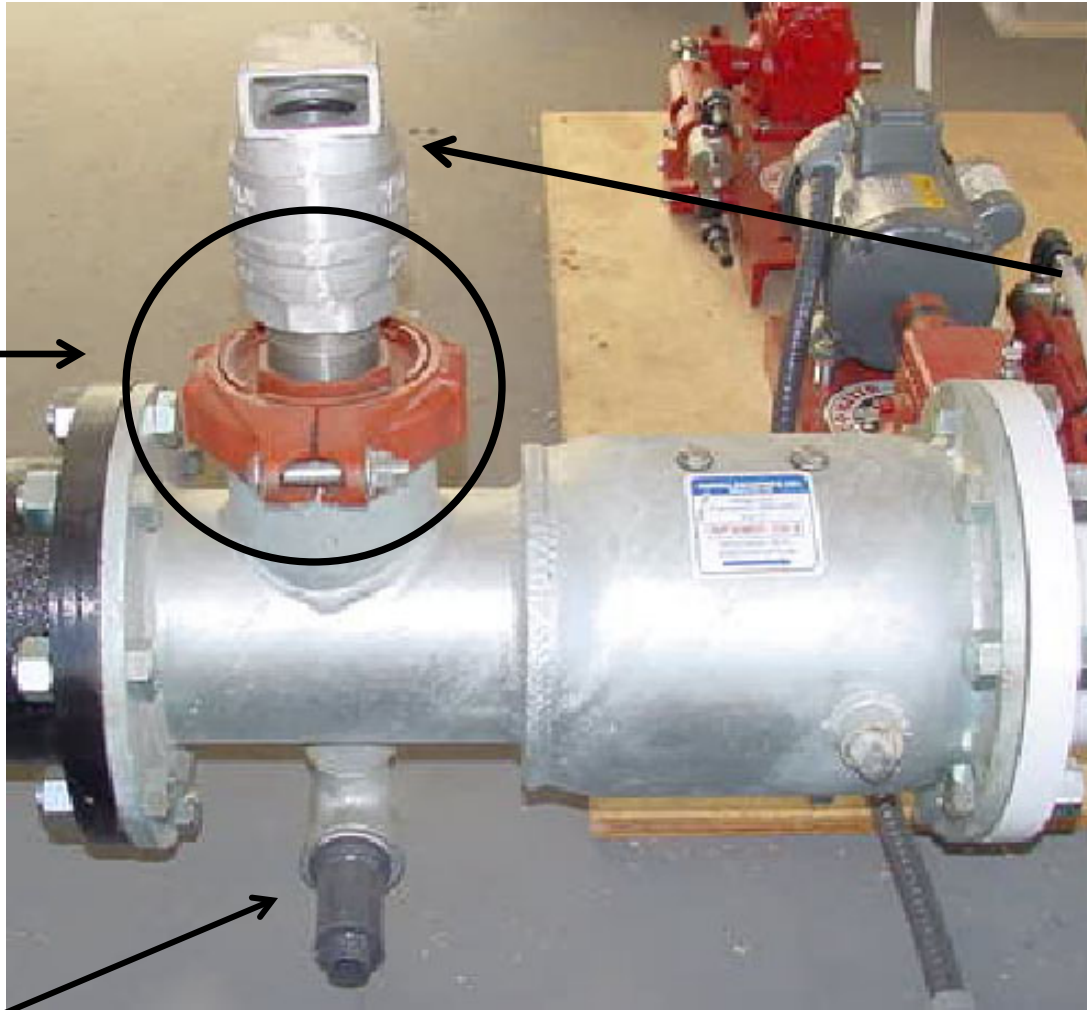


Vacuum  
Relief  
Valve



Check  
Valve

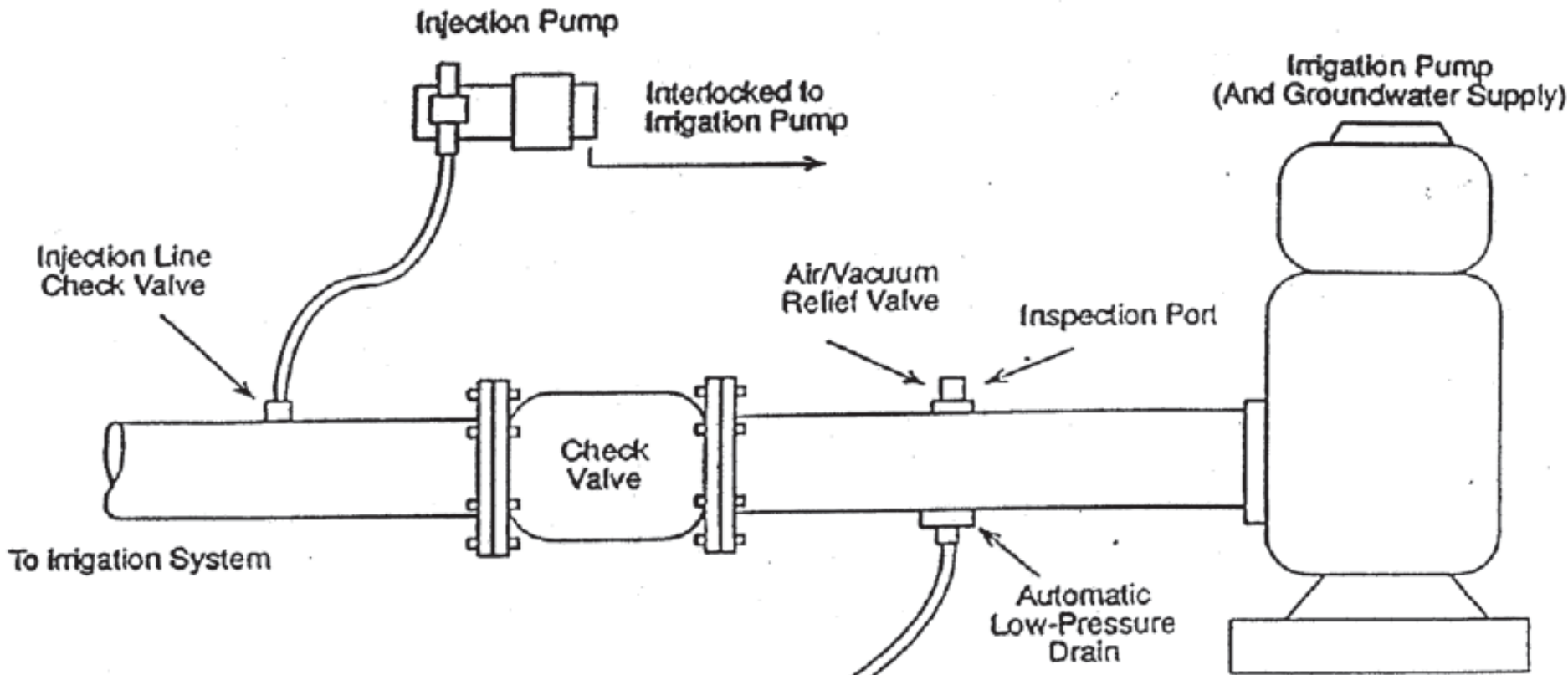
Low  
Pressure  
Drain  
Valve



**Inspection port must be a minimum diameter of four inches.**

**Air/vacuum relief valve. Smallest diameter in rule is  $\frac{3}{4}$  inch for a four inch pipe.**

**Minimum  $\frac{3}{4}$  inch diameter low pressure drain.**



- Discharge solution a minimum of 20 feet and down-slope from well
- Maintain an Air gap between end of discharge pipe and the discharged solution

# RAC Goals

- **Discuss problem**
- **Review existing rule**
- **Develop standards to work on all systems**
- **Option for alternatives**
- **Consider landowner concerns**



# Invited to Participate

- **BMI Backflow**
- **Sippel Water Care**
- **Oregonians for Food and Shelter**
- **Oregon Farm Bureau**
- **ODA – Pesticides Program**
- **OHA – Drinking Water Services**
- **Oregon Irrigator - Oregrown**
- **Nature Conservancy**

# Invited to Participate

- **BMI Backflow**
- **Sippel Water Care**
- Oregonians for Food and Shelter
- Oregon Farm Bureau
- ODA – Pesticides Program
- **OHA – Drinking Water Services**
- **Oregon Irrigator - Oregrown**
- **Nature Conservancy**

# Proposed Rules

- **Definitions**
- **Testing**
- **Corrections and clarifications**
- **Add device**
- **Add figure**
- **Alternatives**
- **Bypass requirements**
- **Clarify authority**
- **OHA/DCBS requirements**

# Public Comment

- **Two meetings – March 28 and April 11**
- **Public comment period - May 1 to May 31**
- **Discuss with GWAC**
- **Public hearing - May 24**
- **Review comments**
- **Return to Commission in August**

# Questions

