



2017 Update

Integrated Water Resources Strategy



Water Resources Commission Meeting
January 26-27, 2017
Agenda Item B

AUGUST 2012

Outline of Today's Agenda Item



- Background on the update process
- Overview of the 2016 Policy Advisory Group (PAG)
- Share the PAG's perspectives and recommendations
- Timeline and next steps for the 2017 IWRS

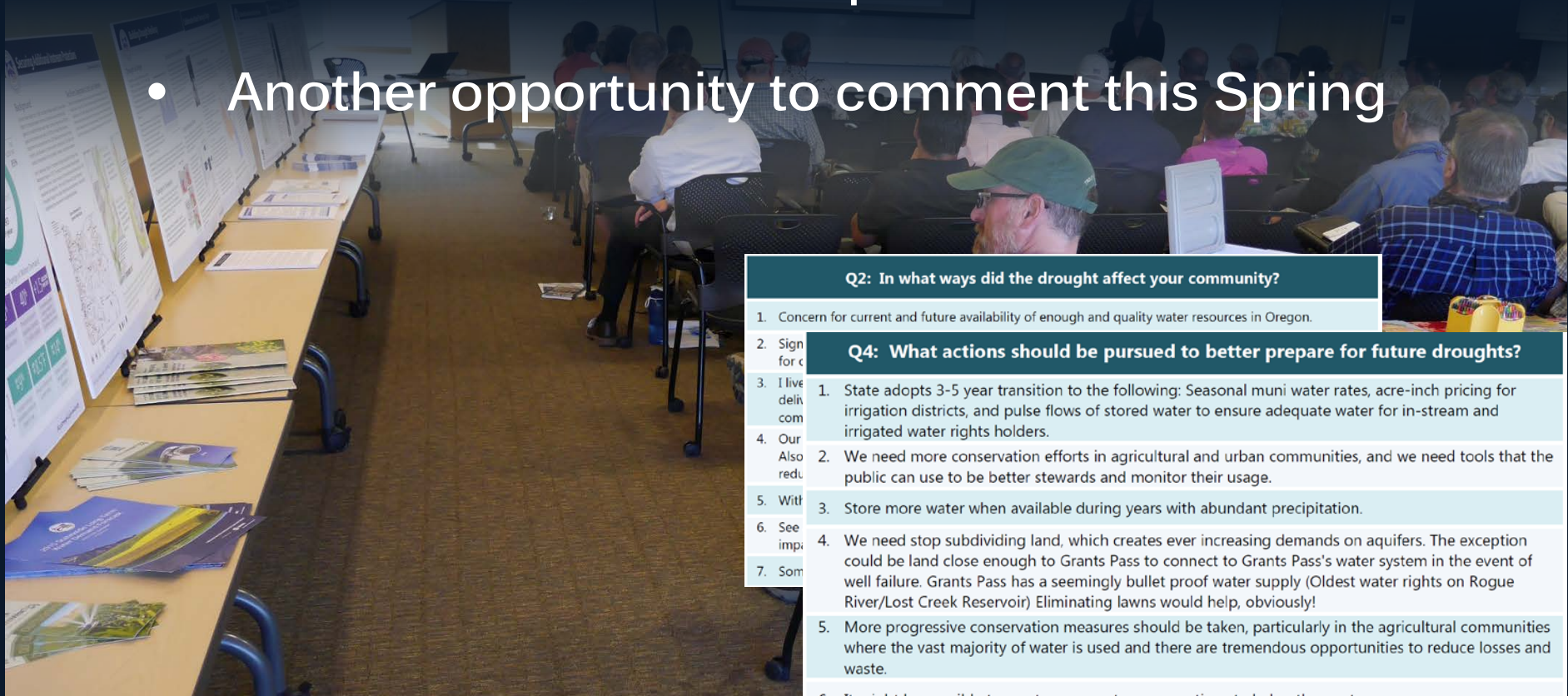
Background – The Update Process



- IWRS must be updated every five years
- Other boards and commissions must be notified
- This update has been designed to focus on shoring up existing recommended actions or adding new ones
- Governor Brown directed the agency to address drought
- Department continues to work closely with key partner agencies

Background – The Update Process

- Open houses held last year
- Online survey and written comments accepted
- Comments shared and posted online
- Another opportunity to comment this Spring



Q2: In what ways did the drought affect your community?

1. Concern for current and future availability of enough and quality water resources in Oregon.

2. Sign for c

3. I live deliv com

4. Our Also redu

5. With

6. See imp

7. Som

Q4: What actions should be pursued to better prepare for future droughts?

1. State adopts 3-5 year transition to the following: Seasonal muni water rates, acre-inch pricing for irrigation districts, and pulse flows of stored water to ensure adequate water for in-stream and irrigated water rights holders.

2. We need more conservation efforts in agricultural and urban communities, and we need tools that the public can use to be better stewards and monitor their usage.

3. Store more water when available during years with abundant precipitation.

4. We need stop subdividing land, which creates ever increasing demands on aquifers. The exception could be land close enough to Grants Pass to connect to Grants Pass's water system in the event of well failure. Grants Pass has a seemingly bullet proof water supply (Oldest water rights on Rogue River/Lost Creek Reservoir) Eliminating lawns would help, obviously!

5. More progressive conservation measures should be taken, particularly in the agricultural communities where the vast majority of water is used and there are tremendous opportunities to reduce losses and waste.

6. It might be possible to create cross system connections to help other systems

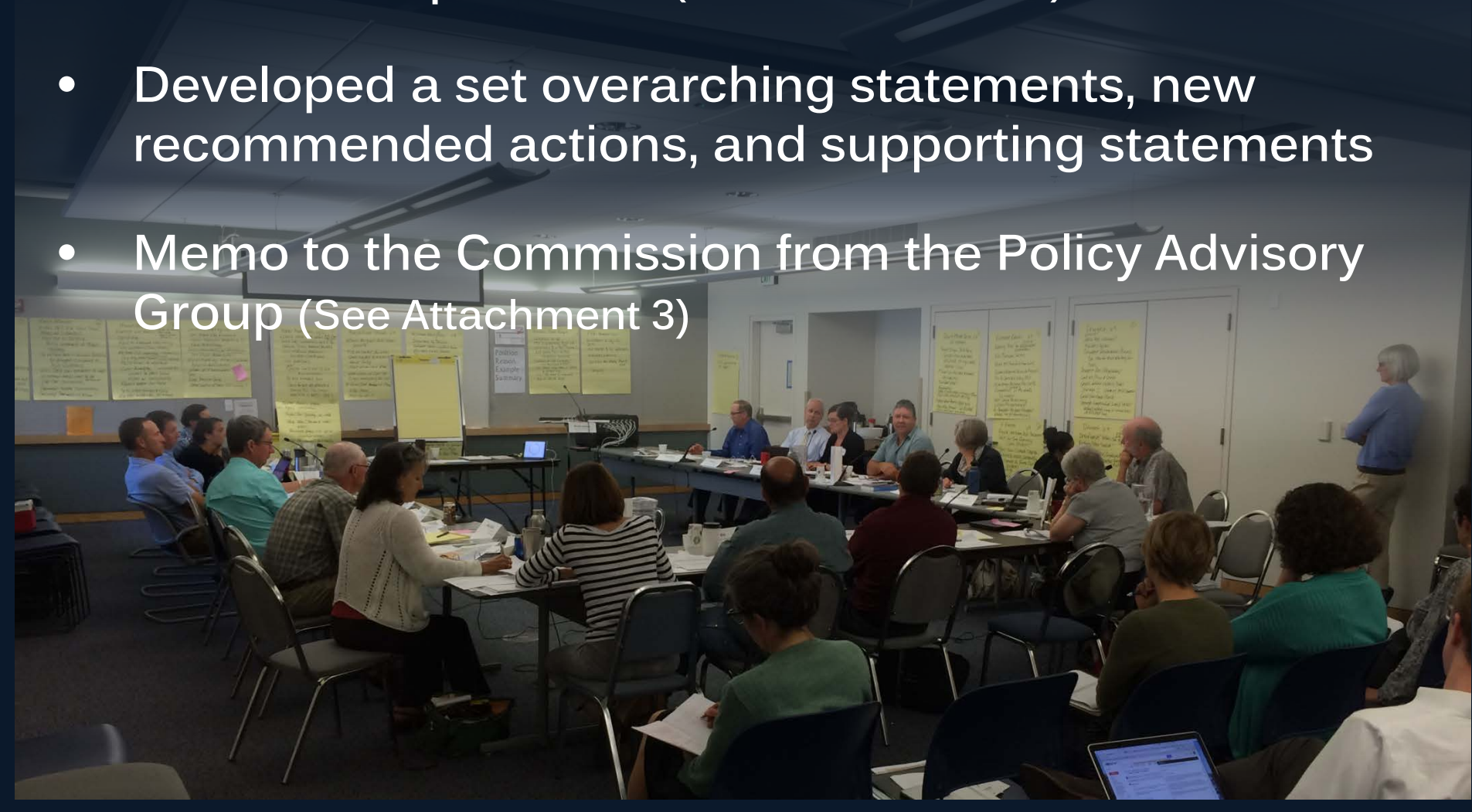
The 2016 Policy Advisory Group

- Convened in 2016 to support the update process
- An advisory body to the Department and Commission
- Meetings open to the public, materials posted online
- A final two-day meeting was held in early December (See Attachment 1)



The 2016 Policy Advisory Group

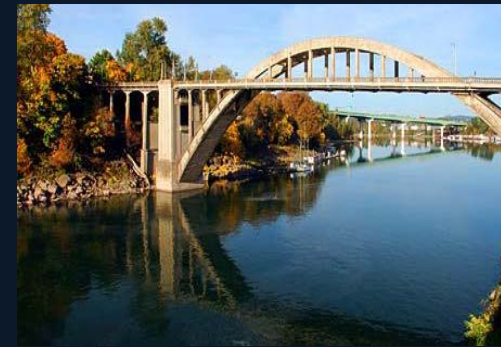
- PAG used a consensus approach, following a set of established protocols (See Attachment 2)
- Developed a set overarching statements, new recommended actions, and supporting statements
- Memo to the Commission from the Policy Advisory Group (See Attachment 3)



Perspectives and Recommendations

Over-Arching Statement

Water is a finite resource with growing demands; water scarcity is a reality in Oregon. Water-related decisions should rest on a thorough analysis of supply, analysis of demand / need for water, the potential for increasing efficiencies and conservation, and alternative ways to meet these demands.



Perspectives and Recommendations

Six New Recommended Actions


1. Prepare for Extreme Events (related to water)
2. Ensure the Necessary Data, Vulnerability Assessments, and Documentation of Impacts to Better Prepare for, Respond to, and Mitigate Water Scarcity
3. Ensure Public Safety
4. Provide Adequate Field Presence in IWRS Agencies
5. Provide Adequate Permitting Staff in IWRS Agencies
6. Develop a Long-Term Plan for Sustainable Groundwater Management with Clear Objectives and Metrics

Perspectives and Recommendations


Supporting Statements



1. The Policy Advisory Group calls for integrated solutions for building drought resiliency



2. The Policy Advisory Group acknowledges the hard work of the Drought Task Force and has incorporated many aspects of the Task Force report into its own thinking



Perspectives and Recommendations

Support for Drought Task Force Recommendations:

A. The State should continue to increase and enrich water-related data collection to inform water use decisions, conservation, and management, as well as better anticipate and respond to drought.

B. Provide resources for assessments of drought impacts, risks, and vulnerabilities on instream and out-of-stream sectors in order to better prepare for, respond to, and recover from drought.



Perspectives and Recommendations

Support for Drought Task Force Recommendations (continued):

E. Provide OWRD with staff resources to do outreach and communication. Develop communication tool box to educate all sectors and elected officials about existing tools, water conservation, drought conditions and preparedness, and help small communities respond to drought.

G. Provide funding for additional watermaster staff and tools to make water distribution more efficient.

L. The Legislature should consider additional programs to facilitate restoration of streamflows through voluntary means during times of drought.



Perspectives and Recommendations

Support for Existing Recommended Actions:

Data & Measurement:

- Improve agency capacity to collect and analyze data.
- Improve data availability using emerging technologies.
- Improve coordination of data sets.

Water & Land-Use:

- Improve coordination and provide technical guidance, resources, and assistance to local governments for land-use permitting decisions with regard to water.

Water & Wastewater Infrastructure:

- Develop funding and technical support for low income and small communities to maintain and operate water and wastewater-related infrastructure.
- Advocate for federal funding for water and wastewater infrastructure and resiliency.



Perspectives and Recommendations

Support for Existing Recommended Actions

Water-Use Efficiency & Conservation:

- Establish a water-use efficiency and conservation program that provides technical assistance to water users in all sectors.

Built & Natural Storage:

- Investigate and consider non-traditional projects, such as small-to-medium size projects, locations off-channel or underground, and stored water used for both instream and out-of-stream purposes.

Climate Change:

- Understand the effects of climate change on streamflow.



Perspectives and Recommendations



- Although many supported, not all items reached consensus
- Refer to Appendix B of Attachment 3
- A summary of reasons are provided
- Additional discussion and viewpoints shared via email, see Attachment 4
- Other opportunities to weigh in

Timeline and Next Steps



- Project Team staff are making revisions to IWRS
- Plan to release a public review draft in February or early March
- Need to notify other boards and commissions in early Spring (April-May)
- Staff will provide another update in May
- Staff anticipates presenting the Commission with a draft IWRS for adoption in August 2017



Any Questions?