



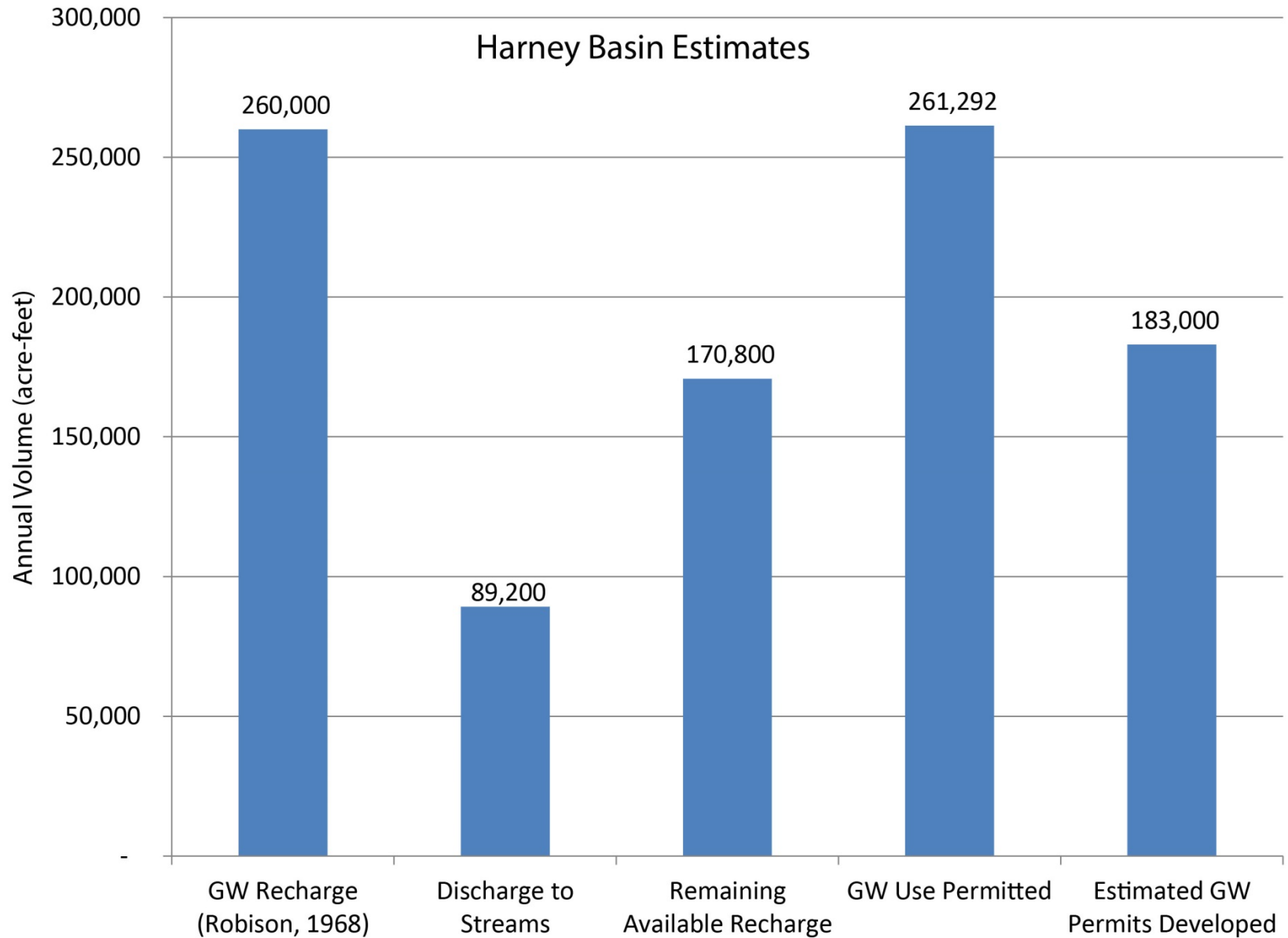
# Place-Based Water Planning Harney Basin, Oregon

# Closed-lake Basin





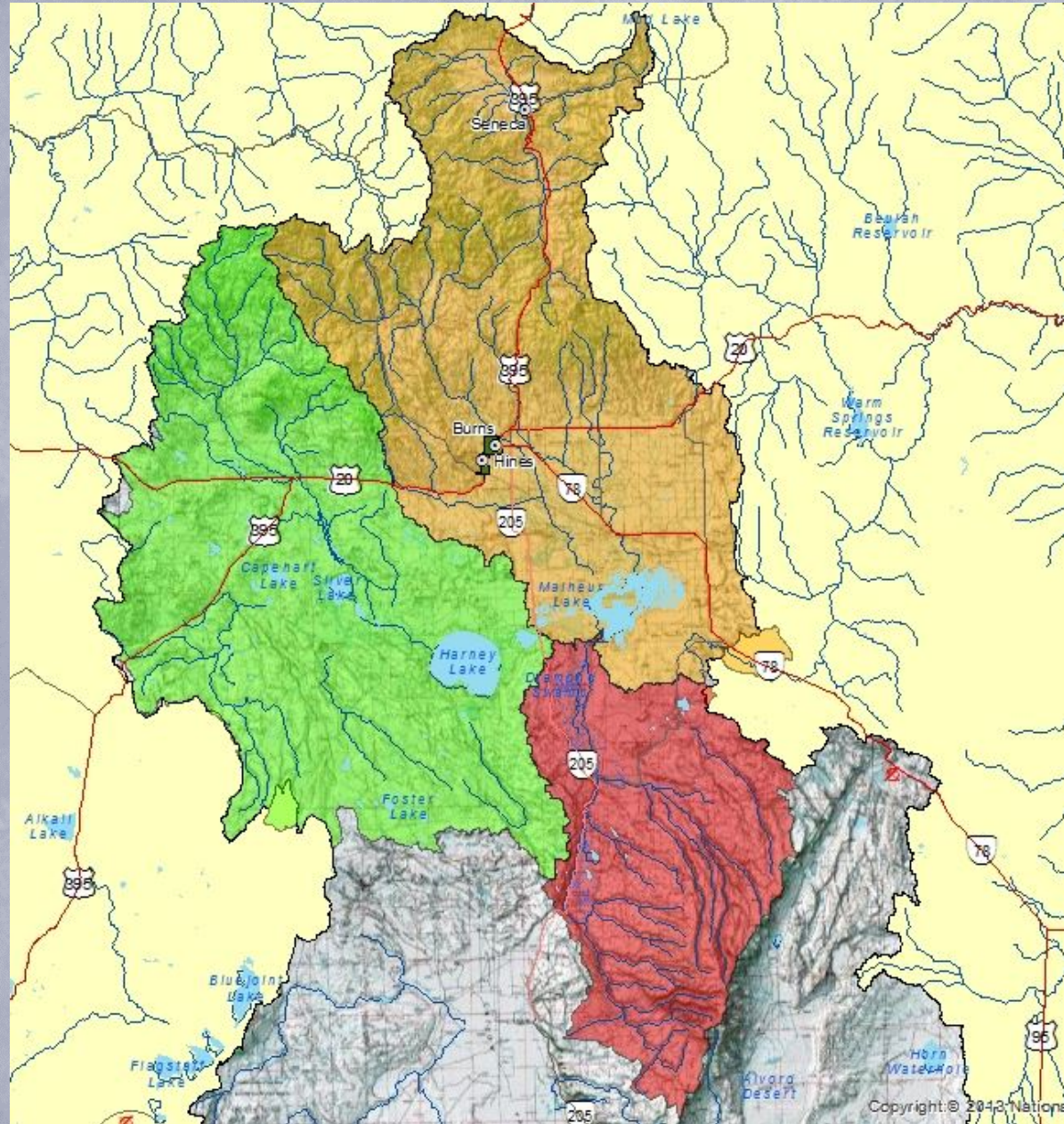
# Water budget situation in Harney Basin







# 3 Main Surface Water Drainages in the Basin





# Place-based Planning

## Harney Basin Community-Based Water Planning Program Schedule

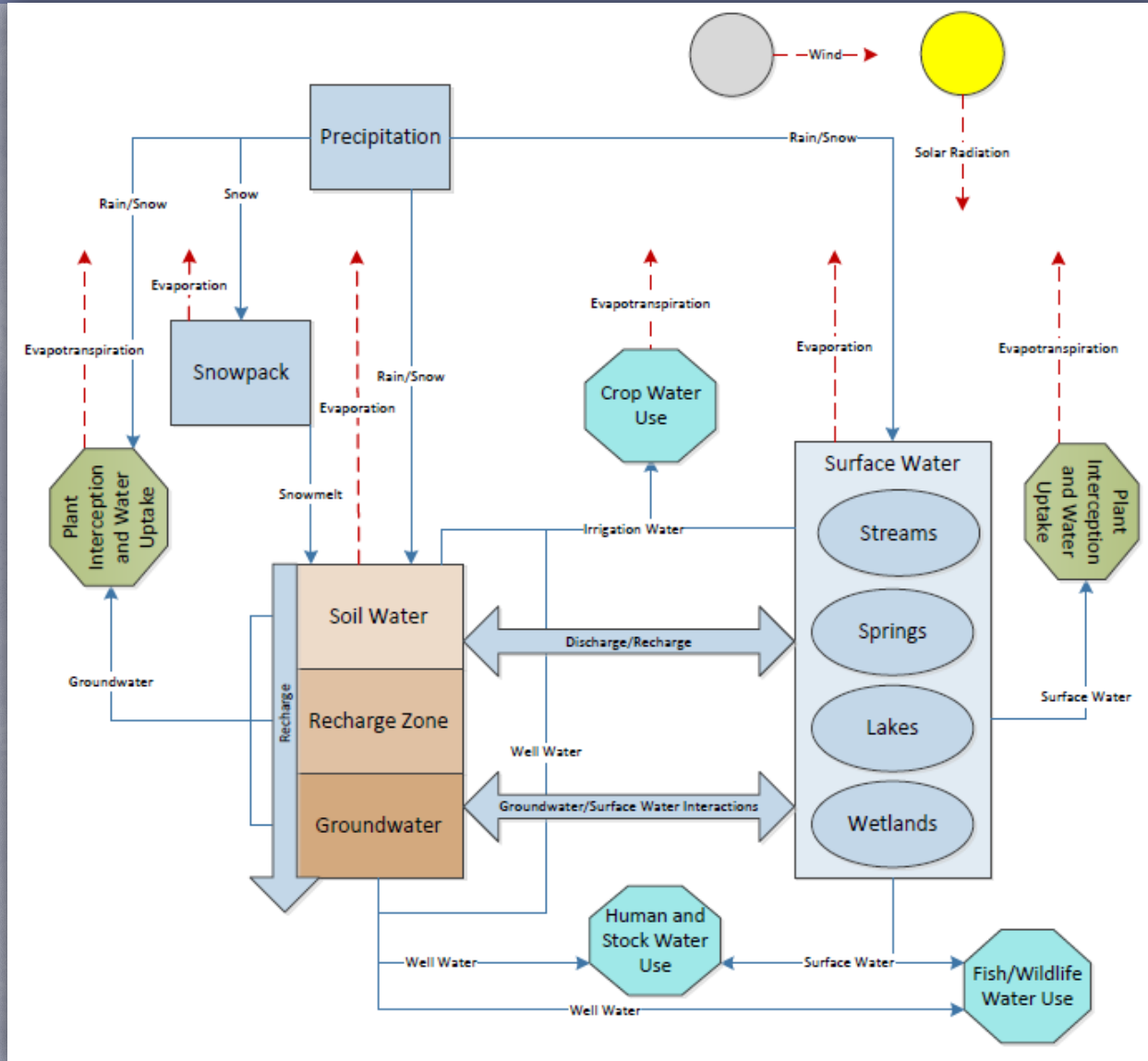


# Accomplishments

- Building a collaborative
- Shared understanding of our system
- Shared understanding of areas we can impact

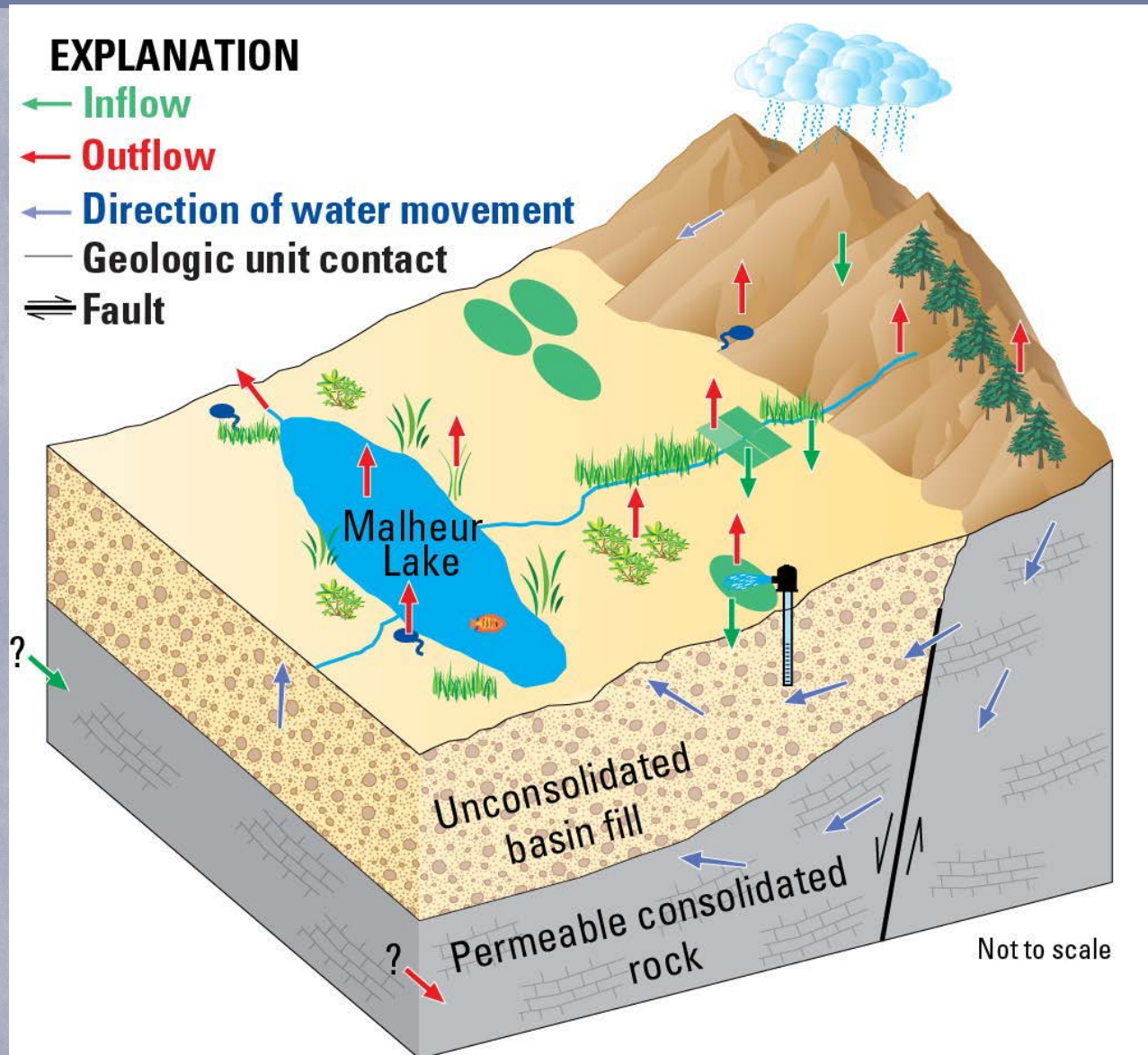


# Shared Understanding with a Conceptual Model





# Water Budget





# Areas of Impact or Focus

- Agriculture Use
- Vegetation Management
- Domestic / Municipal
- Storage / Aquifer Recharge
- Ecological / Surface Water







The Work Groups follow a process to learn, deliberate, and develop proposals to the Full Collaborative which are intended to meet the overall vision of a *sustainably managed supply of quality water for people, the economy and the environment.*

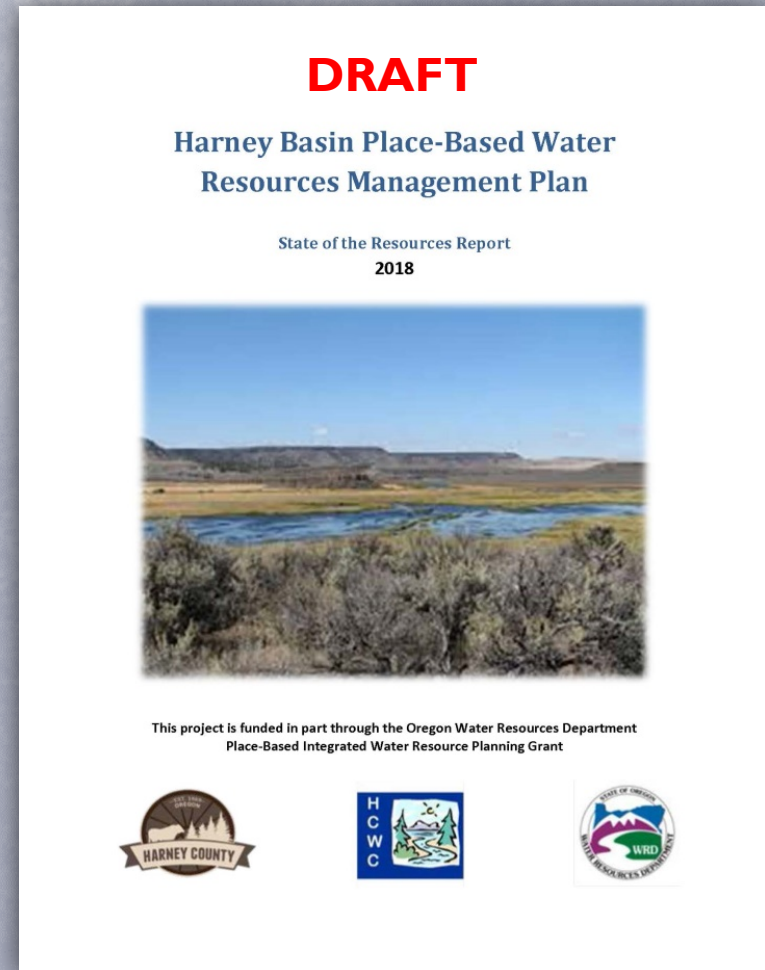


- 1) Gather information to better understand the water subject as it relates to the overall Water Cycle Conceptual Model**
- 2) Characterize historic and current conditions of the subject, including patterns and trends over time**
- 3) Frame the issue informed by (1) and (2), which will be shared in a report to the Collaborative**
- 4) Determine if there are data gaps or management solutions which if addressed would support the vision**
- 5) Develop ideas into a proposal for review and approval by the broader Collaborative**



# Products

- Harney Basin Water Resource Status Report (Draft)
- Domestic and Municipal Water Use and Needs Work Group Reports
- Irrigation Technology Water Conservation Report
- Agricultural Water Savings Program Potentials
- Important Ecological Resources List Draft



# Lessons Learned

- Data gaps are a concern
- We are building community through water planning
- Need for a social economic analysis of water in our basin
- All voices want to be heard at the same time



# Opportunities

- Community awareness and ownership of our water future
- Avoid litigation in our water constrained environment
- Creative solution for a complex issues
- Volunteer measuring and reporting of water use

# Concerns

- Will our plan have weight with the State?
- Do we need to address
- Place-based implementation at a legislative level?
- How will we continue to fund planning and implementation