

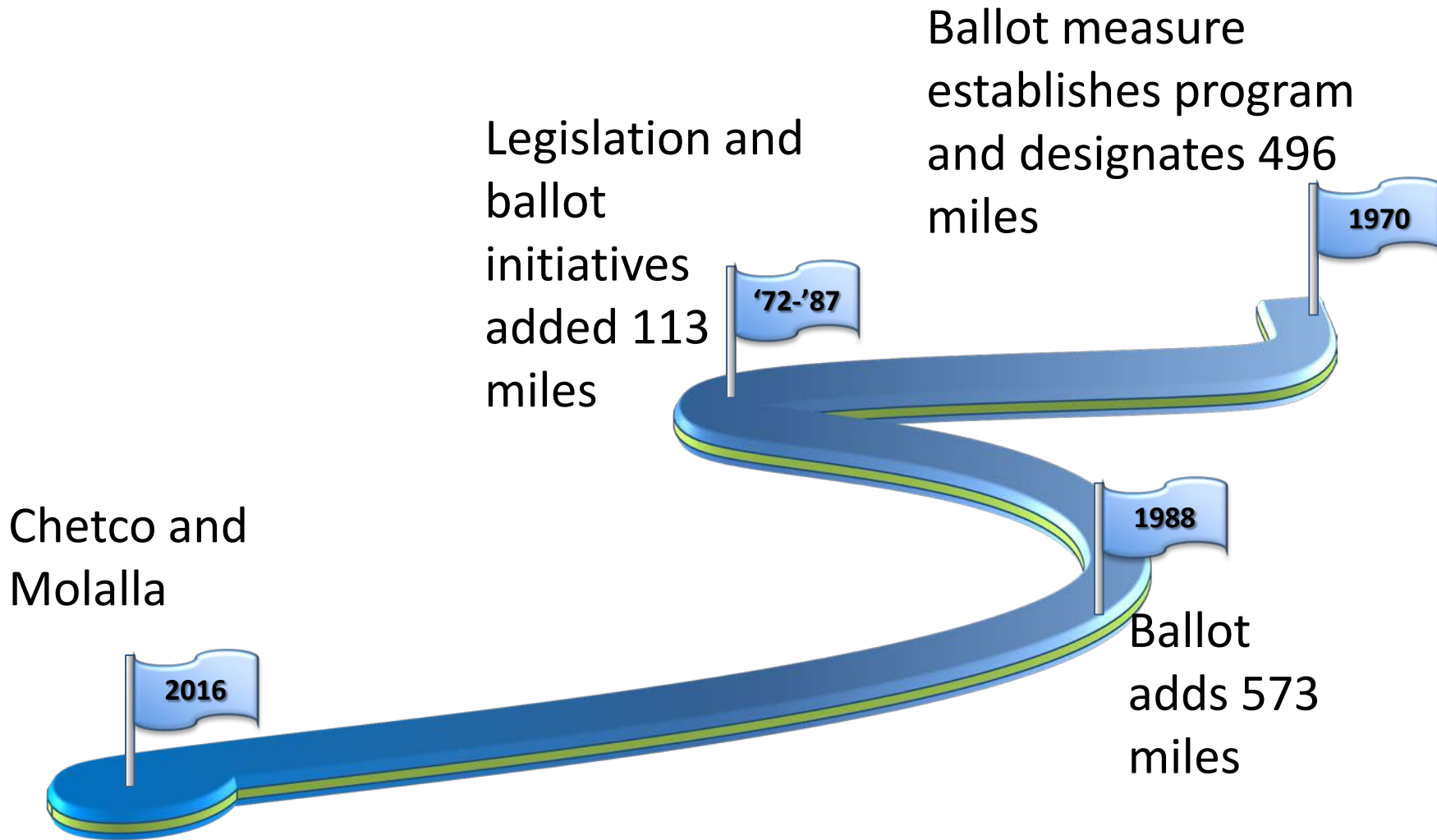


## Alex Phillips, Bikeways and Waterways Coordinator

- Program overview
- Current study
- ORS requirements

**Rogue River Scenic Waterway**

# History and Overview



Currently: 22 designated Scenic Waterways

# ORS state agency requirements

## 390.855

- Water Resources concurs with recommendation before forwarding to Governor
- OPRD shall consult with State Fish and Wildlife Commission, the State Department of Agriculture and Department of Environmental Quality Commission and Dept. of State Lands and other such persons or agencies as it considers appropriate.

## 390.845

- Rules are adopted after consultation with the State Board of Forestry, the State Dept of Agriculture, and the affected counties and with concurrence with Water Resources Commission.





- Highest and best use of waters within a Scenic Waterway are recreation, fish, and wildlife uses.
- Program designed to protect the existing aesthetic, scenic and recreation values



**Nehalem River Study segment**





## Program Does

- Protects the natural and scenic diversity within  $\frac{1}{4}$  mile of river
- Encourages new development to blend in with existing
- Sets minimum flows
- Prohibits dams, reservoirs, placer mining

**Nehalem River Study segment**



## **Program doesn't do:**

- **Does not change existing water rights**
- **Does not allow public use of private land**
- **Does not remove existing development**
- **Does not promote use of river**

## Notification of Intent OAR 736-040-0030

Improvements or changes to land adjacent to a designated scenic river within  $\frac{1}{4}$  mile from the banks require a written notification of intent to Oregon State Parks.

Processing time ~ 30 days



John Day Scenic Waterway



## Notification Required:

- Improvements to structures, buildings
- Timber Harvest
- Tree Cutting
- Prospecting, mining, dredging, quarrying operations
- Transportation facilities and utilities
- Erosion protection



# Exemptions

- Construction of fences
- Maintenance of farm buildings and fences
- Laying of irrigation lines
- Pump house construction, if screened, unobtrusive, and compatible with the scenic qualities of the area
- Additions to farm buildings, if screened, unobtrusive, and compatible with the scenic qualities of the area
- Crop rotation
- Grazing land management
- Construction of silos and grain storage facilities, if screened, unobtrusive, and compatible with the scenic qualities of the area
- Cutting of hazard trees



Waldo Lake Scenic Waterway

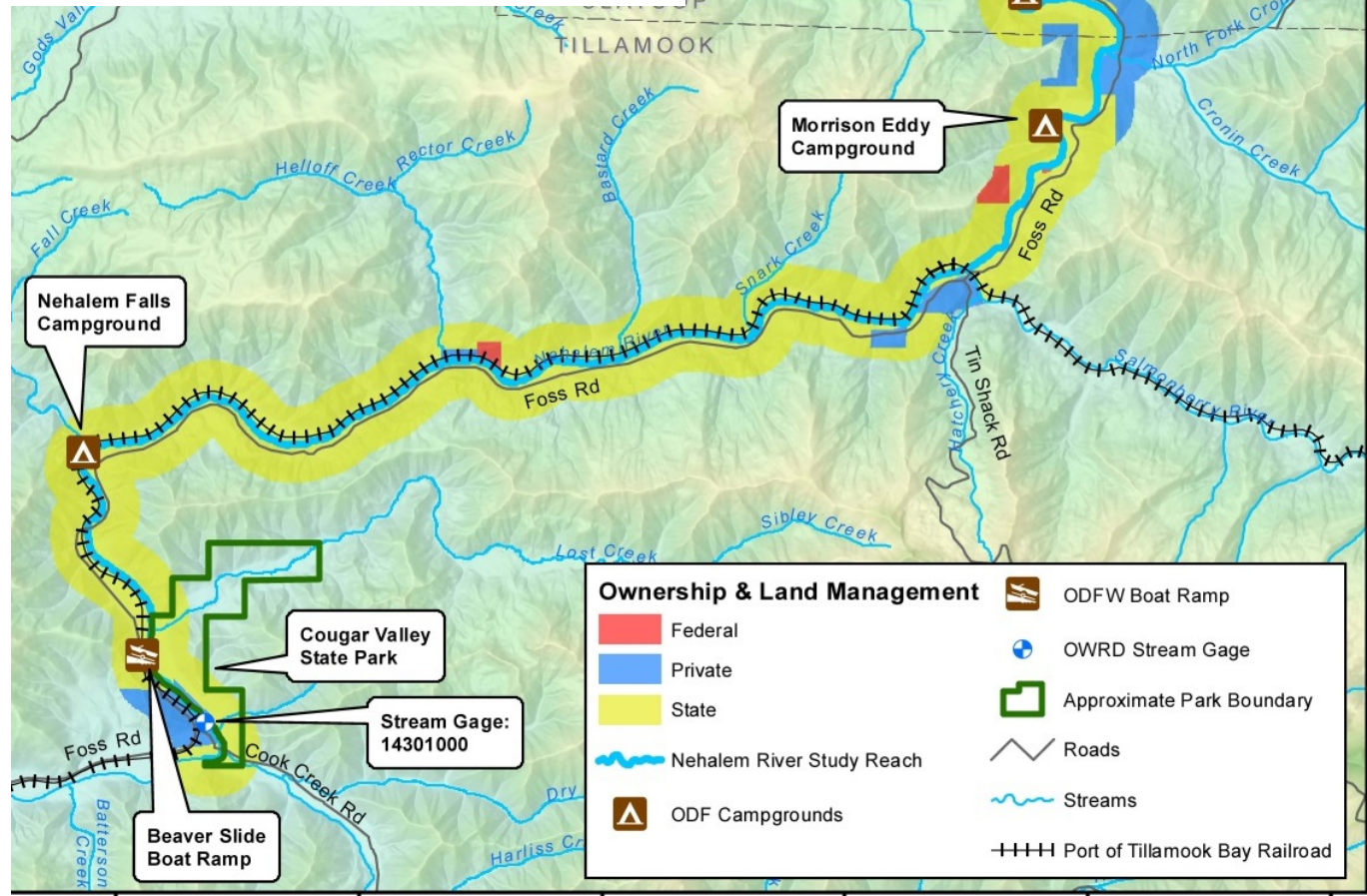






## Exemptions:

- Maintenance of existing homes
- Modifications to existing dwellings, construction of garages necessary to the use of existing homes, if screened, unobtrusive, and compatible with the scenic qualities of the area
- Changes to home-site landscaping, which do not impair vegetation screening structures from view from the river
- Construction of protective fences necessary to use of the home
- Cutting of firewood for dwelling
- Cutting of danger trees



State Parks Department directed by statute to periodically study new waterway recommendations



Ownership & Land Management		Other Features	
<span style="display:inline-block; width:15px; height:15px; background-color:red; border:1px solid black;"></span> Federal	<span style="display:inline-block; width:15px; height:15px; background-color:blue; border:1px solid black;"></span> Private	<span style="display:inline-block; width:15px; height:15px; background-color:yellow; border:1px solid black;"></span> State	 ODFW Boat Ramp
 Nehalem River Study Reach	 Approximate Park Boundary	 ODF Campgrounds	 OWRD Stream Gage
 ODF Campgrounds	 Roads	 Streams	 Port of Tillamook Bay Railroad

# Studies for new designations

## Criteria

- The river is relatively free flowing and the scene as viewed from the river and related adjacent land is pleasing. Whether primitive, rural-pastoral, or these conditions are restorable.
- The river and its setting possess natural and recreation values of outstanding quality.
- The river and its setting are large enough to sustain substantial recreation use without undue impairment of the natural values of the resource or quality of the recreation experience.



## State Parks Staff Finding

River section in study meets criteria





Date	Nehalem River Study Timeline - To Date
Jan. 2017	Public provided input on which river to study
May 2017	Nehalem River field visit
Sept. 2017	Public meeting in Nehalem and Public comment period
March 2018	formation of Management Plan Advisory Committee
May 2018	First Advisory Committee meeting



# Nehalem River Study Timeline – moving forward

	June	July	Aug.	Sept.	Oct.	Nov.	Dec.
Second Advisory Committee meeting		18					
Public meeting			TBD				
Public comment			TBD				
State Parks and Water Resources Commissions vote				Call		★ ★	
Recommendation and management plan sent to Governor							★





## Received 1,409 Public Comments

### Ten in opposition

- Three private landowners
- Timber company
- Oregon Scenic Coast Railroad
- Tillamook County Commission

### 1399 in Support

- 70 unique comments
- One private landowner
- Clatsop County Commission





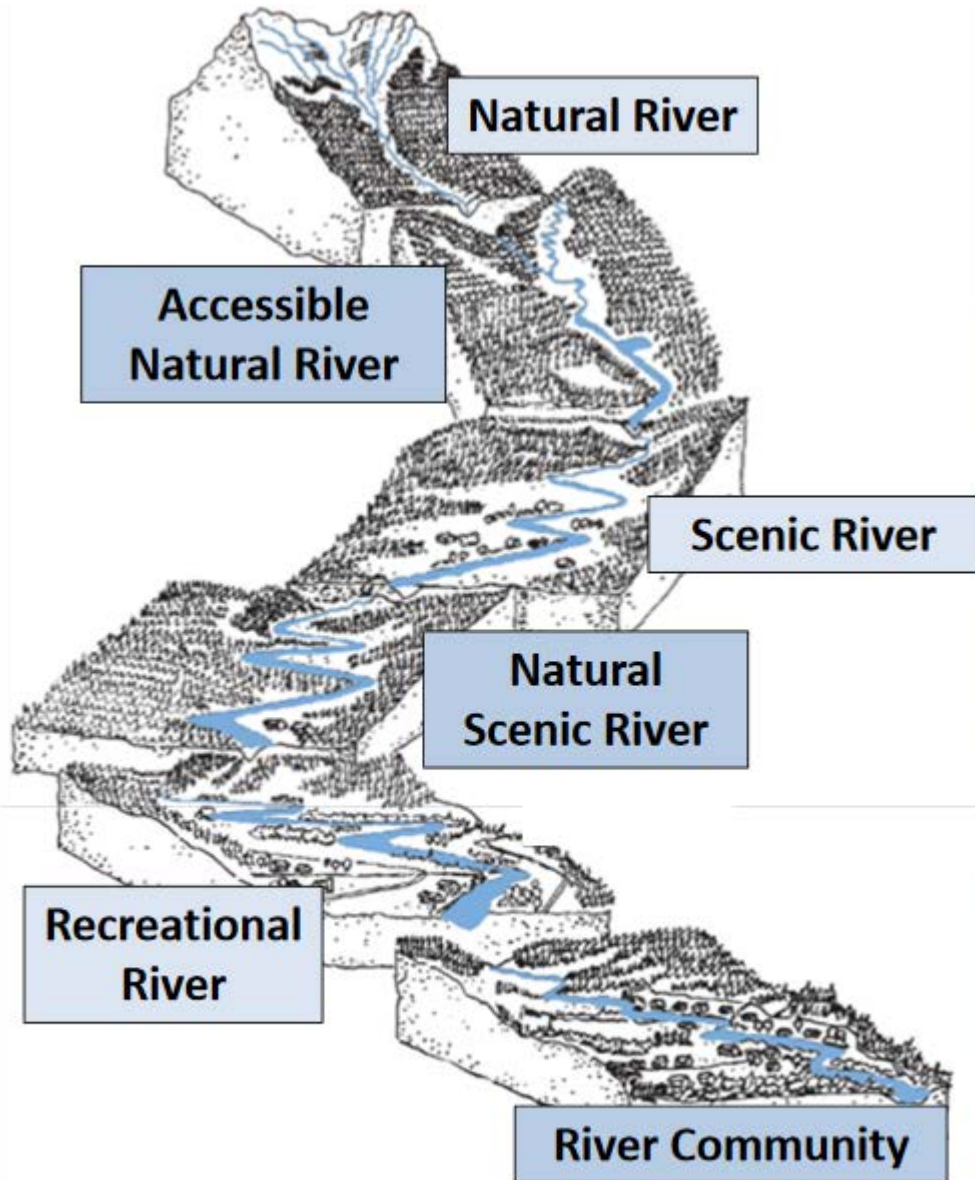
## Management Plan

- **Guidelines for new development or landscape alterations**
  - **Guidelines adopted into OPRD OAR**
  - **Input from Advisory committee**





## River Categories



### **Recreational River:**

Contains mix of agricultural, residential and commercial  
Accessible via roads

managed to protect view from river, allows development consistent with existing land uses and provide for recreational activities

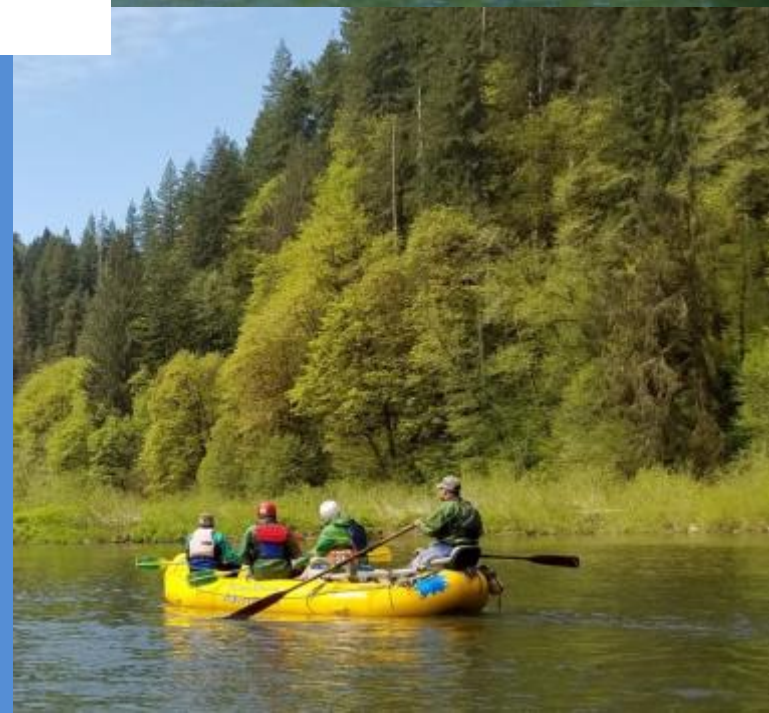
---

Discussion of guidelines for new development and landscape alternations at next meeting





Nehalem River study segment









More information on OPRD website



visit



things to do



get involved



about us



shop



Oregon Parks and Recreation Department

- Department
- Search
- About Us
- Goals
- Contact Us
- Scenic Bikeways
- Oregon Coast Trail Maps
- Budget & Facts
- Oregon Parks and Recreation Commission
- SCORP & Research Reports
- Scenic Waterways
- Jobs with OPRD
- Procurement & Contracts
- News
- Performance Measures



About Us

Mission Statement

The mission of the Parks and Recreation Department is to provide and protect outstanding natural, scenic, cultural, historic and recreational sites for the enjoyment and education of present and future generations.

Programs and Services

All-terrain Vehicles

- Vehicle Permits
- ATV Grants
- Safety Classes

Bikeways (scenic places to ride)

Employment

Grants

- County Opportunity
- Land and Water Conservation
- Local Government
- Recreational Trails
- Veterans' and War Memorial
- Water Trails
- Trails

Heritage Programs