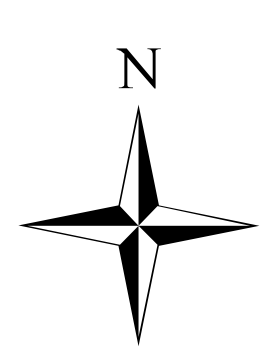
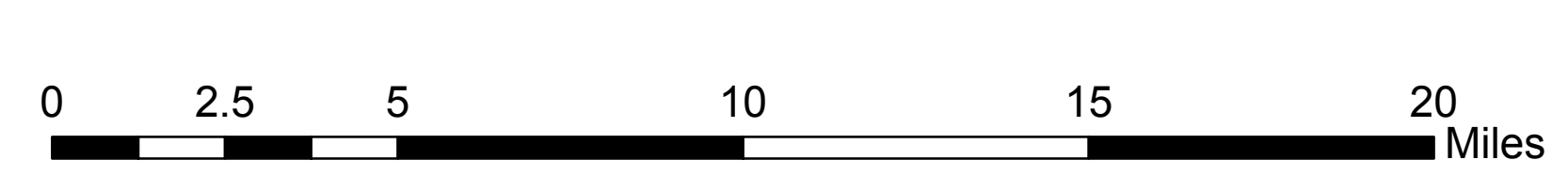
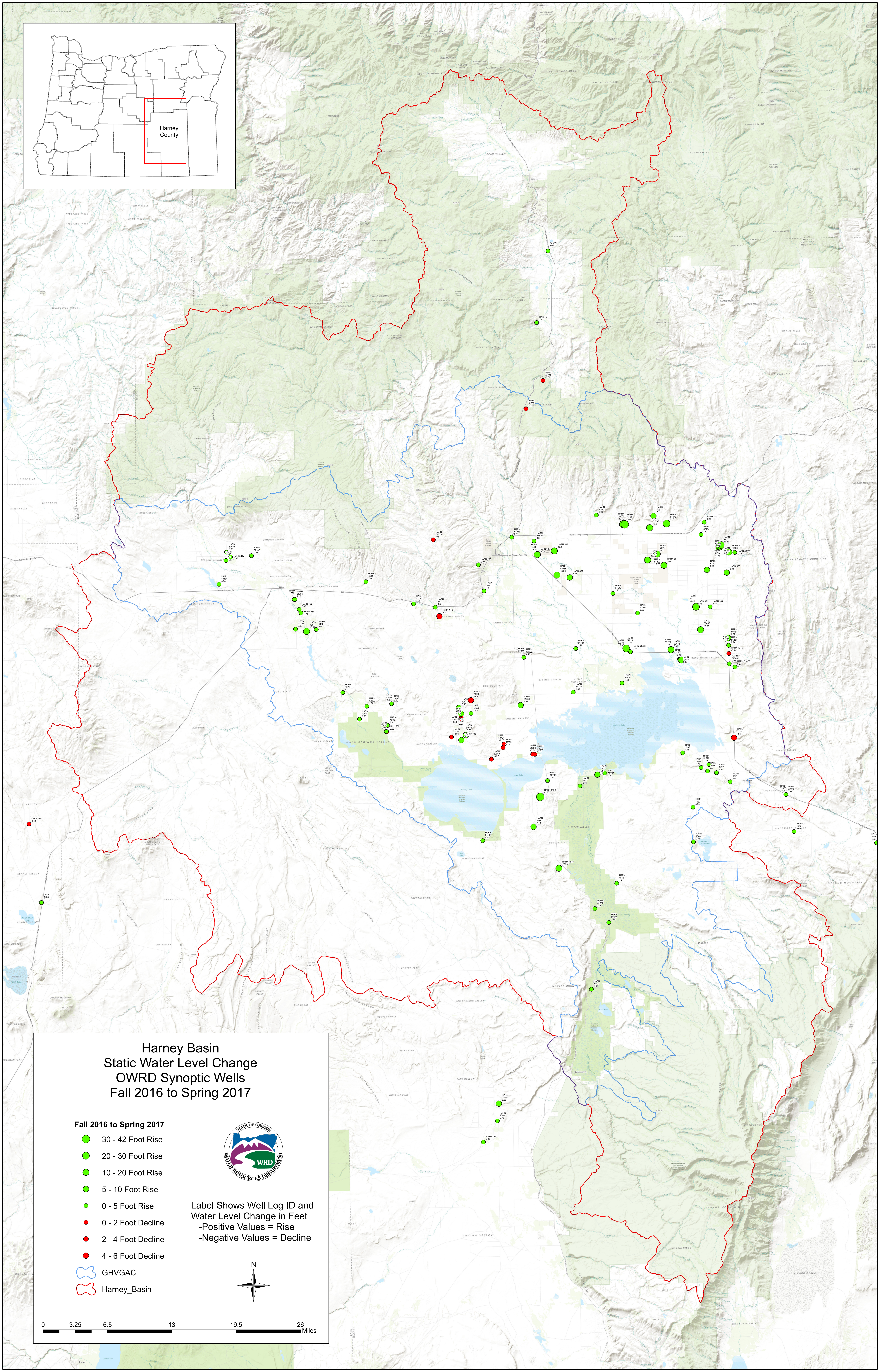
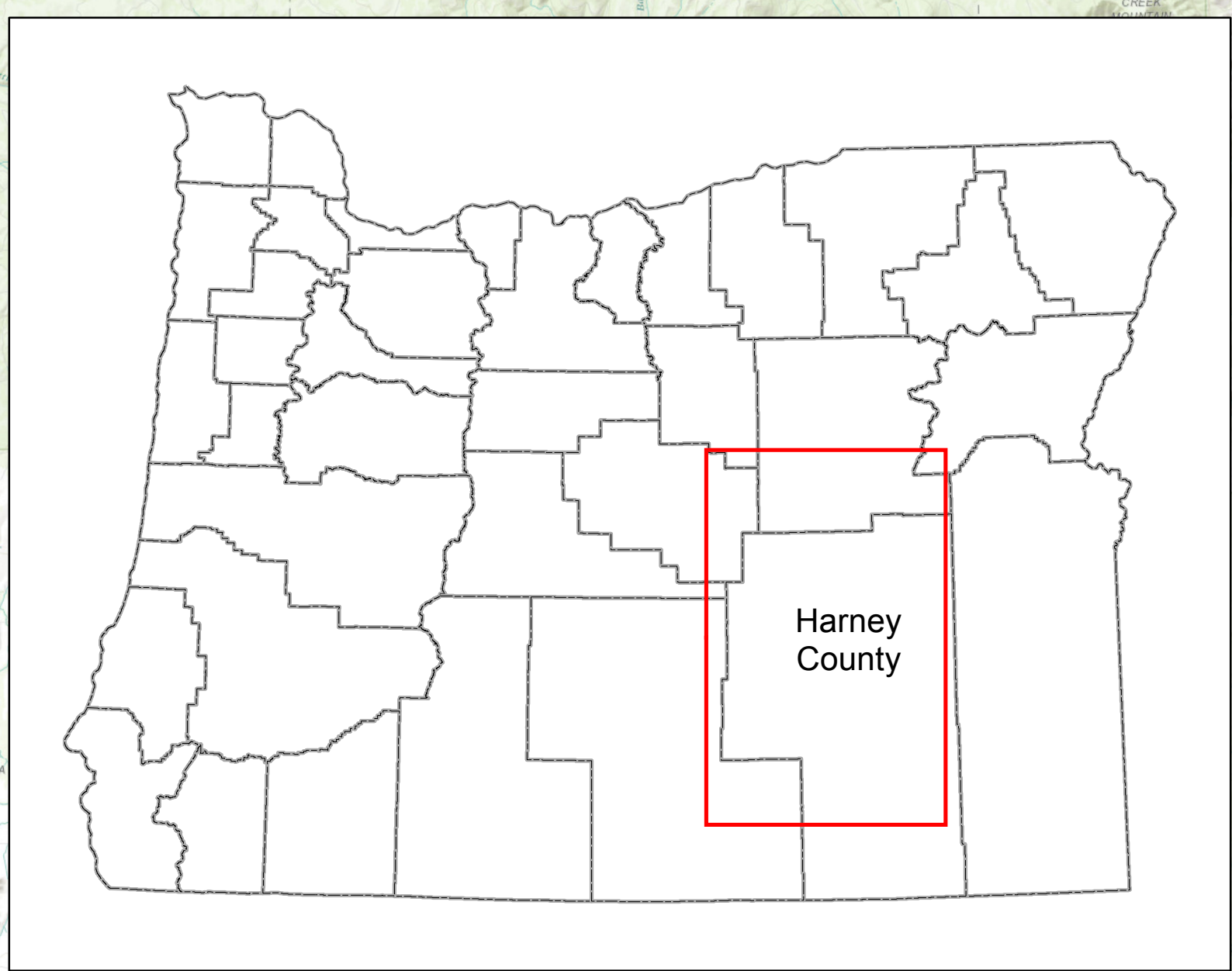


Harney Basin Spring 2017 Synoptic Wells Not Measured Due to Access Issues or Pumping



- ◆ Spring 2017 Synoptic Wells Not Measured
- ◆ Spring 2017 Synoptic Wells Measured
- GHVGAC
- Harney_Basin





Harney Basin Static Water Level Change OWRD Synoptic Wells Fall 2016 to Spring 2017

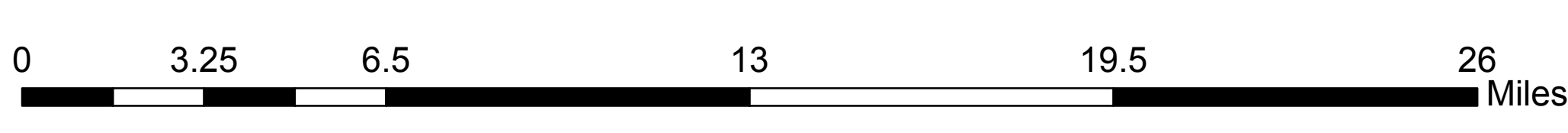
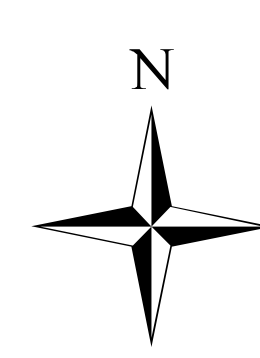
Fall 2016 to Spring 2017

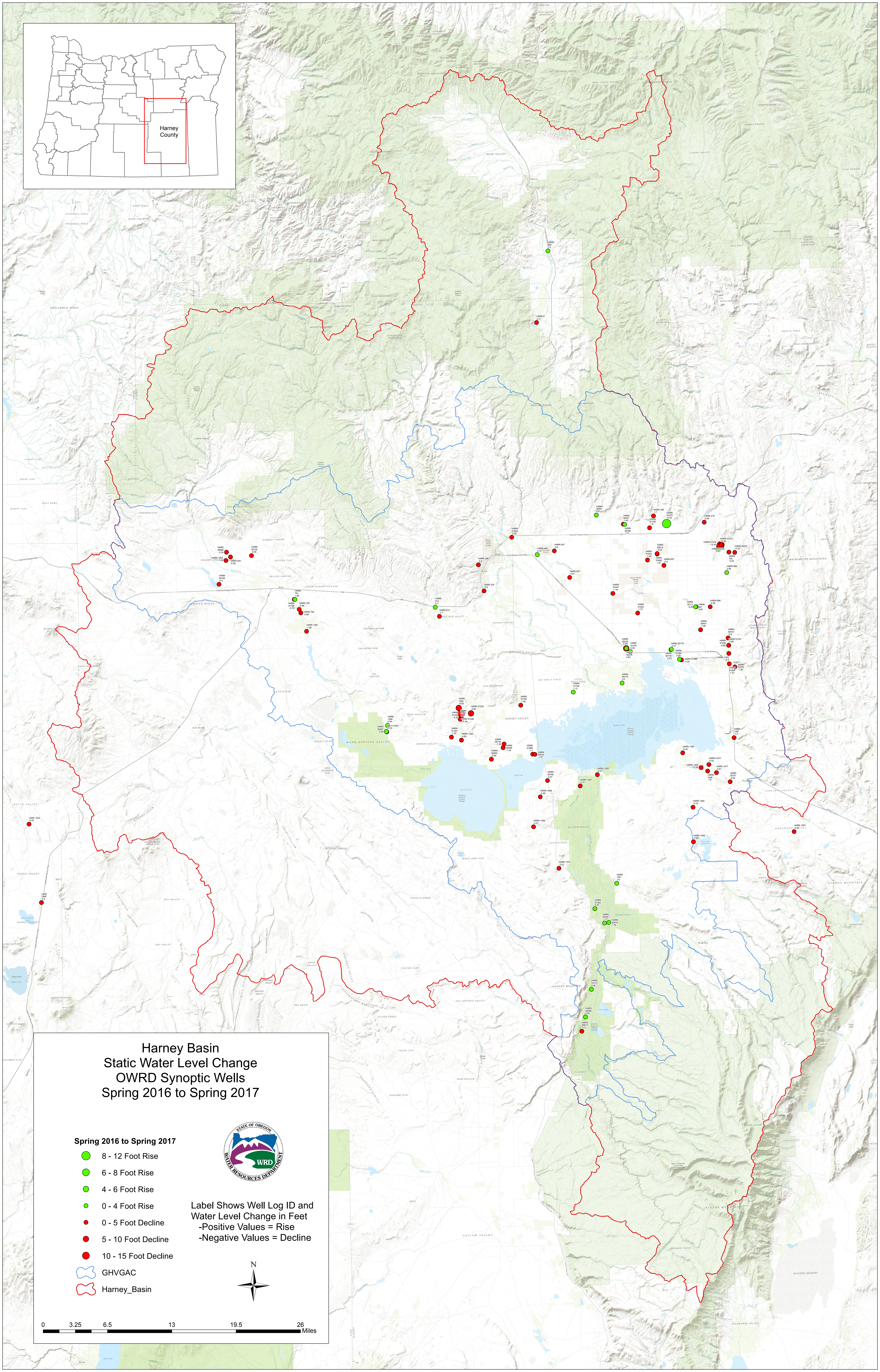
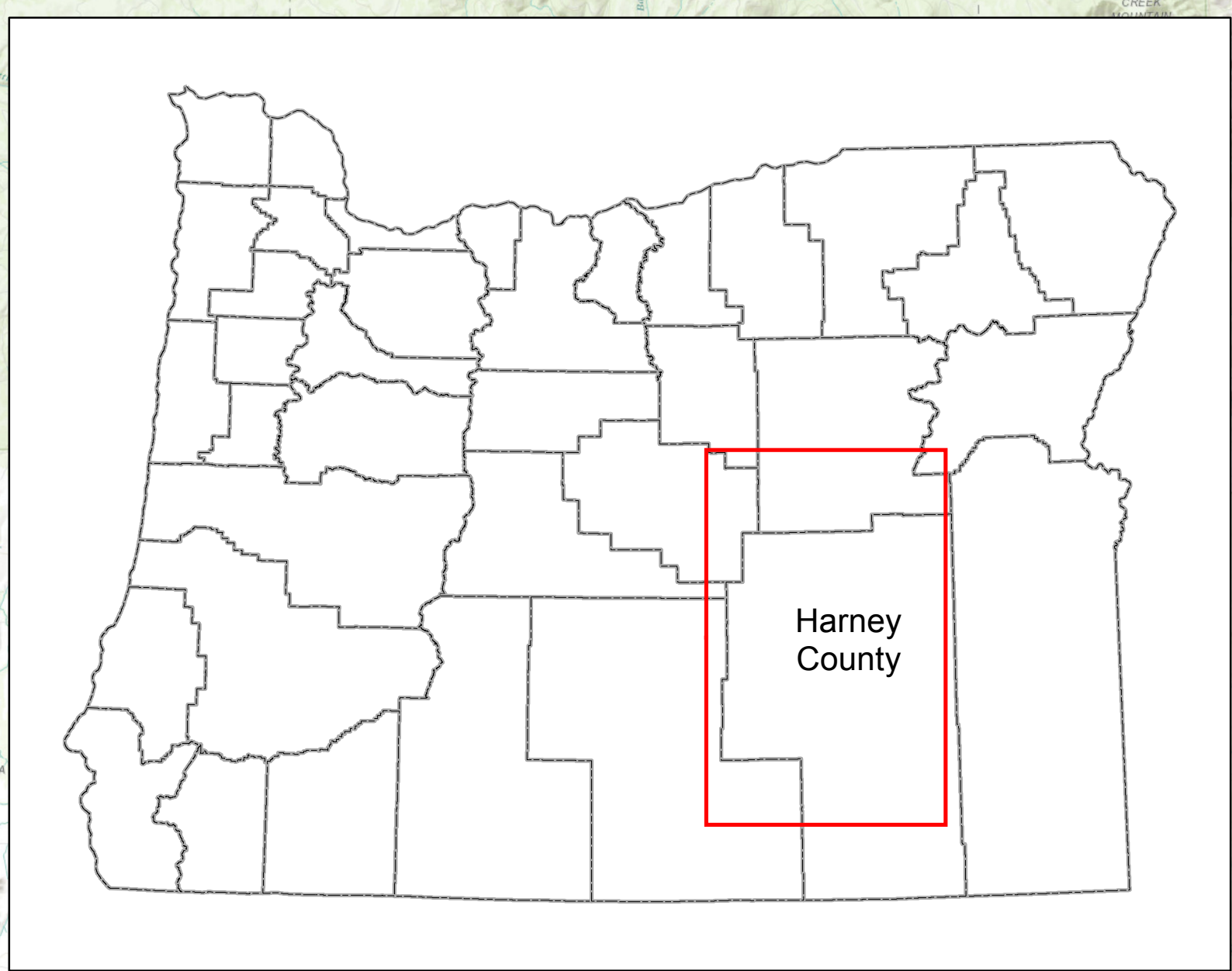
- 30 - 42 Foot Rise
- 20 - 30 Foot Rise
- 10 - 20 Foot Rise
- 5 - 10 Foot Rise
- 0 - 5 Foot Rise
- 0 - 2 Foot Decline
- 2 - 4 Foot Decline
- 4 - 6 Foot Decline

- ⬭ GHVGAC
- ⬭ Harney_Basin



Label Shows Well Log ID and
Water Level Change in Feet
-Positive Values = Rise
-Negative Values = Decline





**Harney Basin
Static Water Level Change
OWRD Synoptic Wells
Spring 2016 to Spring 2017**

- Spring 2016 to Spring 2017**
- 8 - 12 Foot Rise
 - 6 - 8 Foot Rise
 - 4 - 6 Foot Rise
 - 0 - 4 Foot Rise
 - 0 - 5 Foot Decline
 - 5 - 10 Foot Decline
 - 10 - 15 Foot Decline
 - ⬇ GHVGAC
 - ⬇ Harney_Basin



Label Shows Well Log ID and
Water Level Change in Feet
-Positive Values = Rise
-Negative Values = Decline

