

OREGON

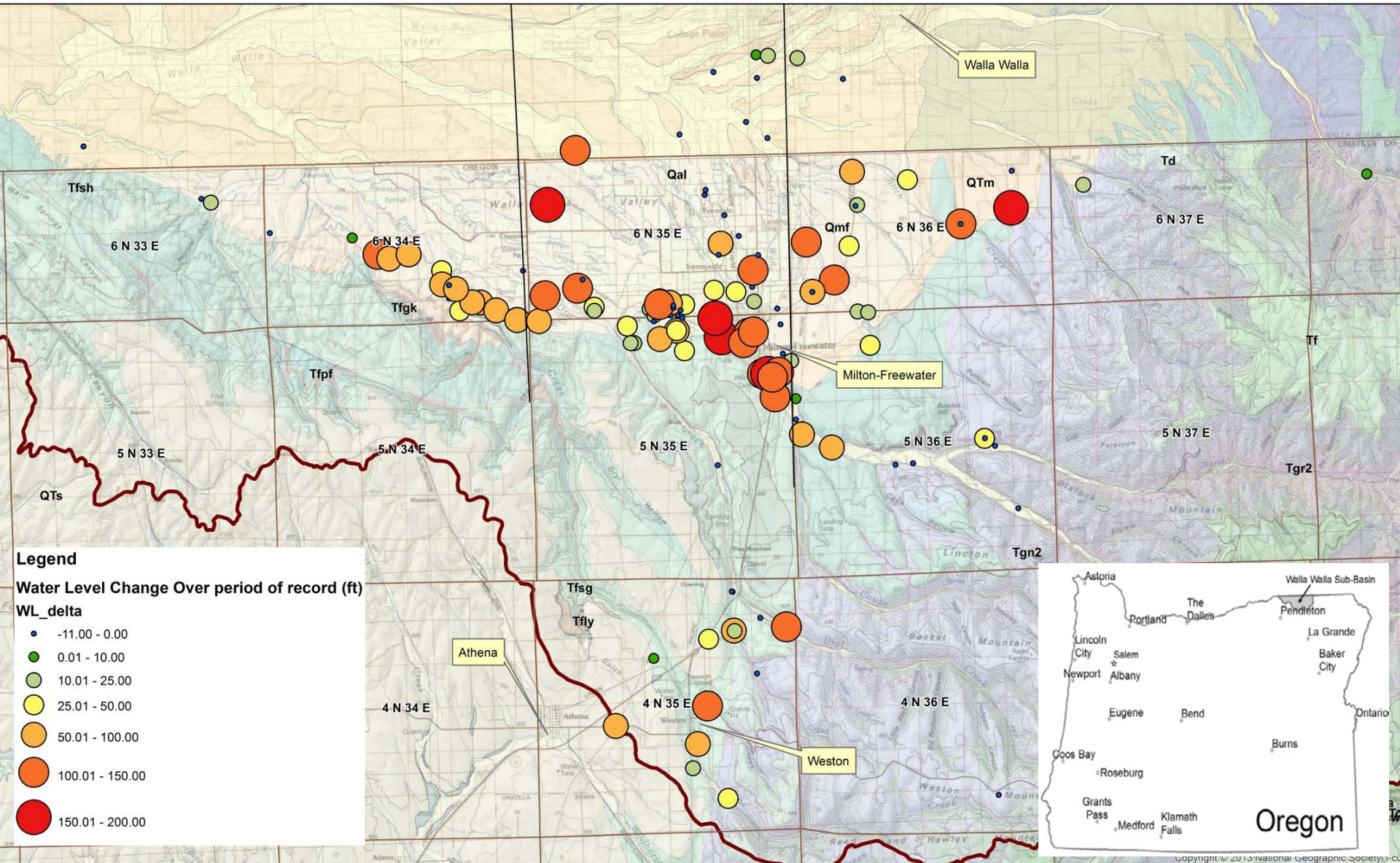


WATER RESOURCES
DEPARTMENT

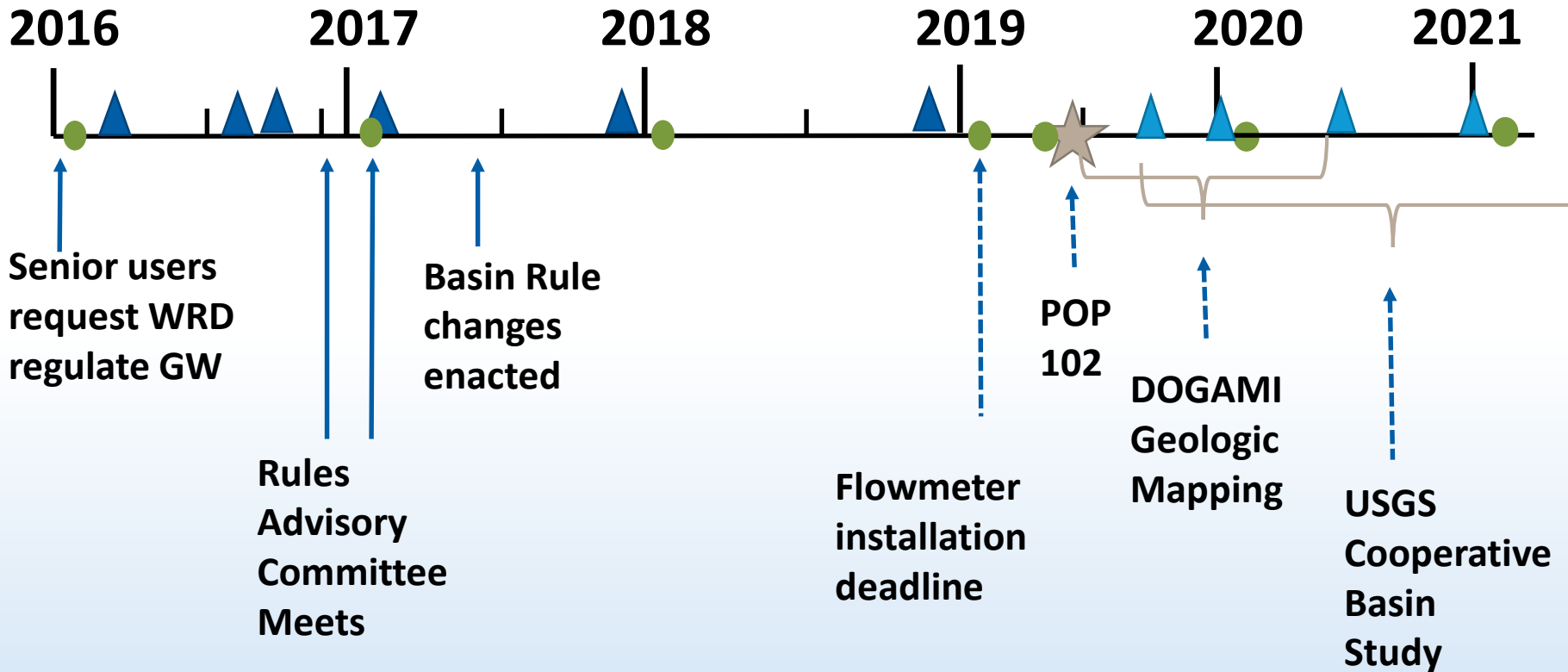
Walla Walla Basin Groundwater Update

Justin Iverson, Groundwater Section Manager

Walla Walla GW Problem Statement



Actions to Address Problem



▲ WRD-led Public Meeting
▲ (lt. blue = anticipated)

● WRD staff measure water levels & read flowmeters: basalt wells with water rights

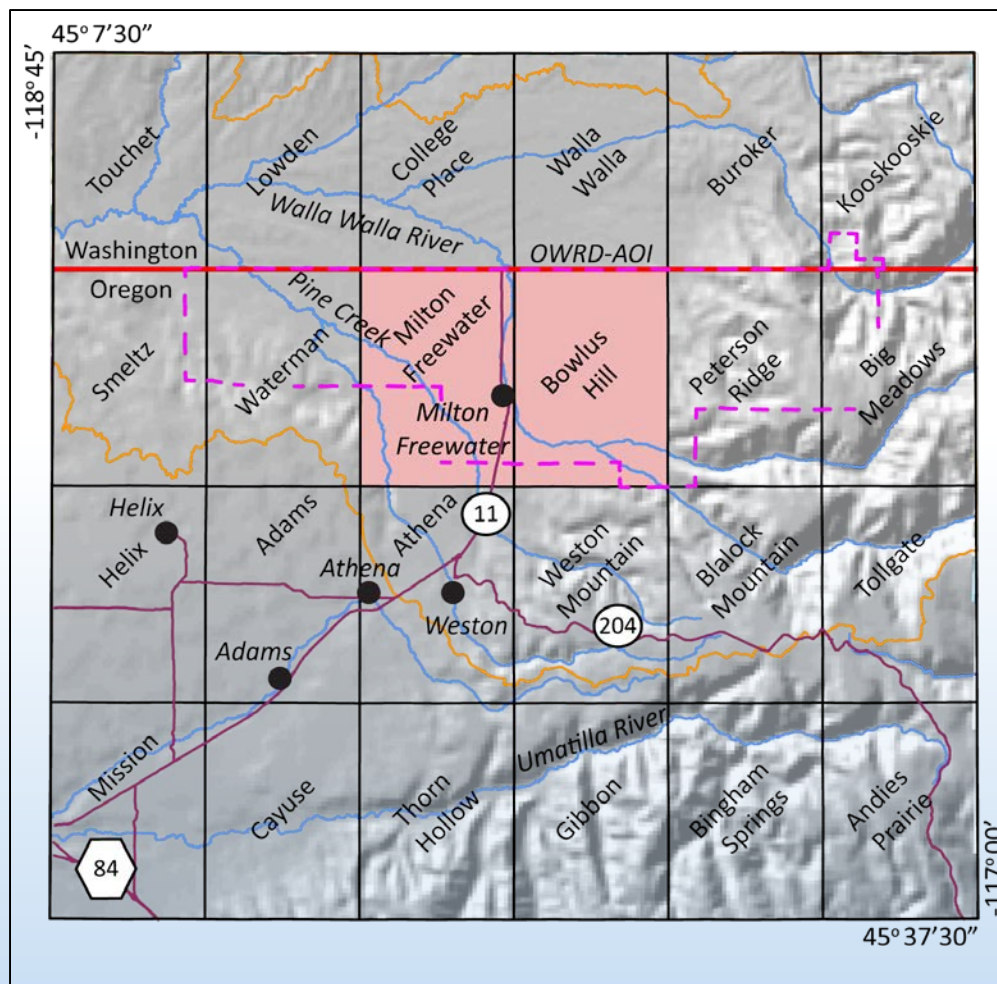
New GW Study Resources

- Six new staff positions: groundwater, surface water, information services, public outreach
- \$800k for cooperative studies and installation of observation wells and data collection instrumentation
- Walla Walla Basin is our next priority



Purpose and objective:

- Better understand distribution of faults and folds in basalt units
- Produce detailed geologic maps and databases to support description of groundwater flow in basalt aquifers



Cooperative Basin Study

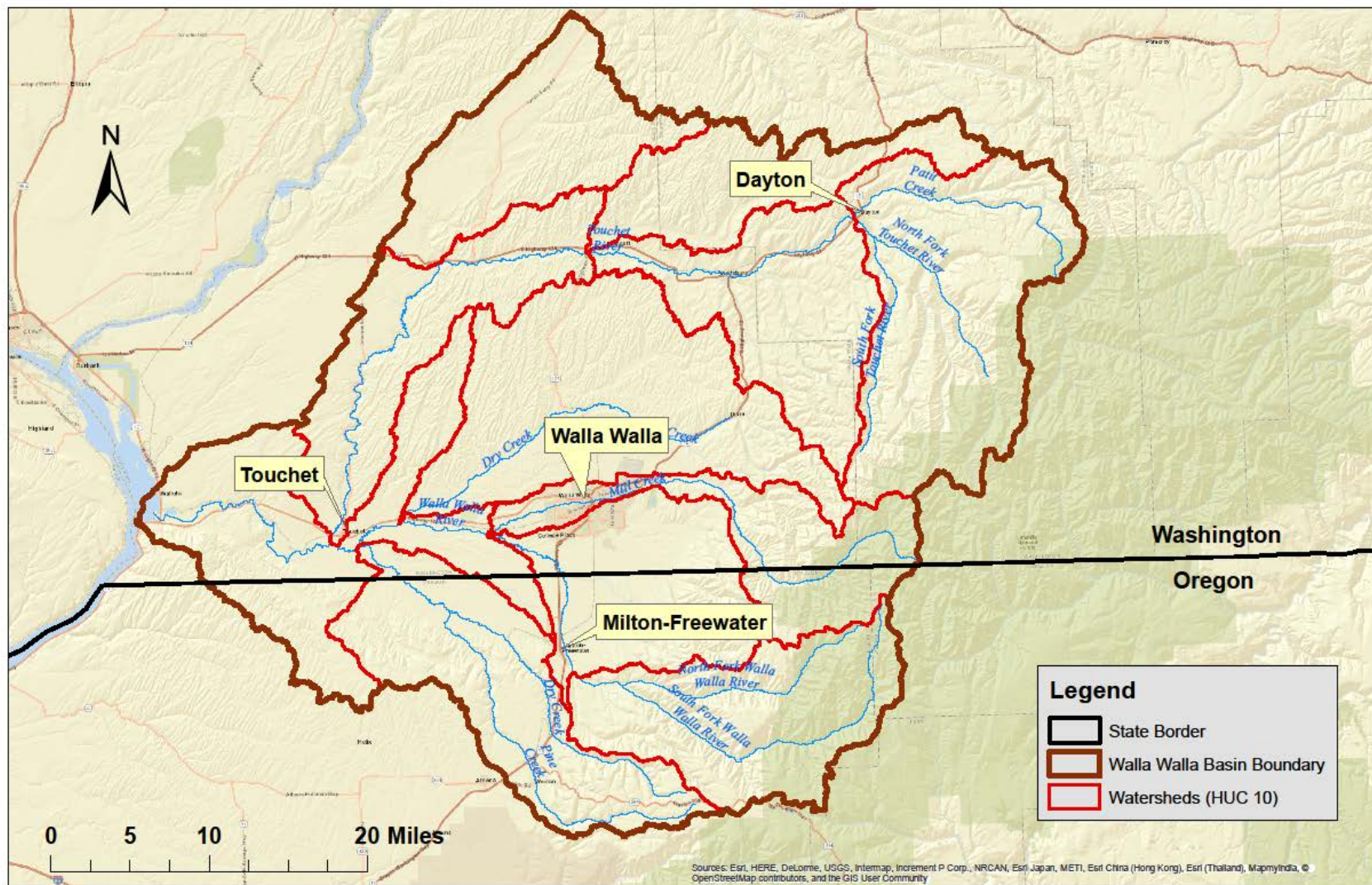


Figure: Potential northern extents of Walla Walla Basin Cooperative Study

Cooperative Basin Study

- Committed to local engagement
- Desire to partner with Washington and Tribes
- Initial data collection work beginning this fall
- Final scope after partnerships established and public input sought

