



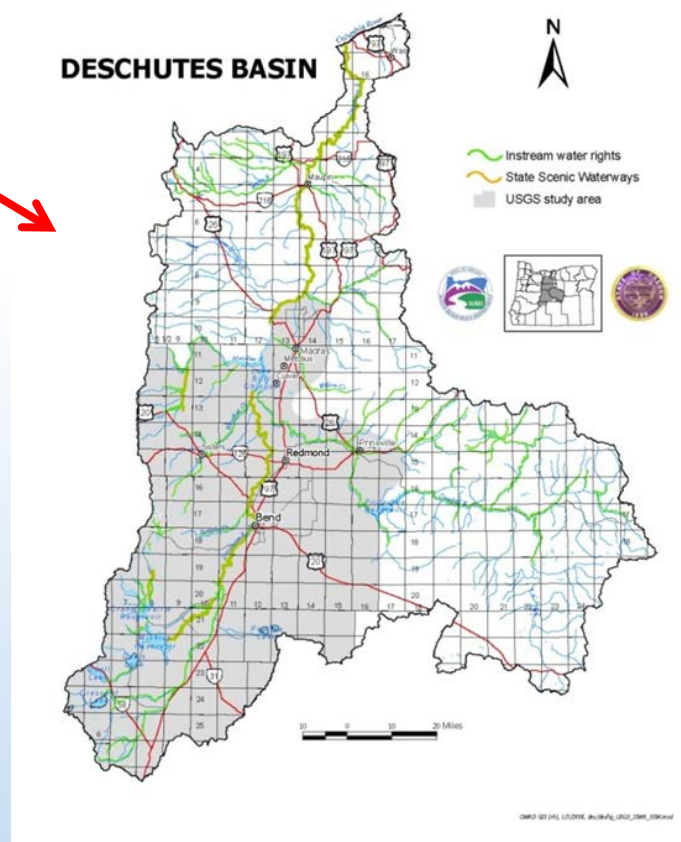
Preview of Upcoming Rulemaking

Division 522

Deschutes Basin Water Management

Dwight French, Water Right Services Division Administrator

- Deschutes Basin Ground Water Study
- Direct hydrologic connection
- Scenic Waterway (SWW) flows
- No surface water available
- Mitigation Program developed



Elements of Mitigation Program

- New ground water permits require mitigation
- Identifies tools for providing mitigation
- Establishes a system of mitigation credits
- 200 cubic feet per second (CFS) allocation cap
- Provides for establishment of mitigation banks
- Requires annual and 5-year evaluations

Existing Rule – Division 522

- Commission adopted in 2010
- Related to the Deschutes Groundwater Mitigation Program
- Works in conjunction with Divisions 505 and 521
- Provides criteria for establishing “mitigation credits” and “mitigation water”

Mitigation Terminology

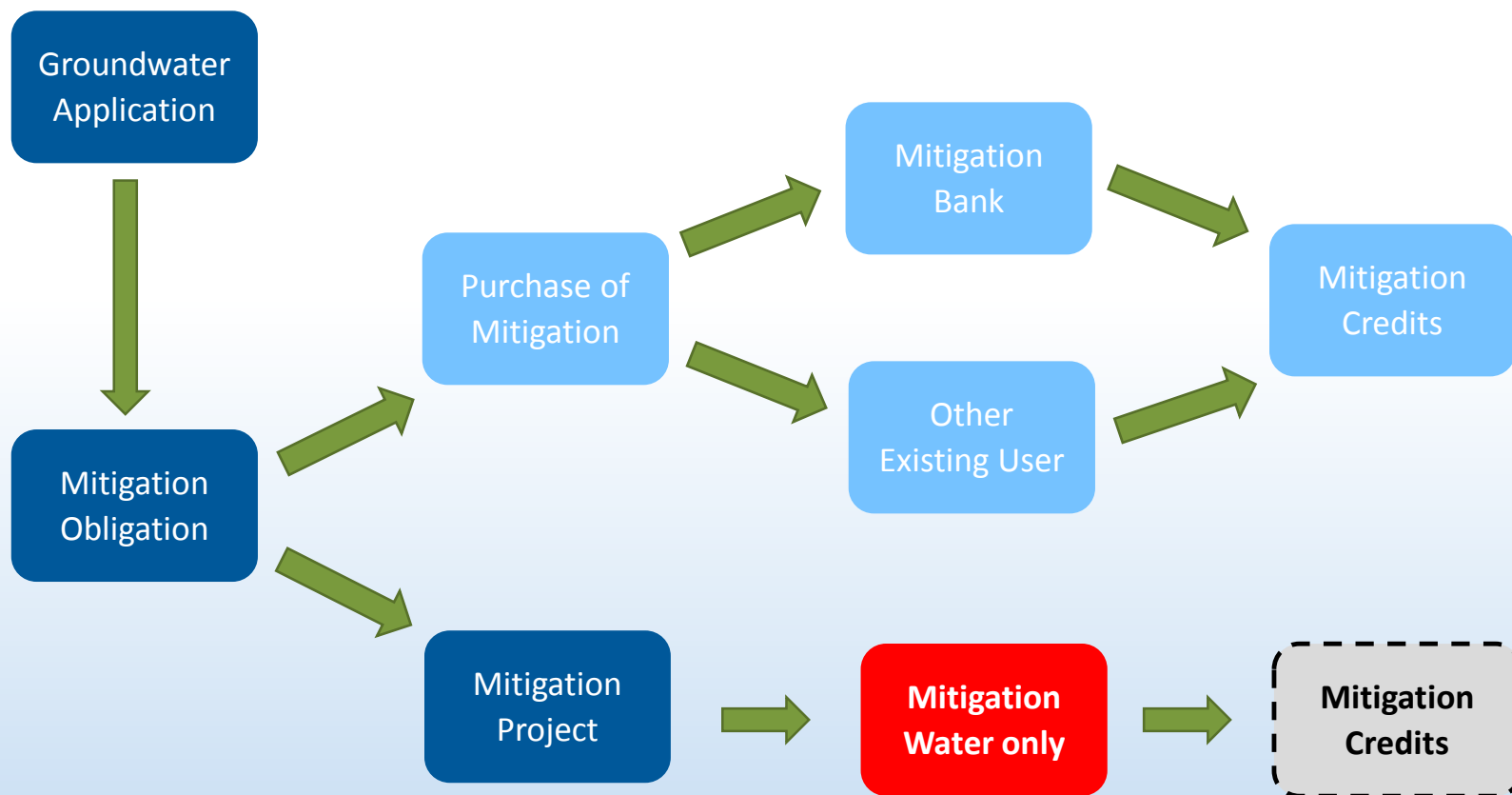
- Mitigation –
 - Obligation
 - Project
 - Water
 - Credit



Existing Rule – Division 522

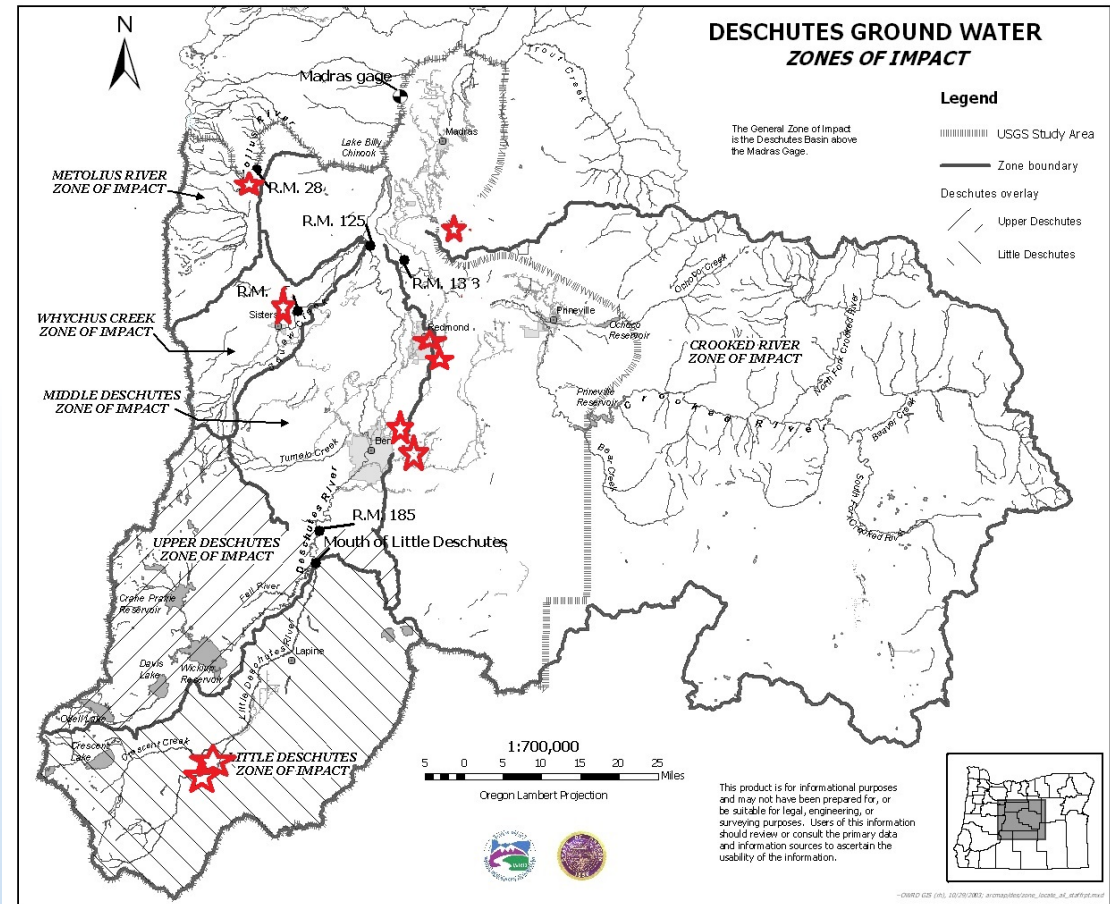
- Allows unused permanent “mitigation credits” to be re-assigned to meet new mitigation obligation(s)
- Does **not** allow “mitigation water” to be re-assigned to meet new mitigation obligation(s)

Mitigation Flow Chart



Need for Rulemaking

- Provide clarity on awarding credits for 9 existing mitigation projects



Need for Rulemaking

- Some zones currently lack available mitigation credits
- Potential to make more credits available

Potential Mitigation Credits by Zone of Impact

General	Whychus	Little Deschutes	Middle Deschutes	Crooked	Upper Deschutes	Metolius
1936.6	172.5	562.5	0	10.1	0	16.3

Next Steps and Timeline

- Hold 1 or 2 Rules Advisory Committee Meetings
- Public Comment
- Public Hearing
- Seek Adoption by Commission in early 2020



OREGON



WATER RESOURCES
DEPARTMENT

Thank you.