

Walla Walla River Basin Groundwater Study



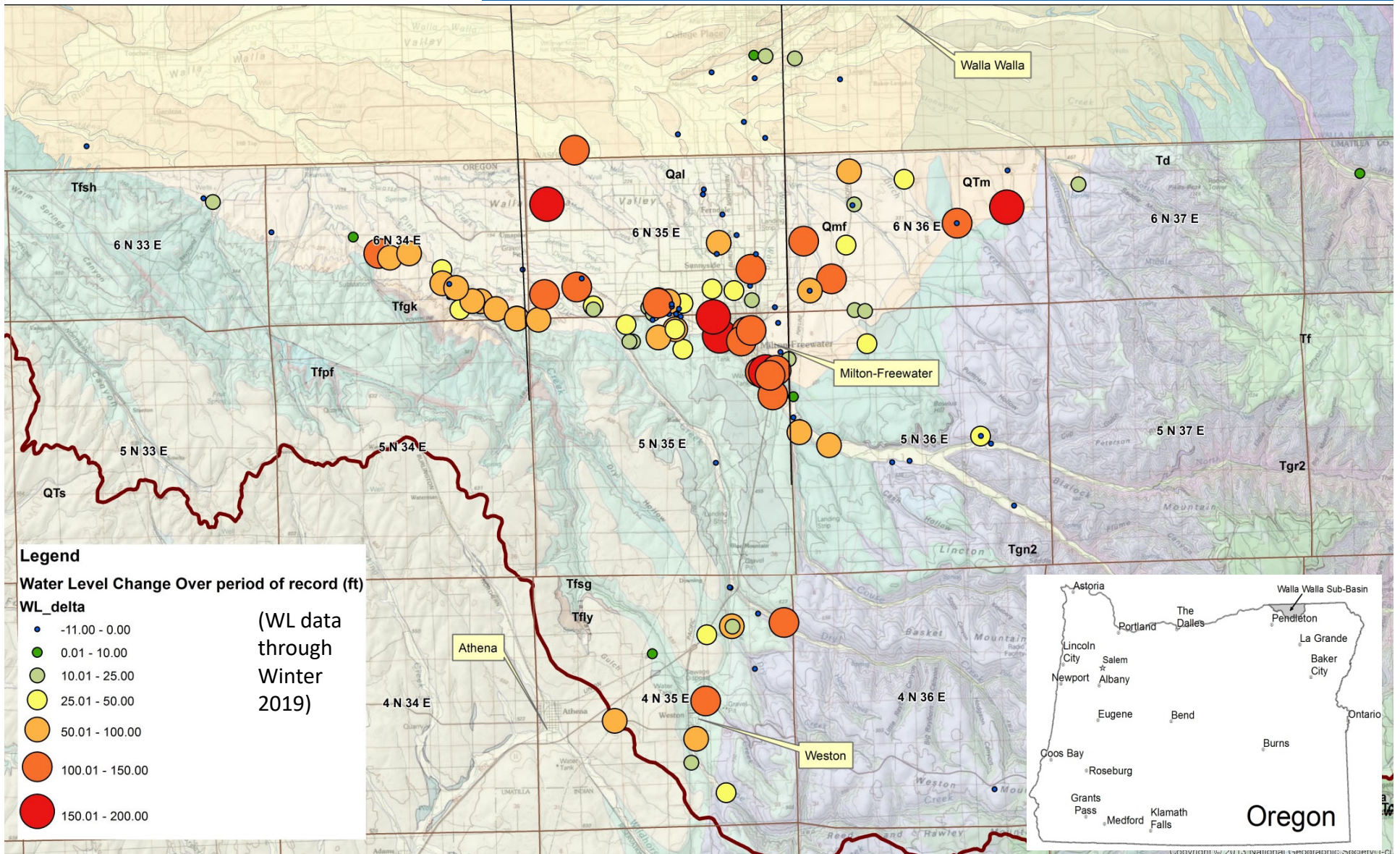
Groundwater Study Work Plan and Public Participation Plan

February 18, 2021

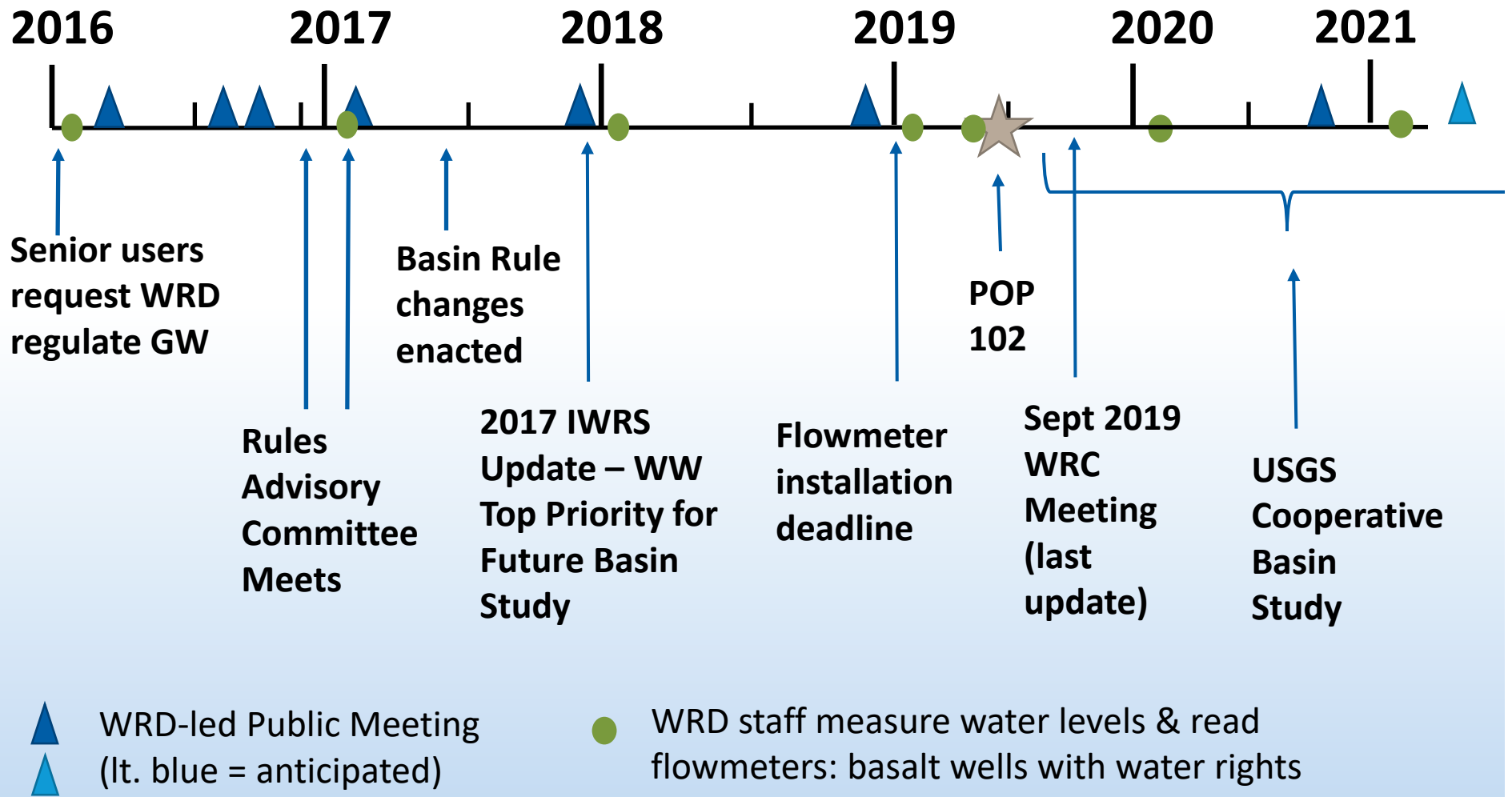
Justin Iverson, Groundwater Section Manager
Harmony Burrig, Planning Coordinator



Walla Walla GW Problem Statement

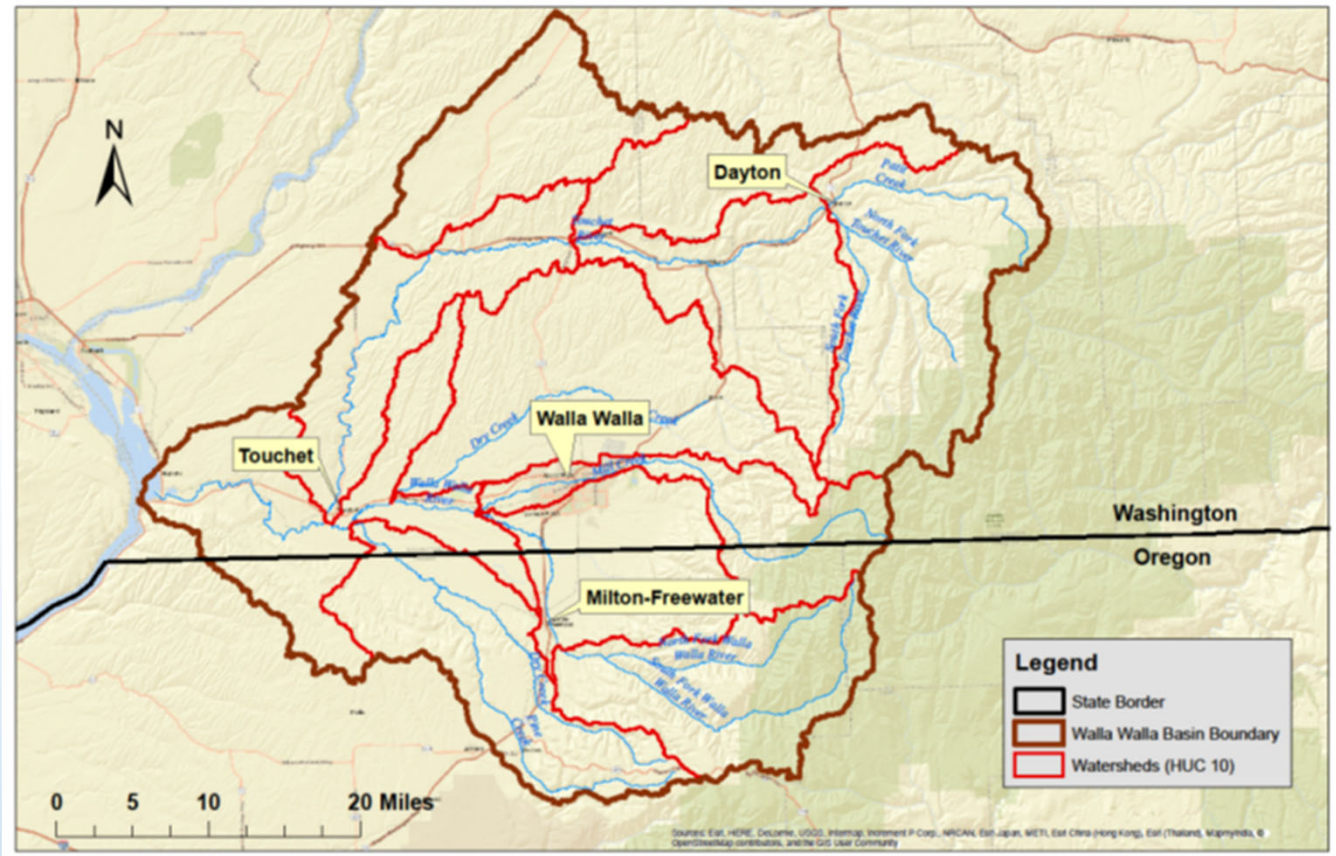


Actions to Address Problem



Groundwater Basin Study

- Scope of Study finalized this month
 - 4 Agencies
 - 4 Years
 - \$4 Million
- Full Hydrologic Basin



Study Overview

- Current Understanding and Data Gap Assessment
- Data Collection
- Analysis/Interpretation
 - Hydrogeologic Framework
 - Groundwater Budget
 - Integrated Groundwater Flow System
- Report Writing
- Peer Review and Publication



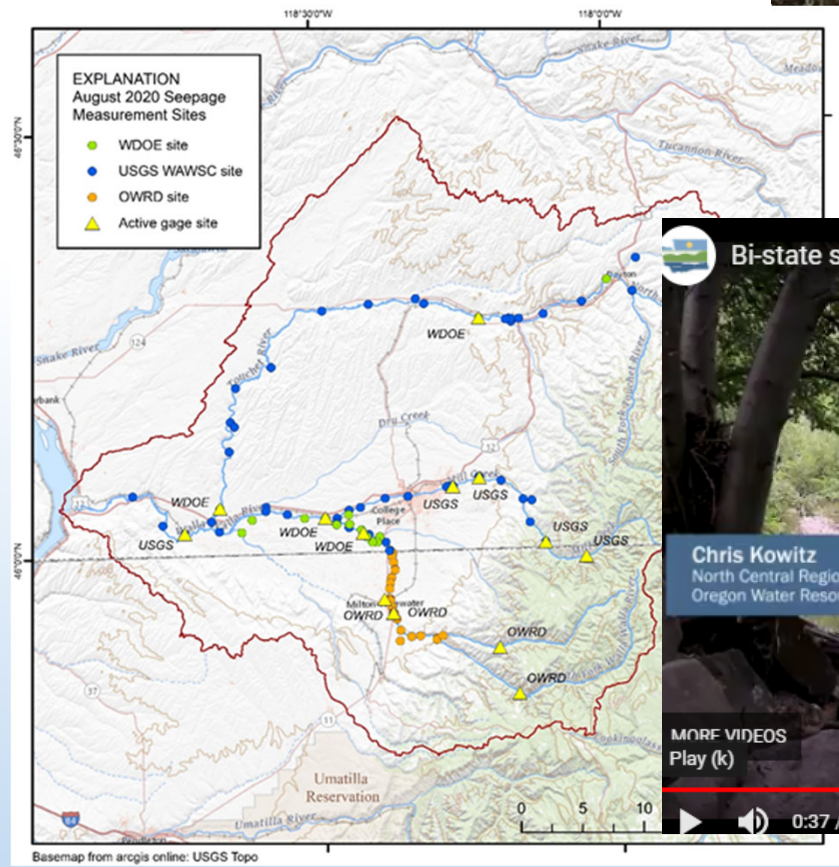
OWRD Funding

- Study funding broken into WA and OR components
- 60/40 Cost Share Between States and Feds
- OWRD Portion approximately \$1 Million
- Mix of General Fund and Exempt Use Fees



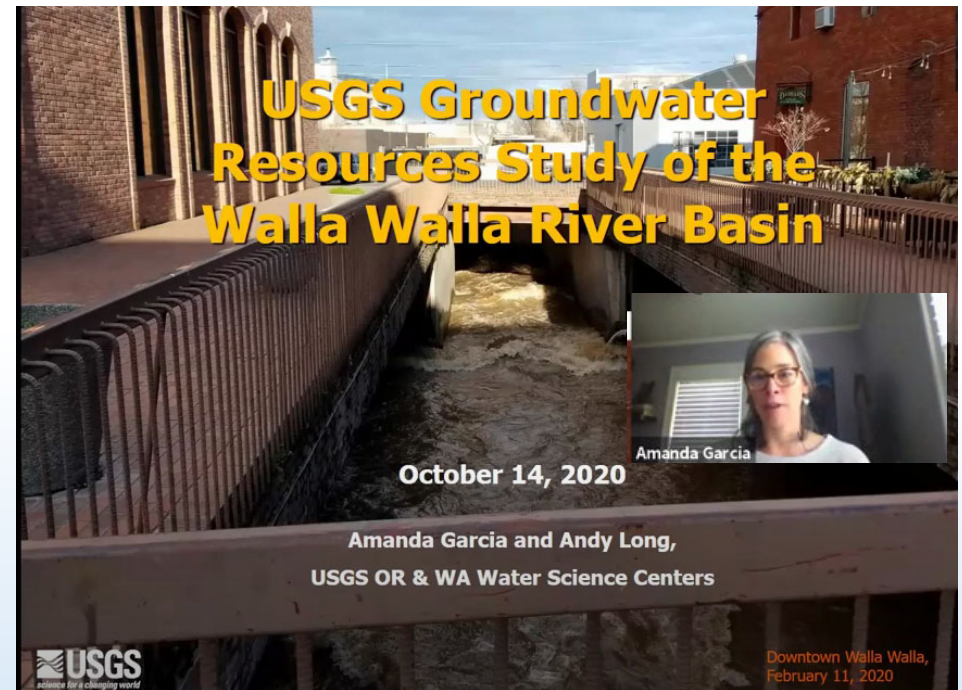
Cooperative Work To Date

- October 2020 Seepage Run



Public Scoping Meeting

- October 14, 2020
- Over 70 participants from the public
- Over 25 participants from cooperating agencies
- Desire to create “a solid basis for future cooperation and action”



What Did We Hear?

Groundwater...



- Connections between alluvial, basalt, and surface water systems
- Variation in groundwater level trends over space and time and how it relates to hydrogeology and development trends
- Water budget and balance – recharge, use, storage, and discharge

What Did We Hear?

Science...



- Updates at key milestones in the process
- Regular updates about what is going on and what is planned
- Utilize past studies and data whenever possible
- Publicly available data
- Opportunities to contribute observations, knowledge, input

Groundwater Study Steps



Public Participation Plan

- Virtual presentations in the spring
- In-person public events in the fall
- Technical Advisory Group meetings 2x per year
- Quarterly email updates



You are receiving this email because you expressed interest in receiving updates about water management activities in the Walla Walla Basin from the Oregon Water Resources Department. You can unsubscribe at any time by scrolling down to the bottom of this email.



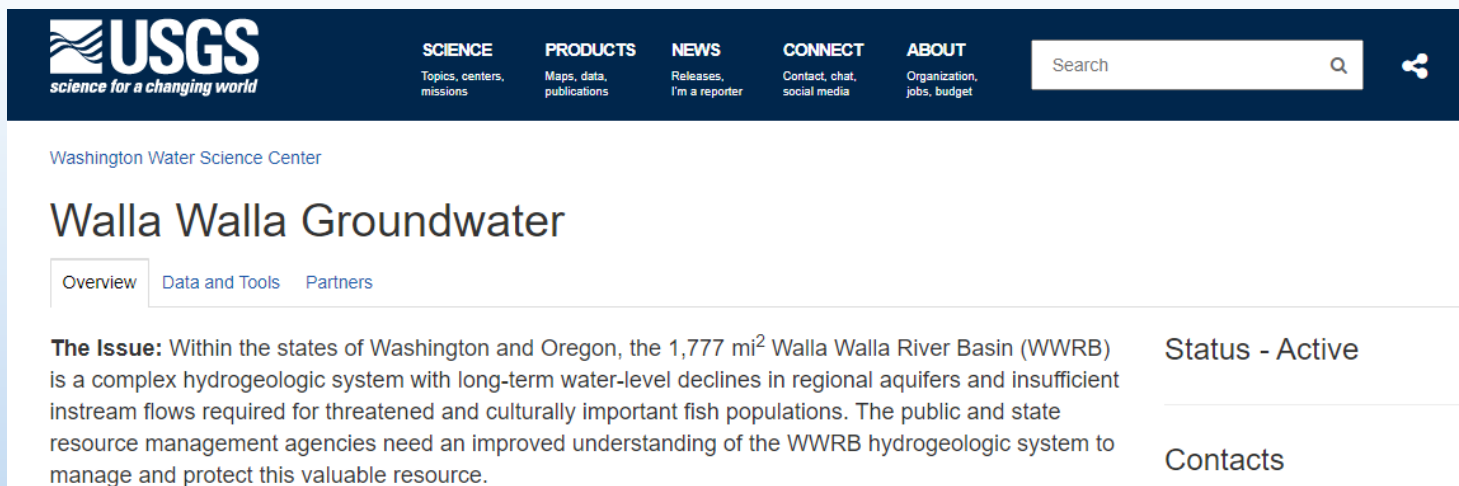
We're rolling into the Walla Walla River Basin to collect groundwater levels over the next two weeks! Thanks to all who have volunteered access to their wells!

We're in the field collecting data!

Oregon Water Resources Department (OWRD) staff will be measuring groundwater levels at wells between January 25th and February 5th, 2021. We plan to measure between 200-250 wells in Oregon. We will be incorporating Oregon's current COVID-19 workplace standards into our visits this year. Please reach out to Jen Woody at 503-437-5173 or Jennifer.L.Woody@oregon.gov if you have questions!

Next Steps

- Public review and feedback on Final Work Plan
- Public review and feedback on Draft Public Participation Plan (final version expected in April)
- Virtual presentations in spring 2021
- Convene Technical Advisory Group in fall 2021



The screenshot shows the USGS website header with navigation links for SCIENCE, PRODUCTS, NEWS, CONNECT, and ABOUT. Below the header, the page title is "Walla Walla Groundwater" under the "Washington Water Science Center". The page has tabs for "Overview", "Data and Tools", and "Partners". The main content area contains a paragraph about the Walla Walla River Basin (WWRB) and its hydrogeologic system. To the right of the text, there are two sections: "Status - Active" and "Contacts".

USGS
science for a changing world

SCIENCE
Topics, centers, missions

PRODUCTS
Maps, data, publications

NEWS
Releases, I'm a reporter

CONNECT
Contact, chat, social media

ABOUT
Organization, jobs, budget

Search

Washington Water Science Center

Walla Walla Groundwater

Overview | Data and Tools | Partners

The Issue: Within the states of Washington and Oregon, the 1,777 mi² Walla Walla River Basin (WWRB) is a complex hydrogeologic system with long-term water-level declines in regional aquifers and insufficient instream flows required for threatened and culturally important fish populations. The public and state resource management agencies need an improved understanding of the WWRB hydrogeologic system to manage and protect this valuable resource.

Status - Active

Contacts



Questions?

Find more information online:

<https://www.oregon.gov/OWRD/programs/GWWL/GW/WallaWallaSubbasin/Pages/default.aspx>

Sign-up for the mailing list to receive updates:

<http://eepurl.com/hb4cmL>