

Oregon Water Conditions Report



November 15th, 2021

HIGHLIGHTS

Over 98% of Oregon is classified as experiencing moderate (D1) to exceptional (D4) drought conditions according to the [US Drought Monitor](#). One major change over recent weeks includes improvements in drought conditions in northwestern Oregon due to recent atmospheric river events.

[Statewide precipitation over the past two weeks](#) measured 0 - 4 inches above average, with northwestern Oregon measuring 4 - 8 inches above the long-term average.

[Temperatures over the past two weeks](#) have been much warmer than average throughout the state. Large portions of eastern and western Oregon experienced temperatures greater than 3°F above average, while the rest of the state measured 0 - 3°F above average.

The [near-term climate outlook](#) for the next 8 - 14 days favors below average precipitation and above average temperatures statewide.

Recent precipitation events have contributed to [one-week improvements](#) in [soil moisture profiles](#), though wetness percentiles remain below average throughout much of the state.

Streamflows over the past [7-day](#) and [28-day](#) periods are well above average throughout western and northeastern Oregon (see below for more). Elsewhere in central and eastern Oregon, streams have shown improvements in streamflow over recent weeks, though some remain below the long-term average.

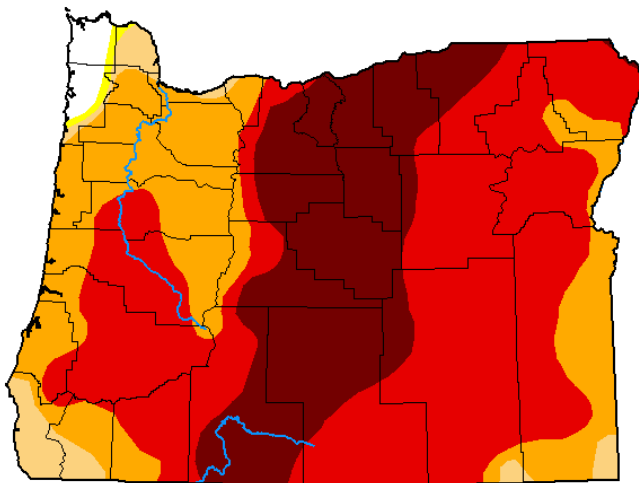
Reservoir conditions in [USBR](#) and [USACE](#) systems (including the [Klamath Basin](#)) remain well below average throughout the state.

DROUGHT CONDITIONS

The US Drought Monitor indicates just over 98% of Oregon is experiencing drought conditions. Changes over recent weeks include improvements in portions of Clatsop and Tillamook Counties (no drought classification), as well as one-category improvements in Curry, Josephine, and Jackson Counties.

U.S. Drought Monitor Oregon

November 9, 2021
(Released Thursday, Nov. 11, 2021)
Valid 7 a.m. EST



Drought Conditions (Percent Area)

	None	D0-D4	D1-D4	D2-D4	D3-D4	D4
Current	1.34	98.66	98.27	94.67	71.57	25.33
Last Week <i>11-02-2021</i>	1.34	98.66	98.27	96.55	72.11	25.34
3 Months Ago <i>08-10-2021</i>	0.00	100.00	100.00	96.06	73.73	24.33
Start of Calendar Year <i>12-29-2020</i>	8.57	91.43	83.53	68.71	27.74	0.00
Start of Water Year <i>09-28-2021</i>	0.00	100.00	100.00	96.47	72.10	26.59
One Year Ago <i>11-10-2020</i>	7.40	92.60	85.30	71.13	39.99	0.00

Intensity:

- None
- D0 Abnormally Dry
- D1 Moderate Drought
- D2 Severe Drought
- D3 Extreme Drought
- D4 Exceptional Drought

The Drought Monitor focuses on broad-scale conditions. Local conditions may vary. For more information on the Drought Monitor, go to <https://droughtmonitor.unl.edu/About.aspx>

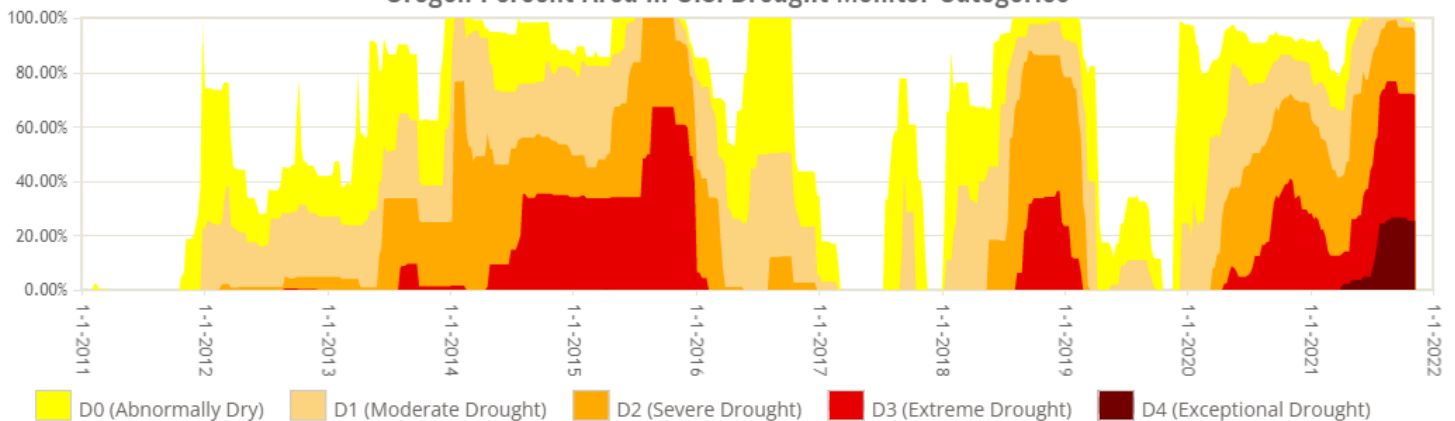
Author:

Curtis Riganti
National Drought Mitigation Center

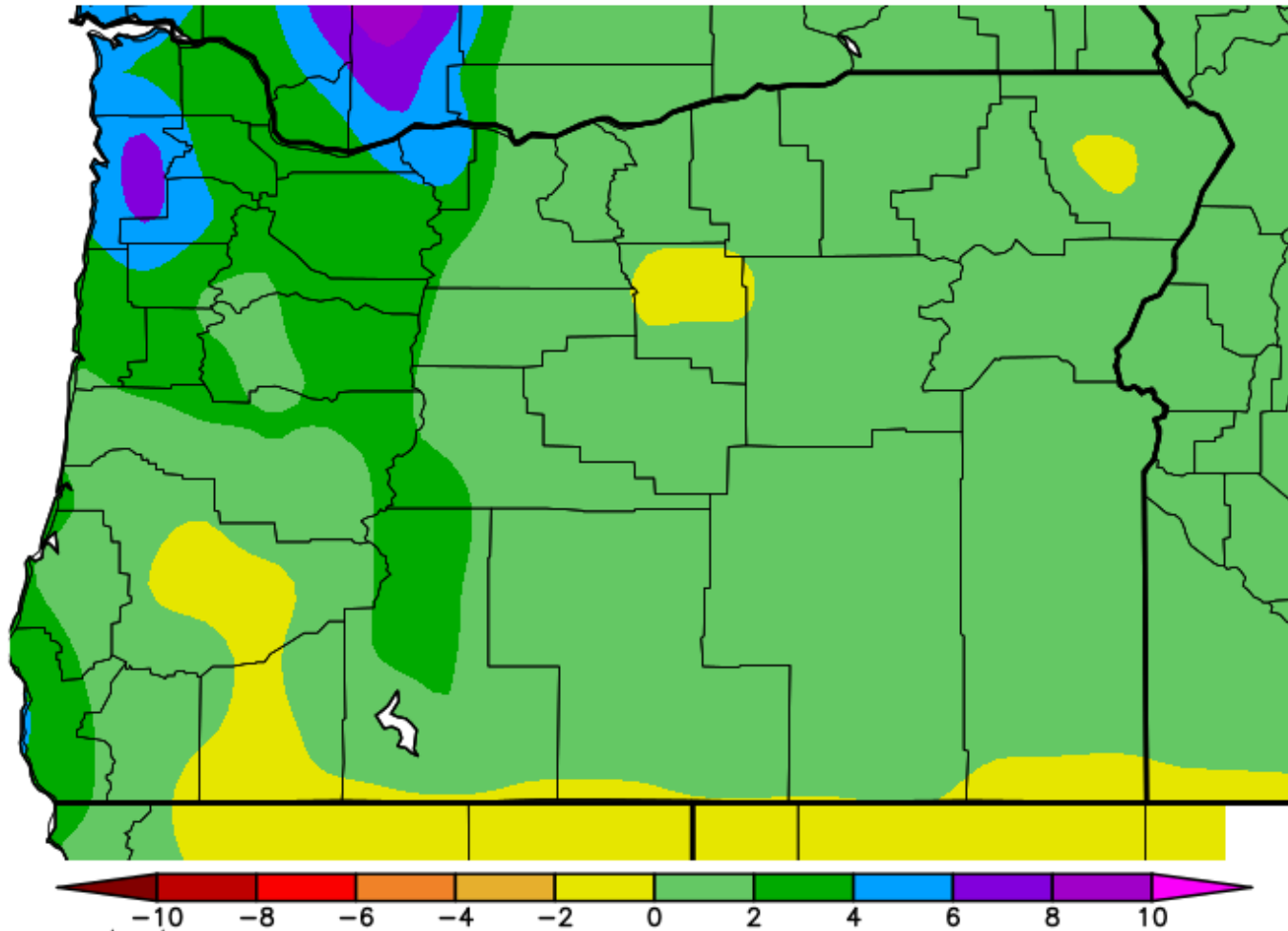


droughtmonitor.unl.edu

Oregon Percent Area in U.S. Drought Monitor Categories

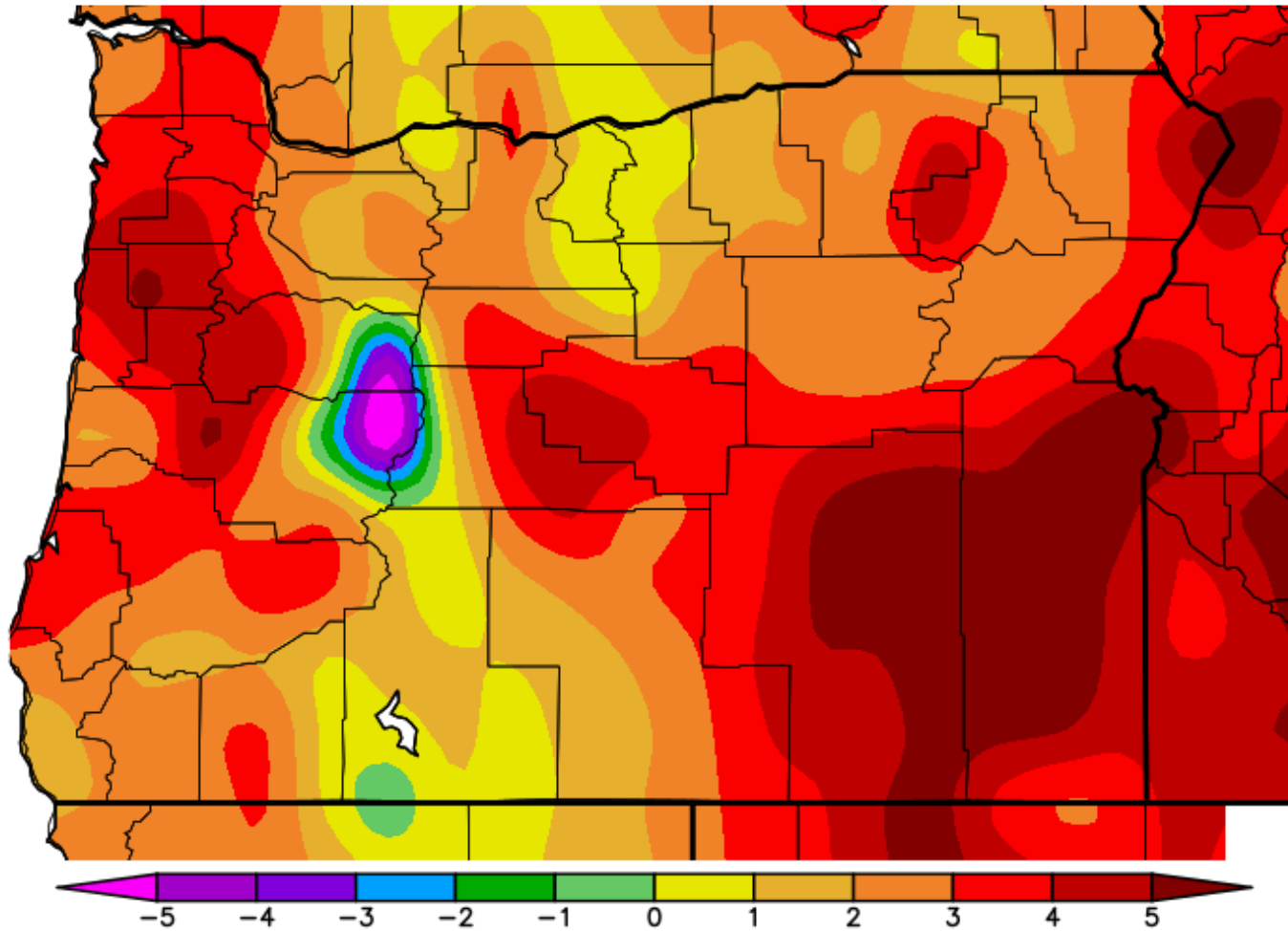


Precipitation Departure from Average (in.) 11/1/2021 – 11/14/2021



Generated 11/15/2021 at WRCC using provisional data.
NOAA Regional Climate Centers

Ave. Temperature dep from Ave (deg F)
11/1/2021 - 11/14/2021

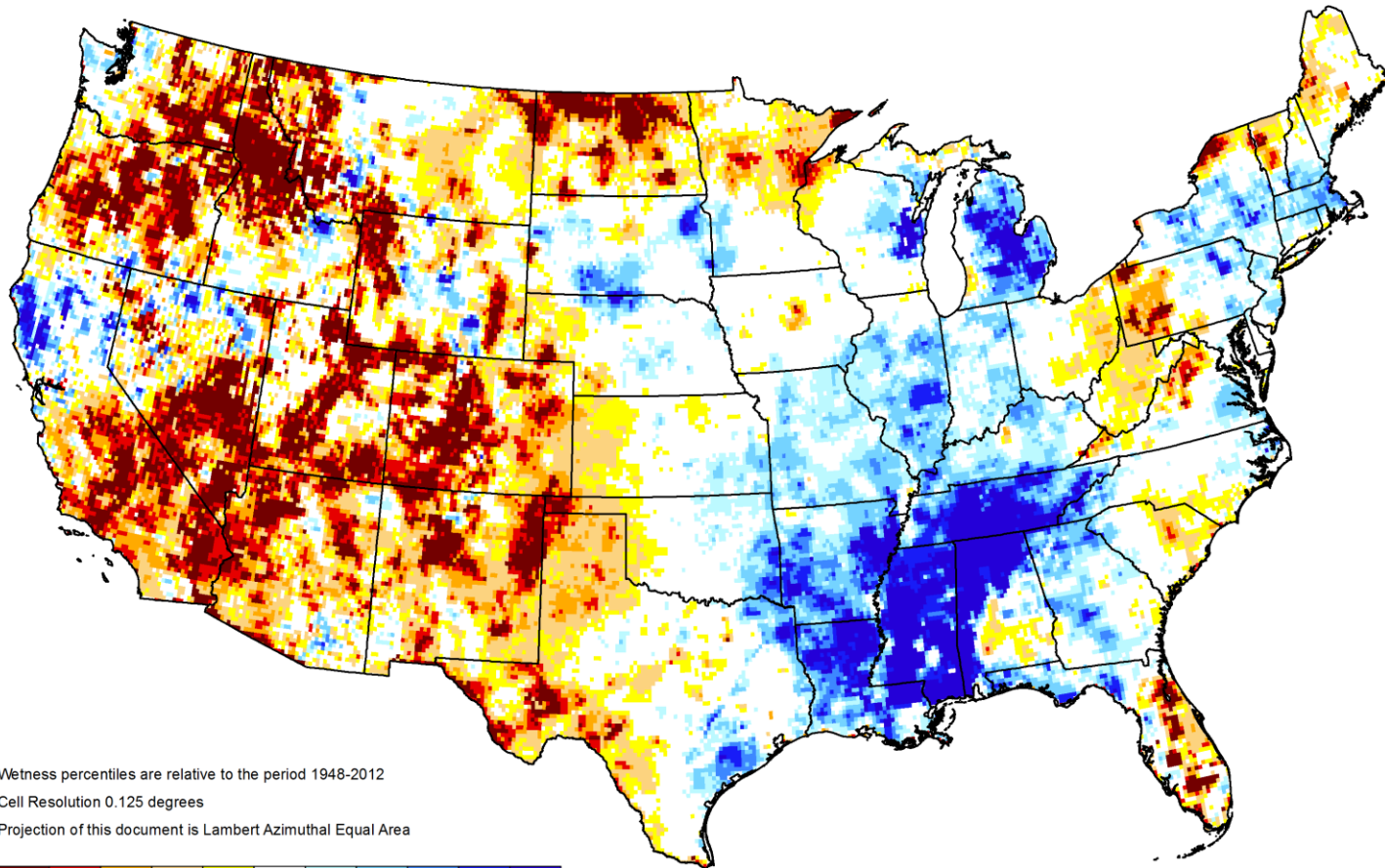


Generated 11/15/2021 at WRCC using provisional data.
NOAA Regional Climate Centers

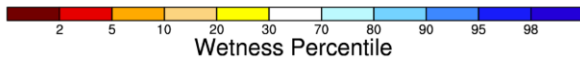


GRACE-Based Shallow Groundwater Drought Indicator

November 08, 2021



Wetness percentiles are relative to the period 1948-2012
Cell Resolution 0.125 degrees
Projection of this document is Lambert Azimuthal Equal Area

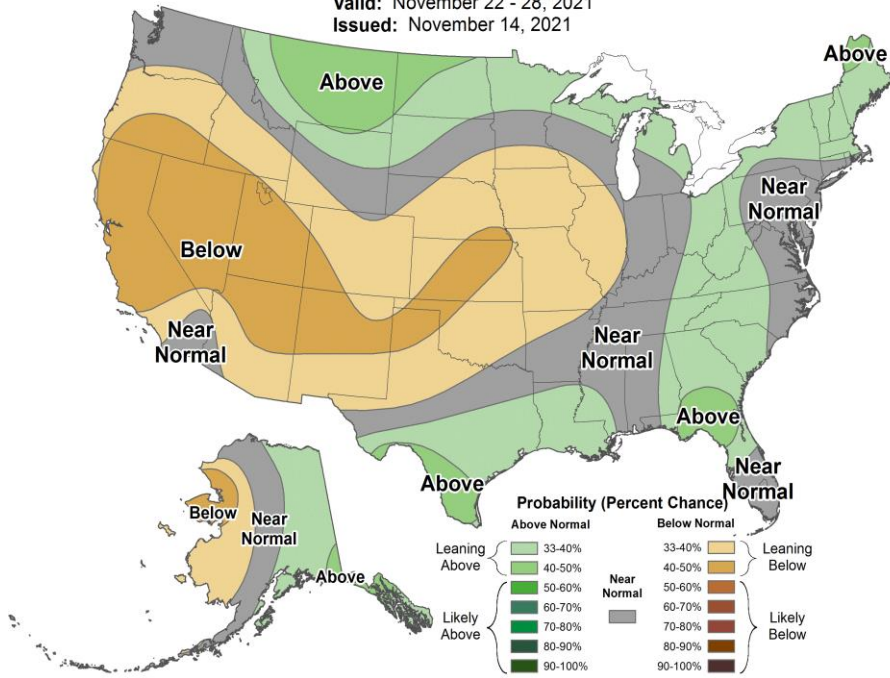


<https://nasagrace.unl.edu>



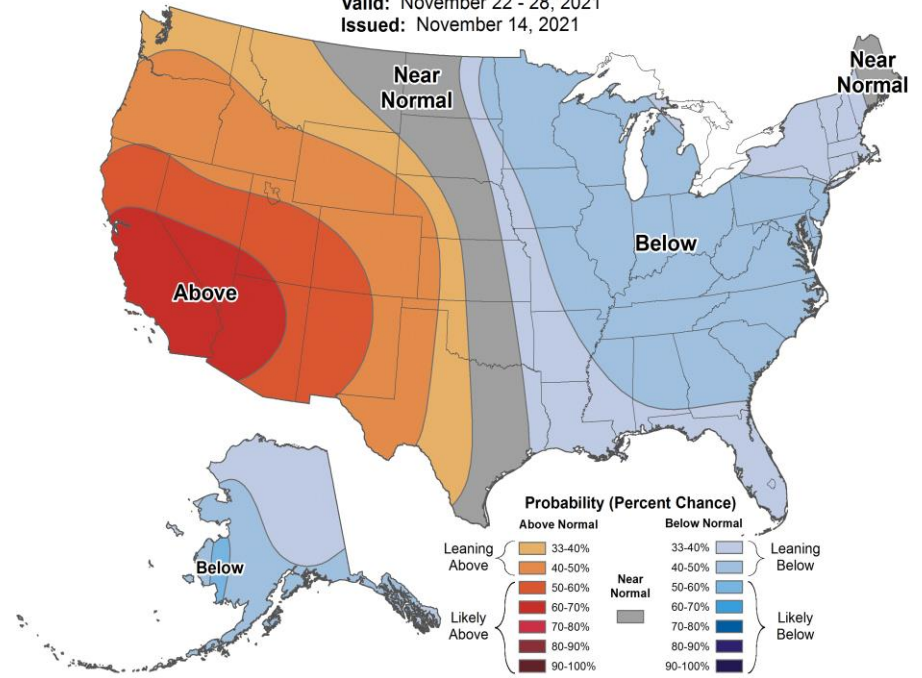
8-14 Day Precipitation Outlook

Valid: November 22 - 28, 2021
 Issued: November 14, 2021



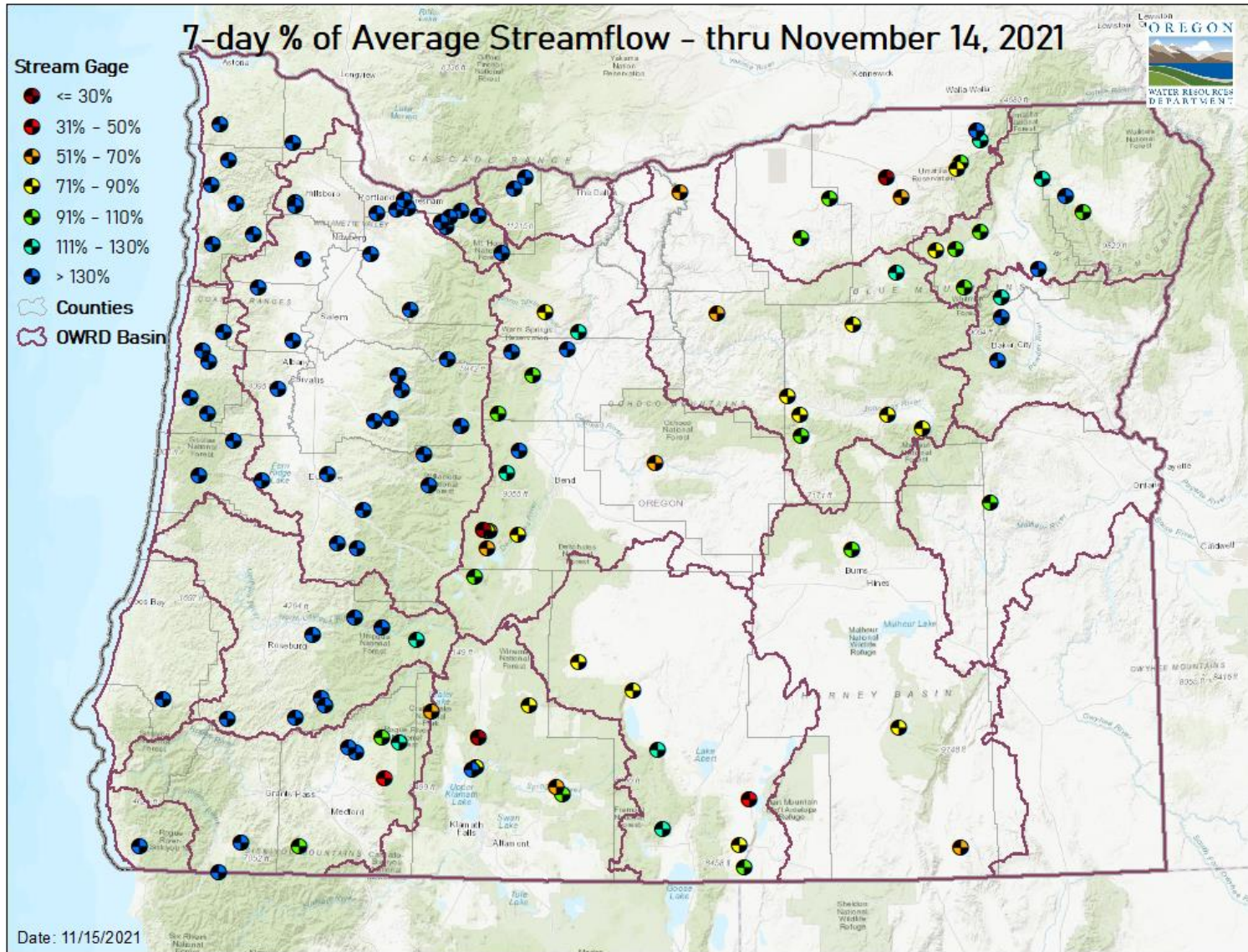
8-14 Day Temperature Outlook

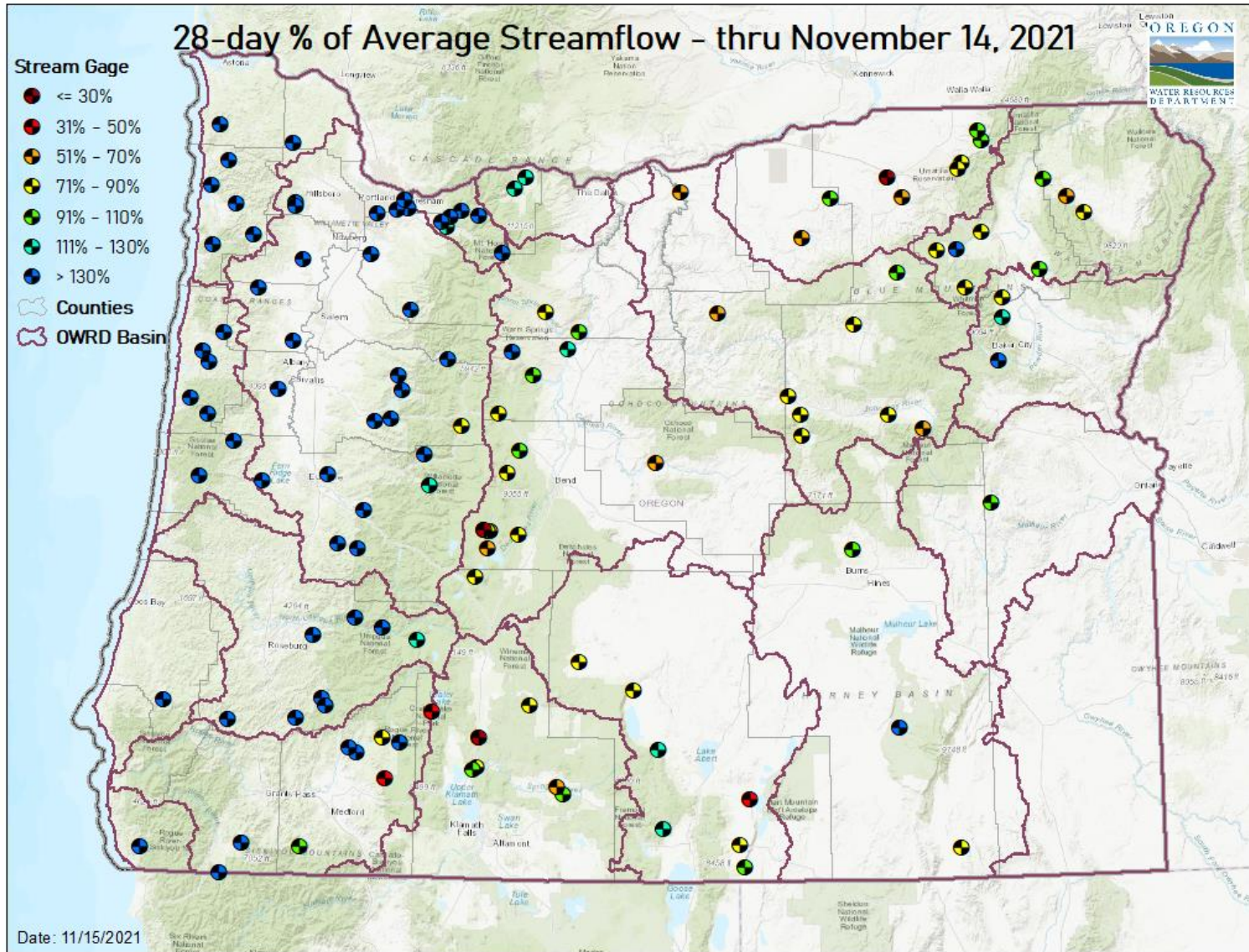
Valid: November 22 - 28, 2021
 Issued: November 14, 2021



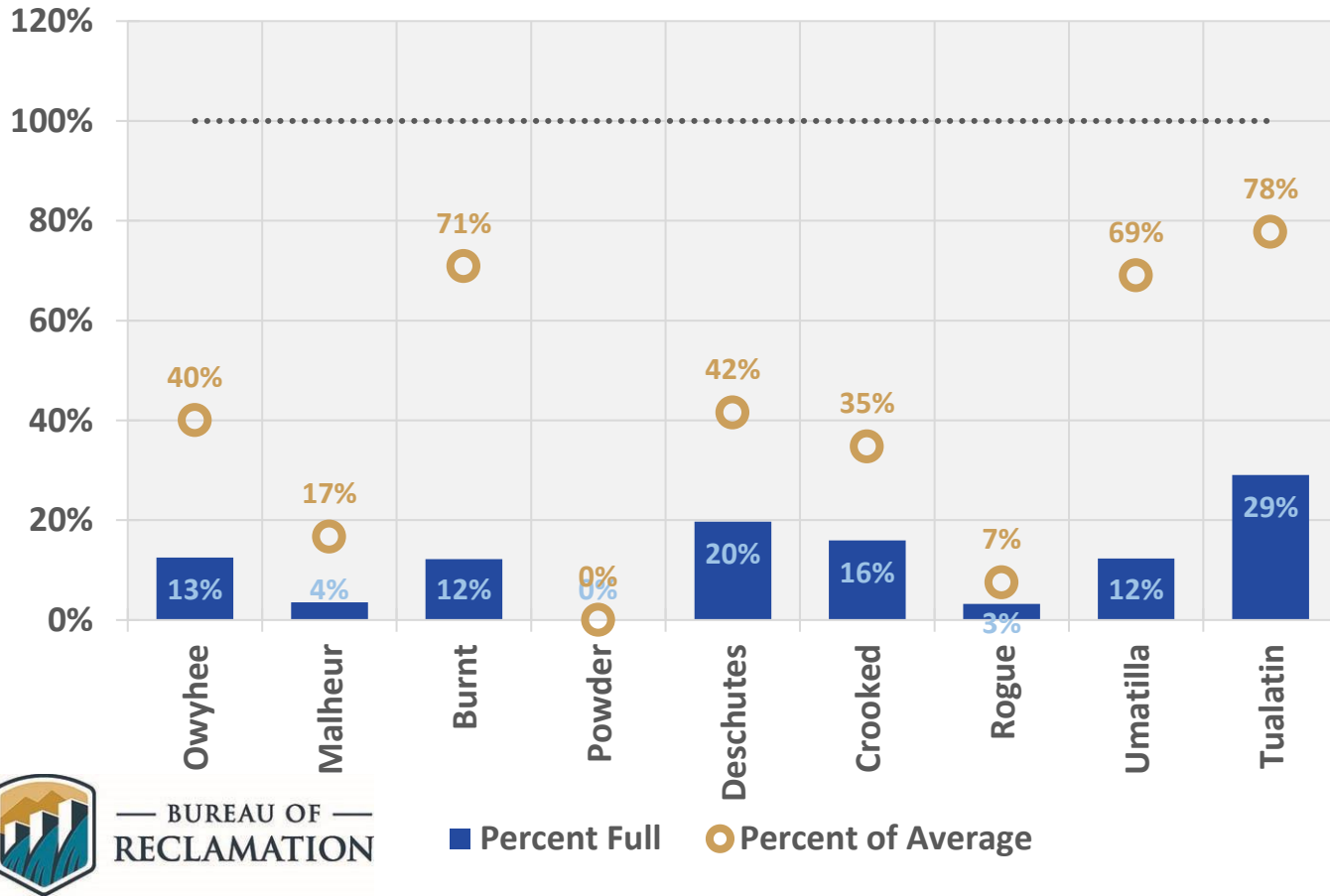
STREAMFLOW

7-DAY





November 9 Reservoir Storage



RESOURCES/REFERENCES

Please visit [Oregon Water Resources Department's drought information page](#) to learn about current drought conditions, assistance programs, and potential drought tools.

If you are interested in submitting local drought-related conditions and impacts, please visit the [drought impacts toolkit](#) to learn more. [Click here](#) to visit the map of condition monitoring observer reports.

Released every Thursday, the [US Drought Monitor](#) provides a weekly assessment of drought conditions. The USDM provides a [network infographic](#) which depicts the network of observers who gather and report information about conditions and drought impacts.

The [WestWide Drought Tracker](#) uses data from [PRISM](#) to provide easy access to fine-scale drought monitoring and climate products, such as the figures depicting climate conditions within this report.

The National Weather Service's [Climate Prediction Center](#) offers [weekly](#), [monthly](#), and [seasonal](#) climate outlooks illustrating the probabilities of temperatures and precipitation.

The [Regional Climate Centers](#) (RCC) working with NOAA partners, deliver climate services at national, regional, and state levels. Climate [anomaly maps of Oregon](#) are updated daily at around noon PST.

NASA's [Gravity Recovery and Climate Experiment](#) (GRACE) provide satellite-based observations of soil moisture conditions that are useful as drought indicators, helpful in describing current wet or dry soil conditions.

USGS [Water Watch](#) provides maps of real-time and average streamflow conditions at USGS sites throughout the state.

Reservoir storage "teacup" diagrams are offered by both the [US Bureau of Reclamation](#) and [US Army Corps of Engineers](#). The diagrams represent the level of fill in the reservoirs as both percent full and as a ratio of volume of water currently in the reservoir to the volume of water in the reservoir when it is full.

Oregon wildfire information can be found through [InciWeb](#) and the Oregon Department of Forestry's [Wildfire News](#), along with the [National Interagency Fire Center](#) which offers outlooks on the significant wildland fire potential.

Oregon Office of Emergency Management maintains a [hydrology/meteorology dashboard](#) which shows state and local drought declarations, as well as hosts many of the data sources to generate this report. Use the selection arrows at the bottom of your browser to navigate through the various sources.

US Department of Agriculture provides the [Weekly Weather and Crop Bulletin](#) as a vital source of information on US and global weather, climate, and agricultural developments, along with seasonally appropriate agrometeorological charts and tables. USDA's [Drought Programs and Assistance](#) offers links to programs and resources to help those struggling with persistent drought.