

# Oregon Water Conditions Report



February 12<sup>th</sup>, 2024

## HIGHLIGHTS

According to the [US Drought Monitor](#), over 16% of Oregon is experiencing moderate (D1) drought conditions. Over the past two weeks severe drought (D2) conditions have been removed from NC OR. Additionally, D1 has been reduced in W OR and expanded in NE OR.

[Snow water equivalent \(SWE\)](#) is currently measuring below to well above the historical median (min = 76%, max = 139%). Over the past two weeks, SWE has decreased over most basins. The exceptions are the Rogue-Umpqua and Lake County-Goose Lake basins, which remain unchanged and have experienced a minimal increase, respectively. For more information see [individual basin SWE plots](#).

Precipitation in January was above to well above average for most of the state with some exception in parts of NE Oregon where precipitation was just below average. [Over the last two weeks](#) precipitation was below to well below normal for much of the state. However, parts of NE, SE, SW and C OR were above to well above normal.

January temperatures were average to above average for much of the state with the exception of NC OR where temperatures were 1°F to 6°F below average. [Temperatures over the last two weeks](#) were above to well above average for most of the state with temperatures ranging from 2°F to 10°F above average.

[Recent soil moisture indicators](#) show a decrease across W OR and parts of C OR as result of recent below average precipitation.

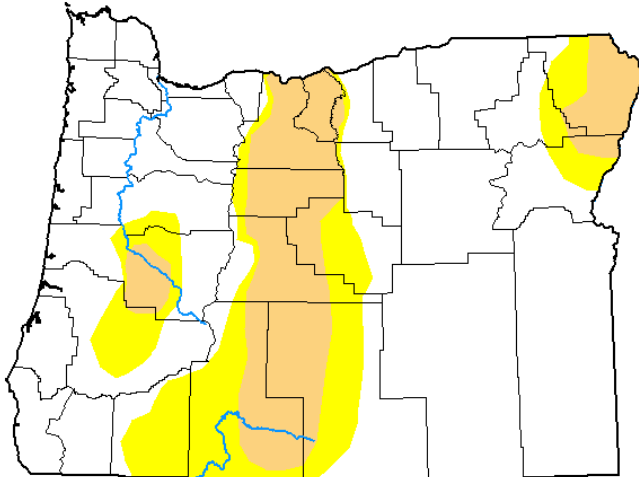
The [seasonal climate outlook](#) indicates probabilities leaning towards below average precipitation for most of the state and near normal conditions in S OR. The seasonal outlook for temperature indicates probabilities favoring above average temperatures statewide.

January streamflows were near to well above average for most of the state with the exception of SC OR. [Recent streamflow](#) conditions over the past seven days varied across Oregon. West of the Cascades, most streams were below average. East of the Cascades, there was more variability with streamflow ranging from well below to well above average.

Reservoir storage in many basins is currently above average. However, projects in the Deschutes and Rogue basins are measuring below average. See [USBR](#) (including [Klamath](#)) and [USACE](#) teacup diagrams for more information.

## U.S. Drought Monitor Oregon

**February 6, 2024**  
(Released Thursday, Feb. 8, 2024)  
Valid 7 a.m. EST



Drought Conditions (Percent Area)

|  | None  | D0-D4 | D1-D4 | D2-D4 | D3-D4 | D4   |
|--|-------|-------|-------|-------|-------|------|
| <b>Current</b>                                     | 68.29 | 31.71 | 16.34 | 0.00  | 0.00  | 0.00 |
| <b>Last Week</b><br><i>01-30-2024</i>              | 67.66 | 32.34 | 16.39 | 0.00  | 0.00  | 0.00 |
| <b>3 Months Ago</b><br><i>11-07-2023</i>           | 31.98 | 68.02 | 43.18 | 14.24 | 0.00  | 0.00 |
| <b>Start of Calendar Year</b><br><i>01-02-2024</i> | 47.04 | 52.96 | 18.85 | 3.12  | 0.00  | 0.00 |
| <b>Start of Water Year</b><br><i>09-26-2023</i>    | 24.13 | 75.87 | 54.18 | 27.06 | 6.40  | 0.00 |
| <b>One Year Ago</b><br><i>02-07-2023</i>           | 12.87 | 87.13 | 70.46 | 38.84 | 14.61 | 1.40 |

Intensity:

- None
- D0 Abnormally Dry
- D1 Moderate Drought
- D2 Severe Drought
- D3 Extreme Drought
- D4 Exceptional Drought

*The Drought Monitor focuses on broad-scale conditions. Local conditions may vary. For more information on the Drought Monitor, go to <https://droughtmonitor.unl.edu/About.aspx>*

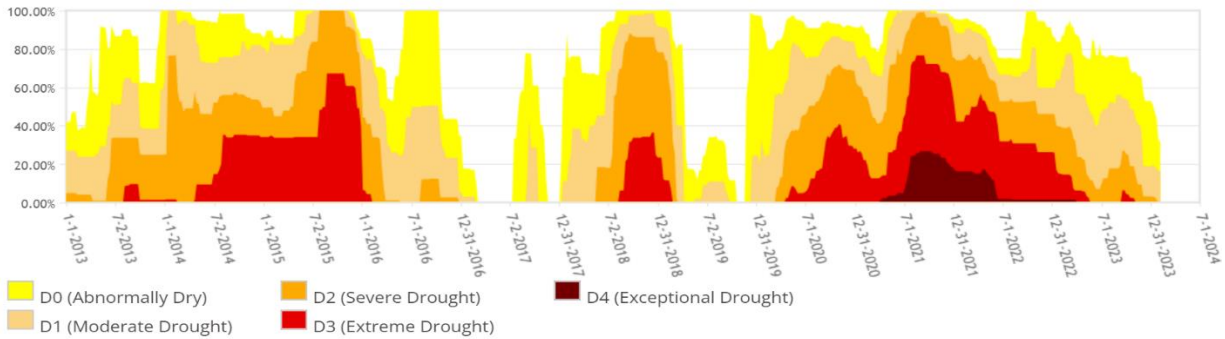
Author:

Deborah Bathke  
National Drought Mitigation Center



[droughtmonitor.unl.edu](https://droughtmonitor.unl.edu)

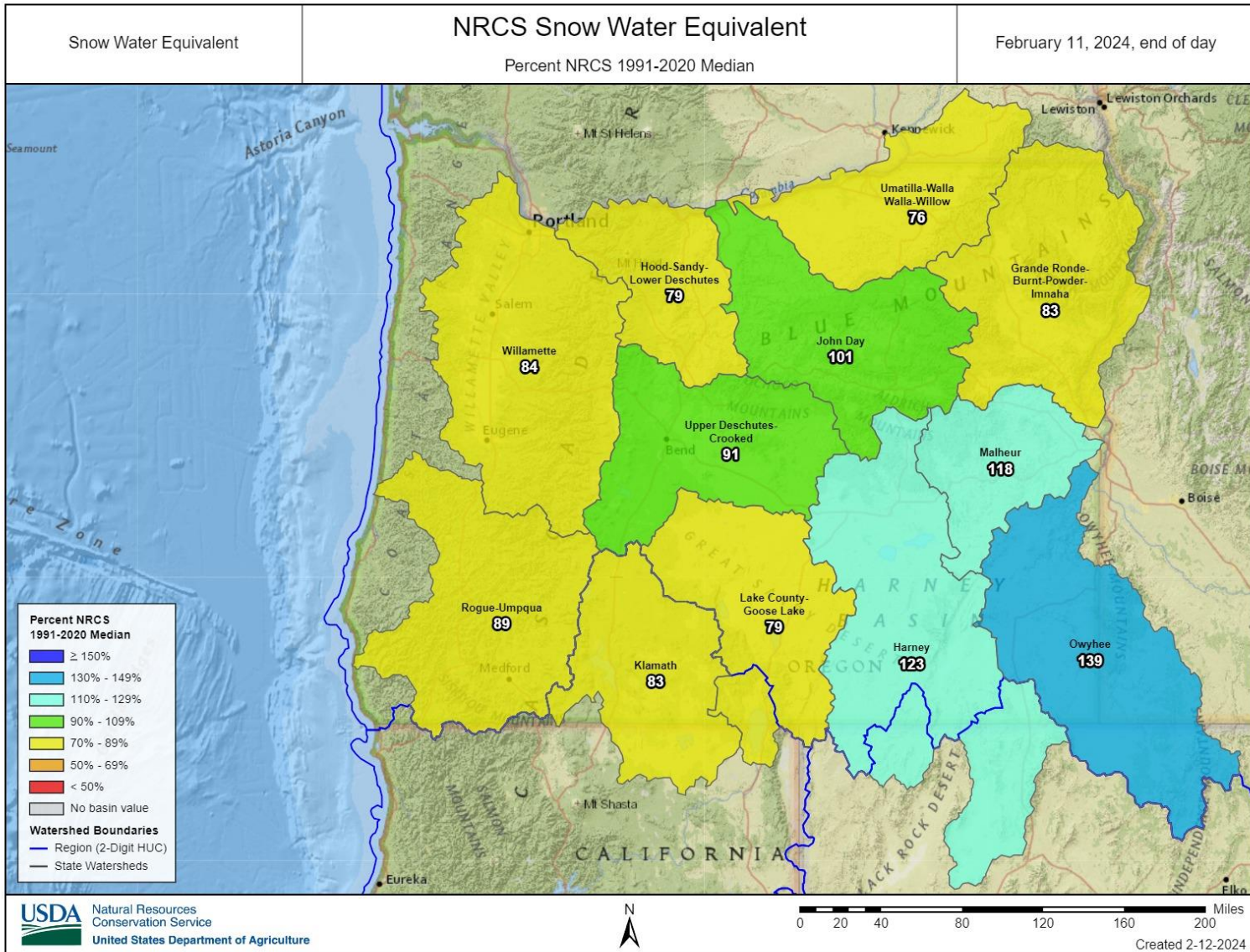
Oregon Percent Area in U.S. Drought Monitor Categories



From the U.S. Drought Monitor website, <https://droughtmonitor.unl.edu/DmData/TimeSeries.aspx>, 2-12-2024

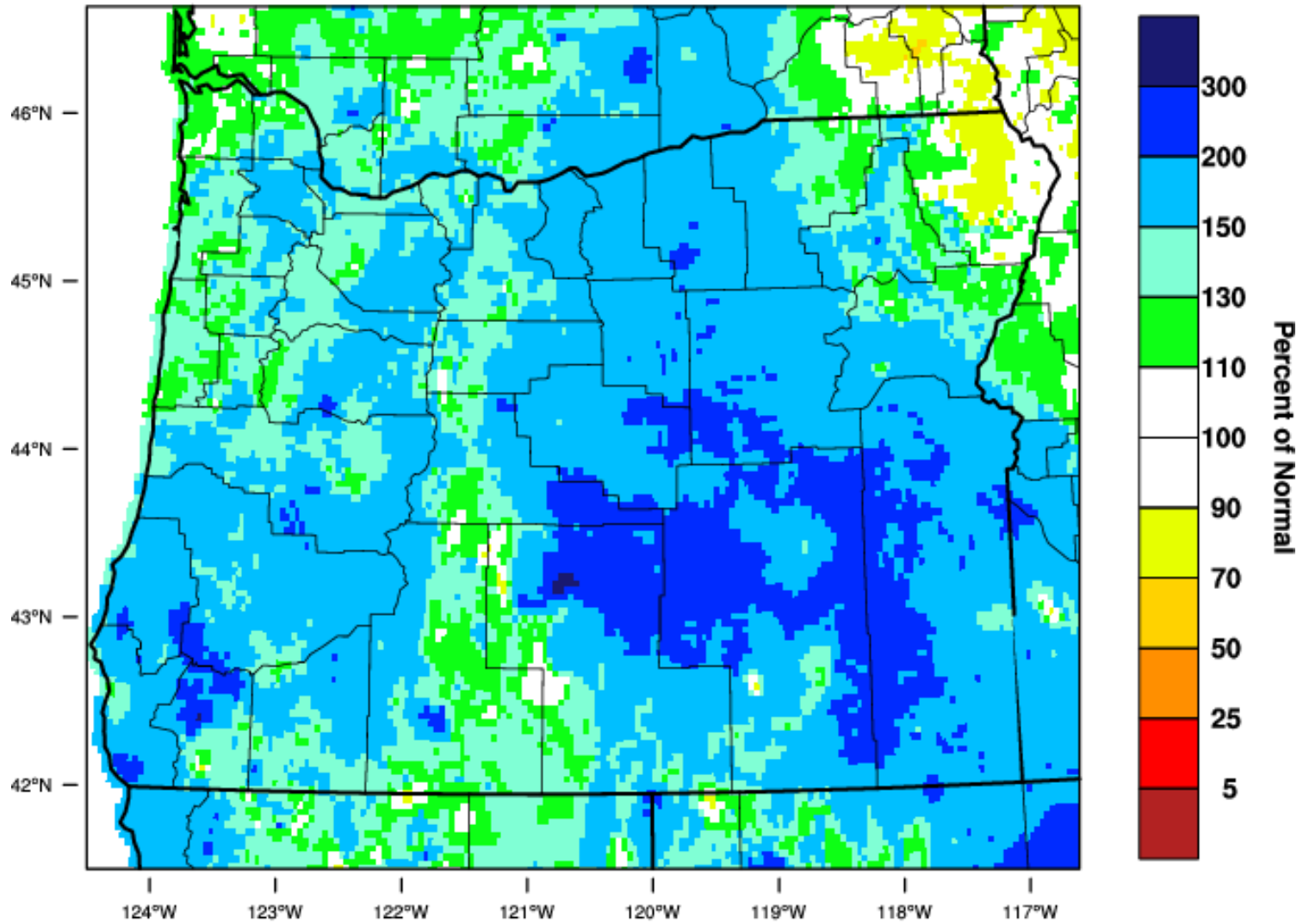


**CLIMATE CONDITIONS**  
**SNOW WATER EQUIVALENT**



### Oregon - Precipitation

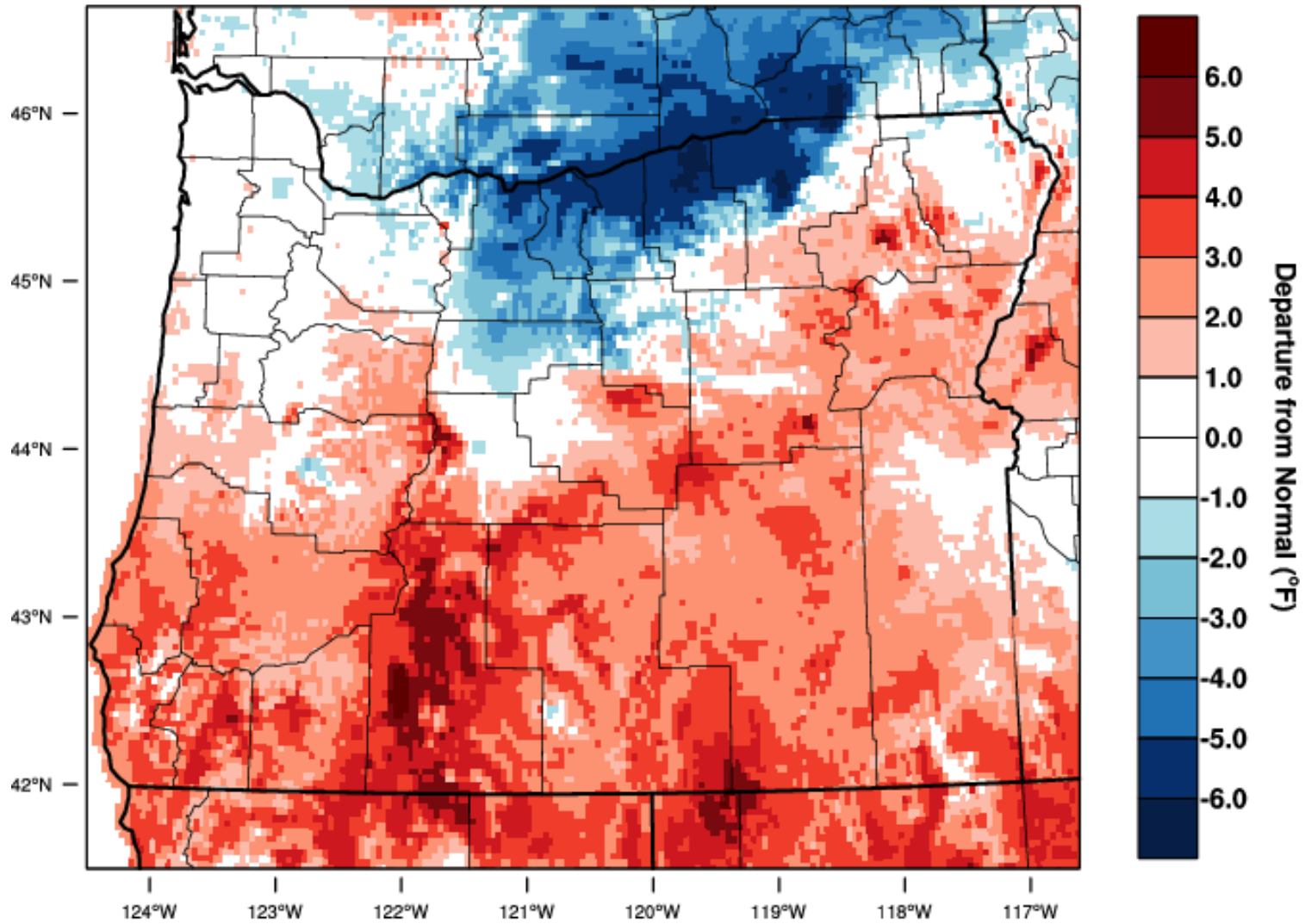
January 2024 Percent of 1981-2010 Normal



WestWide Drought Tracker, U Idaho/WRCC Data Source: PRISM (Prelim), created 11 FEB 2024

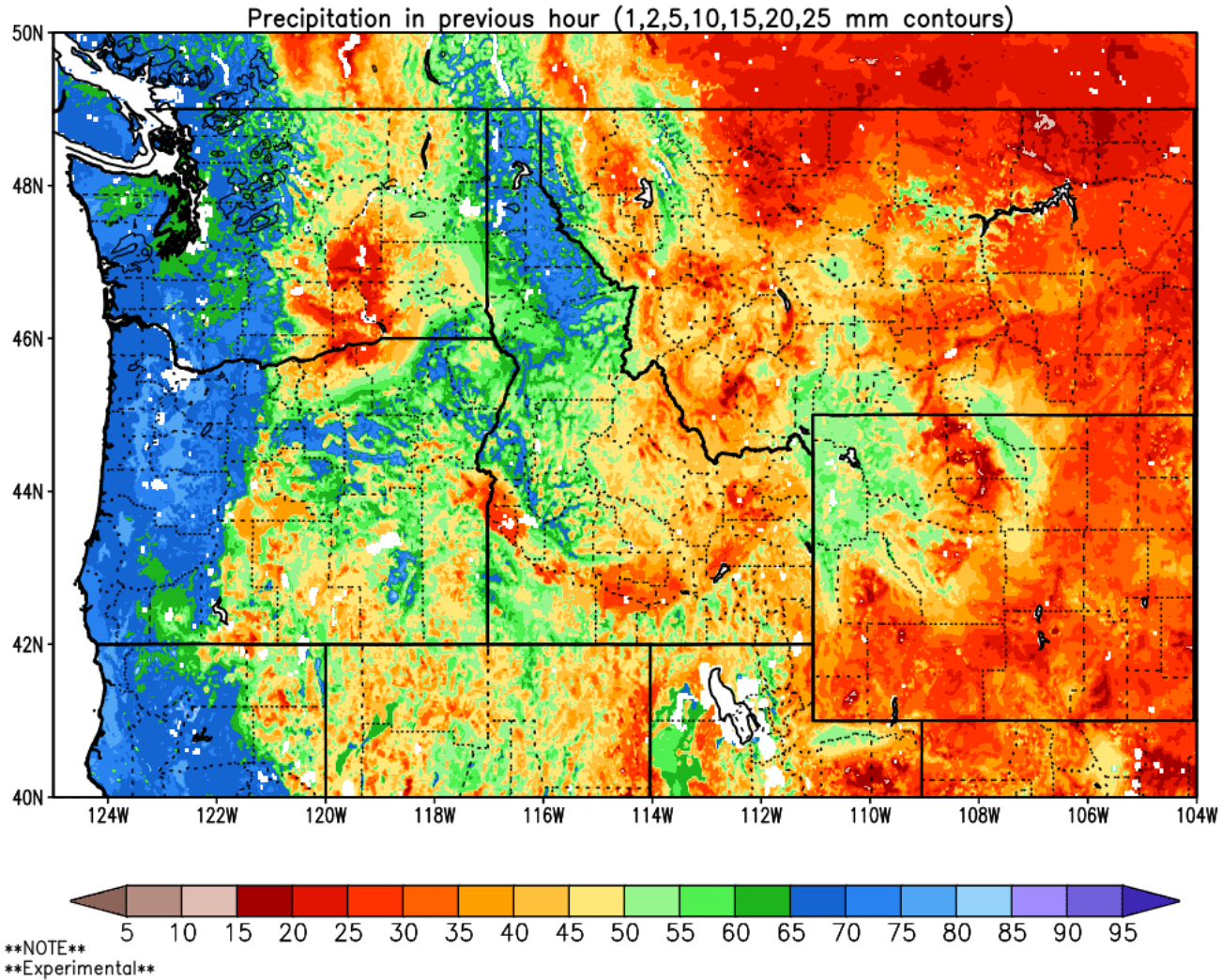
### Oregon - Mean Temperature

January 2024 Departure from 1981-2010 Normal



WestWide Drought Tracker, U Idaho/WRCC Data Source: PRISM (Prelim), created 11 FEB 2024

Column-Integrated Relative Soil Moisture (available water; %) valid 00z 12 Feb 2024

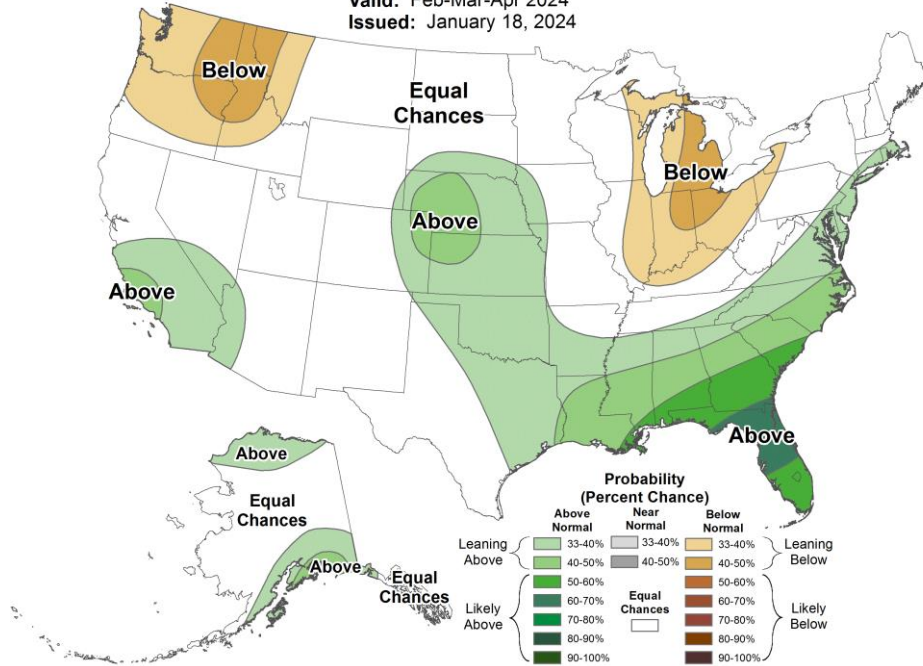




## Seasonal Precipitation Outlook



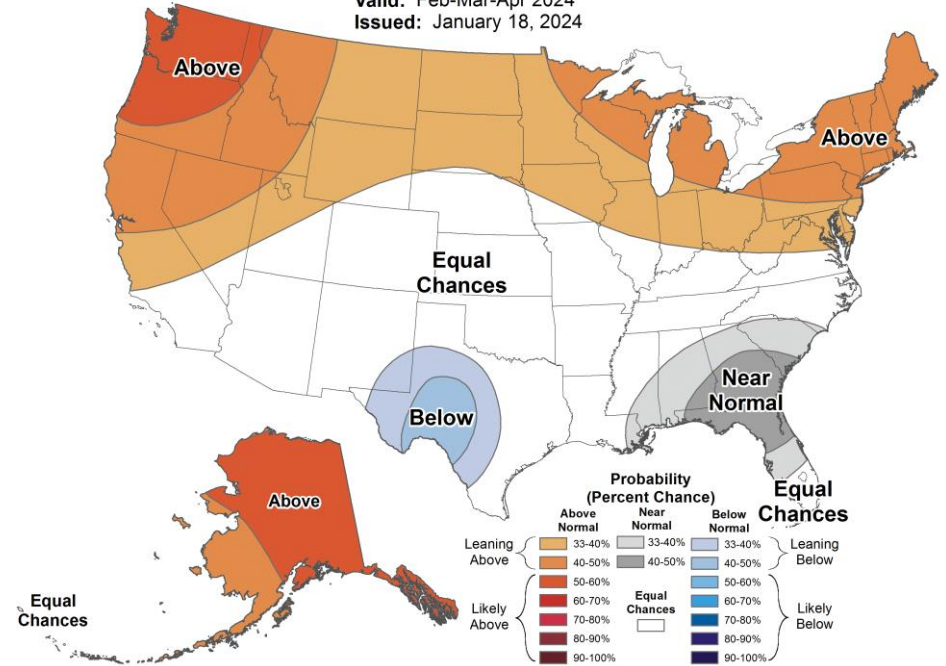
Valid: Feb-Mar-Apr 2024  
 Issued: January 18, 2024



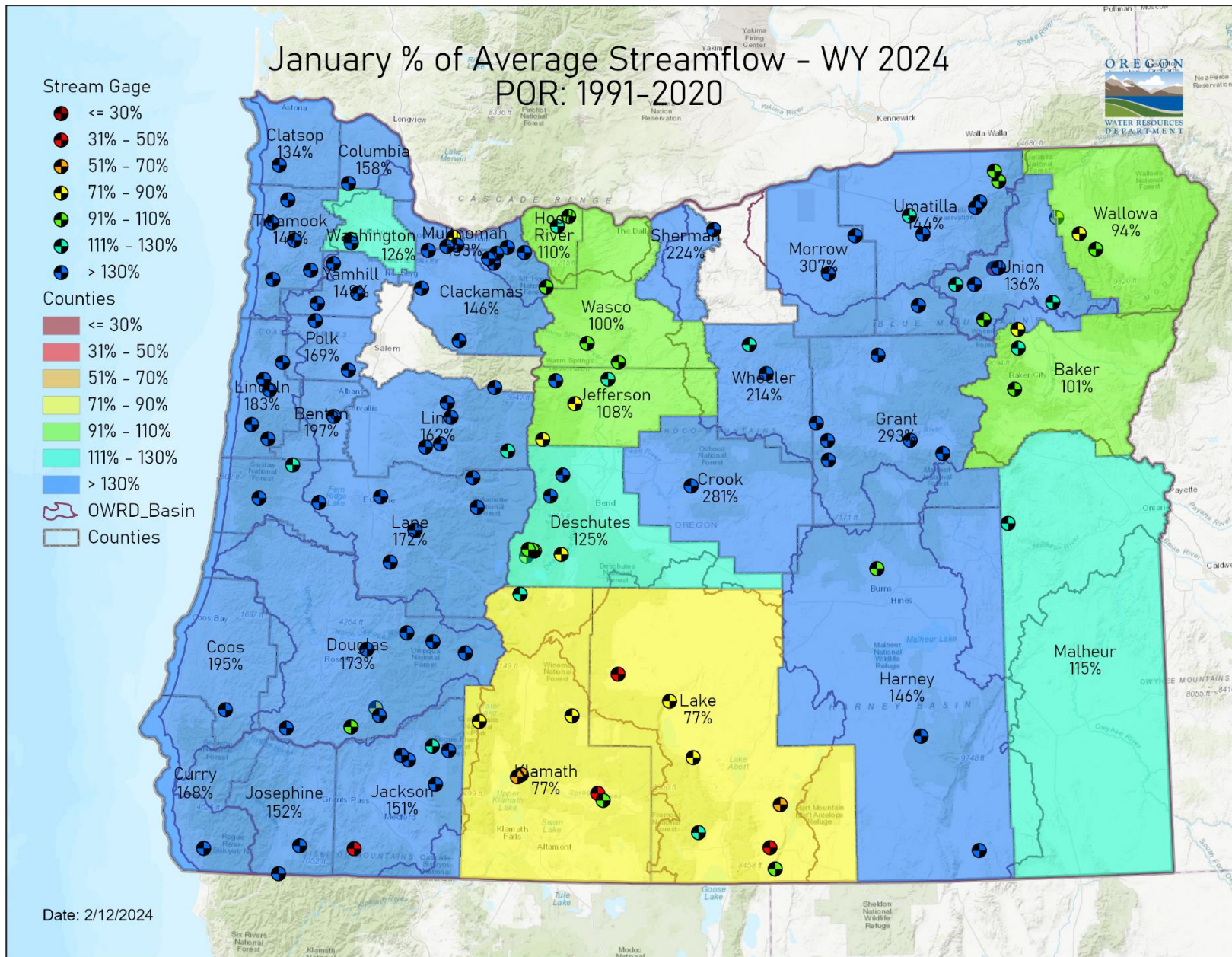
## Seasonal Temperature Outlook



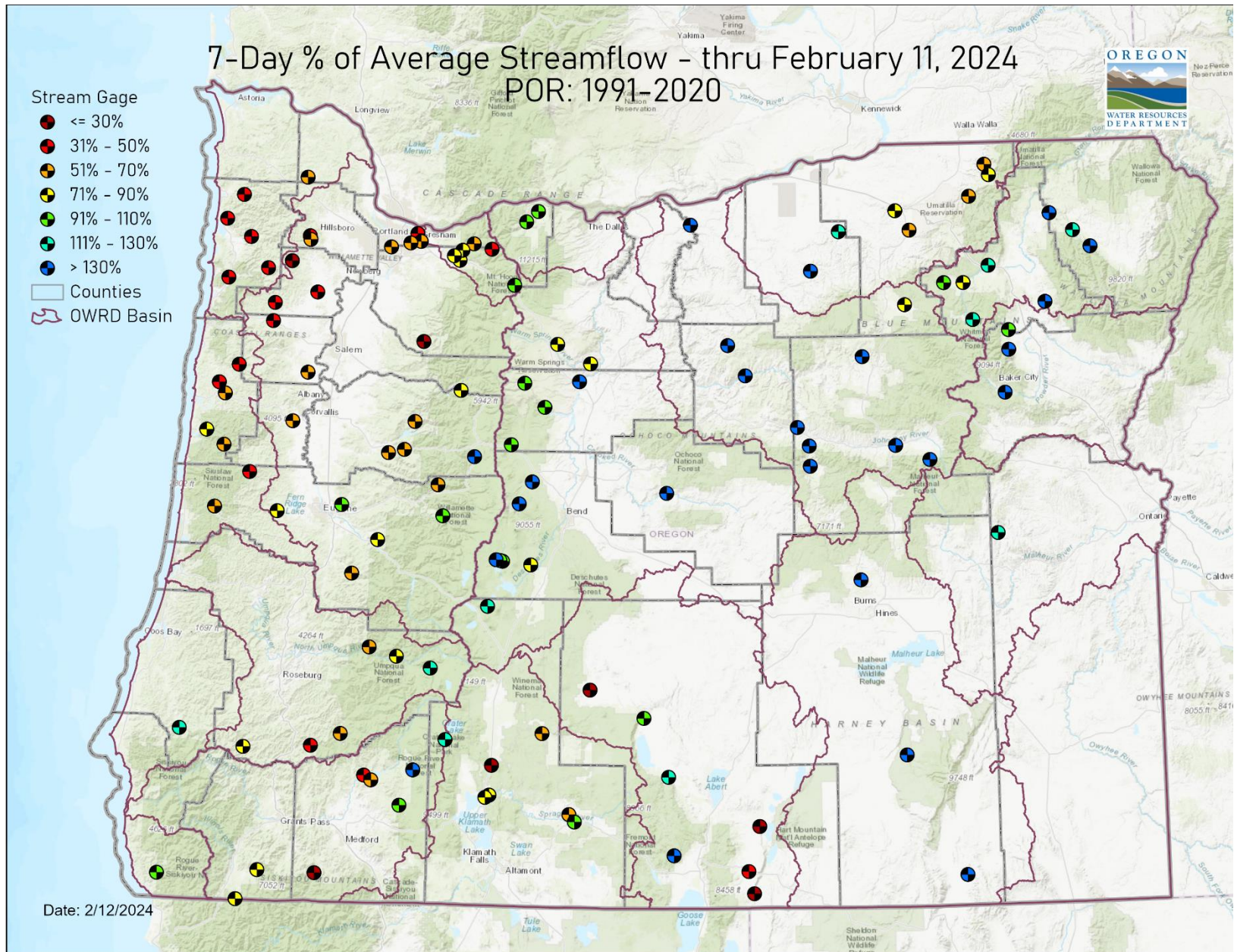
Valid: Feb-Mar-Apr 2024  
 Issued: January 18, 2024



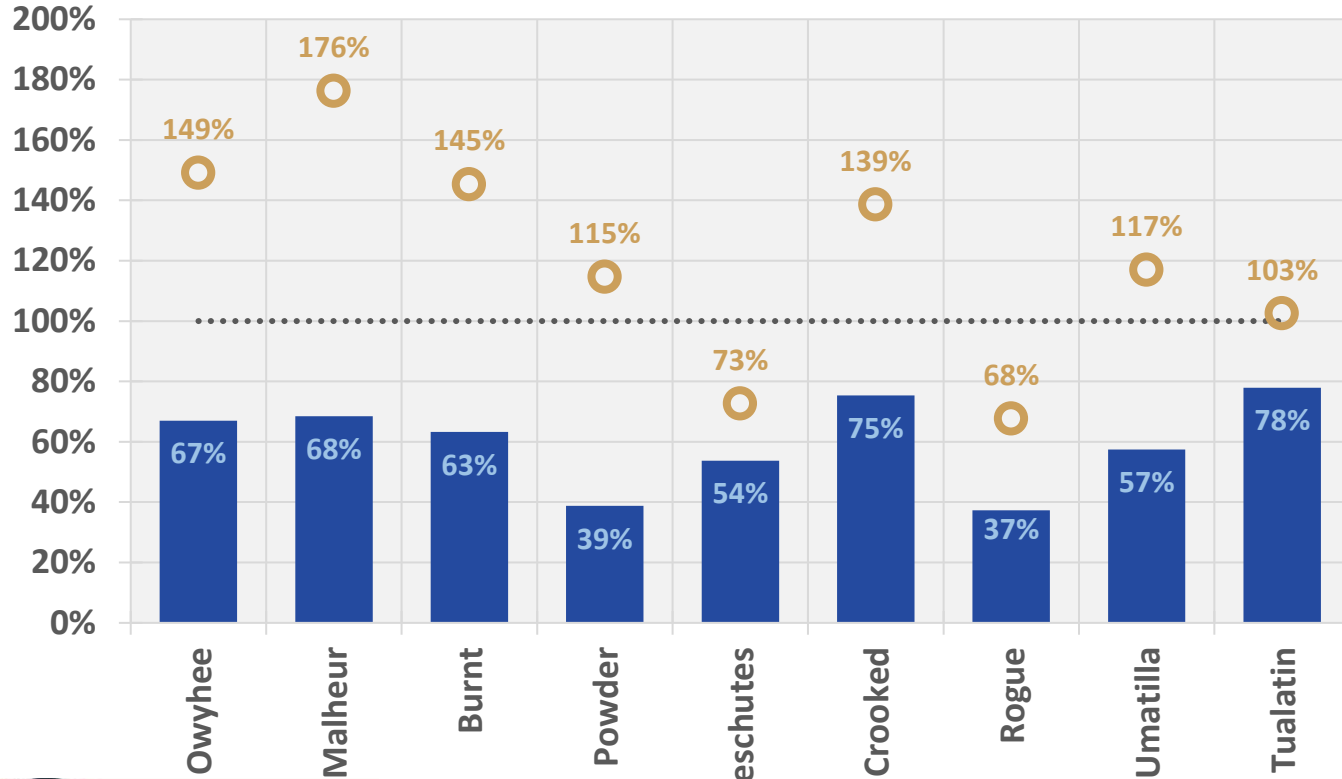
**STREAMFLOW**







## February 11 Reservoir Storage



BUREAU OF RECLAMATION

■ Percent Full

● Percent of Average

## RESOURCES/REFERENCES

Please visit [Oregon Water Resources Department's drought information page](#) to learn about current drought conditions, assistance programs, and potential drought tools.

If you are interested in submitting local drought-related conditions and impacts, please visit the [drought impacts toolkit](#) to learn more. [Click here](#) to visit the map of condition monitoring observer reports.

Released every Thursday, the [US Drought Monitor](#) provides a weekly assessment of drought conditions. The USDM provides a [network infographic](#) which depicts the network of observers who gather and report information about conditions and drought impacts.

The [WestWide Drought Tracker](#) uses data from [PRISM](#) to provide easy access to fine-scale drought monitoring and climate products, such as the figures depicting climate conditions within this report.

The National Weather Service's [Climate Prediction Center](#) offers [weekly](#), [monthly](#), and [seasonal](#) climate outlooks illustrating the probabilities of temperatures and precipitation.

The [Regional Climate Centers](#) (RCC) working with NOAA partners, deliver climate services at national, regional, and state levels. Climate [anomaly maps of Oregon](#) are updated daily at around noon PST.

NASA's [Gravity Recovery and Climate Experiment](#) (GRACE) provide satellite-based observations of soil moisture conditions that are useful as drought indicators, helpful in describing current wet or dry soil conditions.

USGS [Water Watch](#) provides maps of real-time and average streamflow conditions at USGS sites throughout the state.

Reservoir storage "teacup" diagrams are offered by both the [US Bureau of Reclamation](#) and [US Army Corps of Engineers](#). The diagrams represent the level of fill in the reservoirs as both percent full and as a ratio of volume of water currently in the reservoir to the volume of water in the reservoir when it is full.

Oregon wildfire information can be found through [InciWeb](#) and the Oregon Department of Forestry's [Wildfire News](#), along with the [National Interagency Fire Center](#) which offers outlooks on the significant wildland fire potential.

Oregon Office of Emergency Management maintains a [hydrology/meteorology dashboard](#) which shows state and local drought declarations, as well as hosts many of the data sources to generate this report. Use the selection arrows at the bottom of your browser to navigate through the various sources.

US Department of Agriculture provides the [Weekly Weather and Crop Bulletin](#) as a vital source of information on US and global weather, climate, and agricultural developments, along with seasonally appropriate agrometeorological charts and tables. USDA's [Drought Programs and Assistance](#) offers links to programs and resources to help those struggling with persistent drought.