

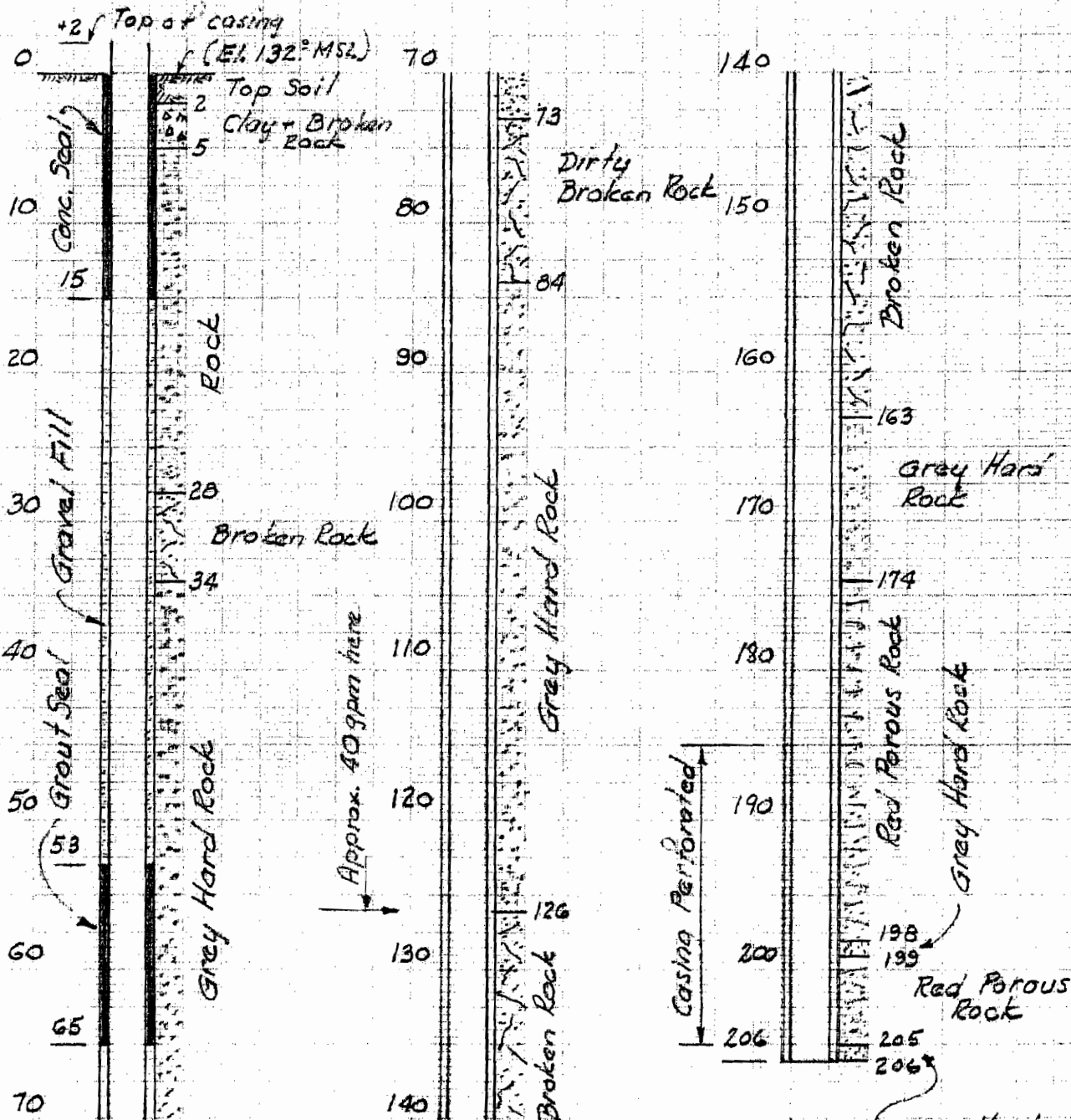
DRILLING LOG CLAC

State Eng. File No. G-1349

RNERGROVE WATER DIST.
WELL No. 1.

Drilled By: Haakon I. Bohmer
Drilling Started: 3/4/59
Drilling Completed: 4/22/59

Hole Size: 16"
Casing: 12", 0.33" wall
208' Installed

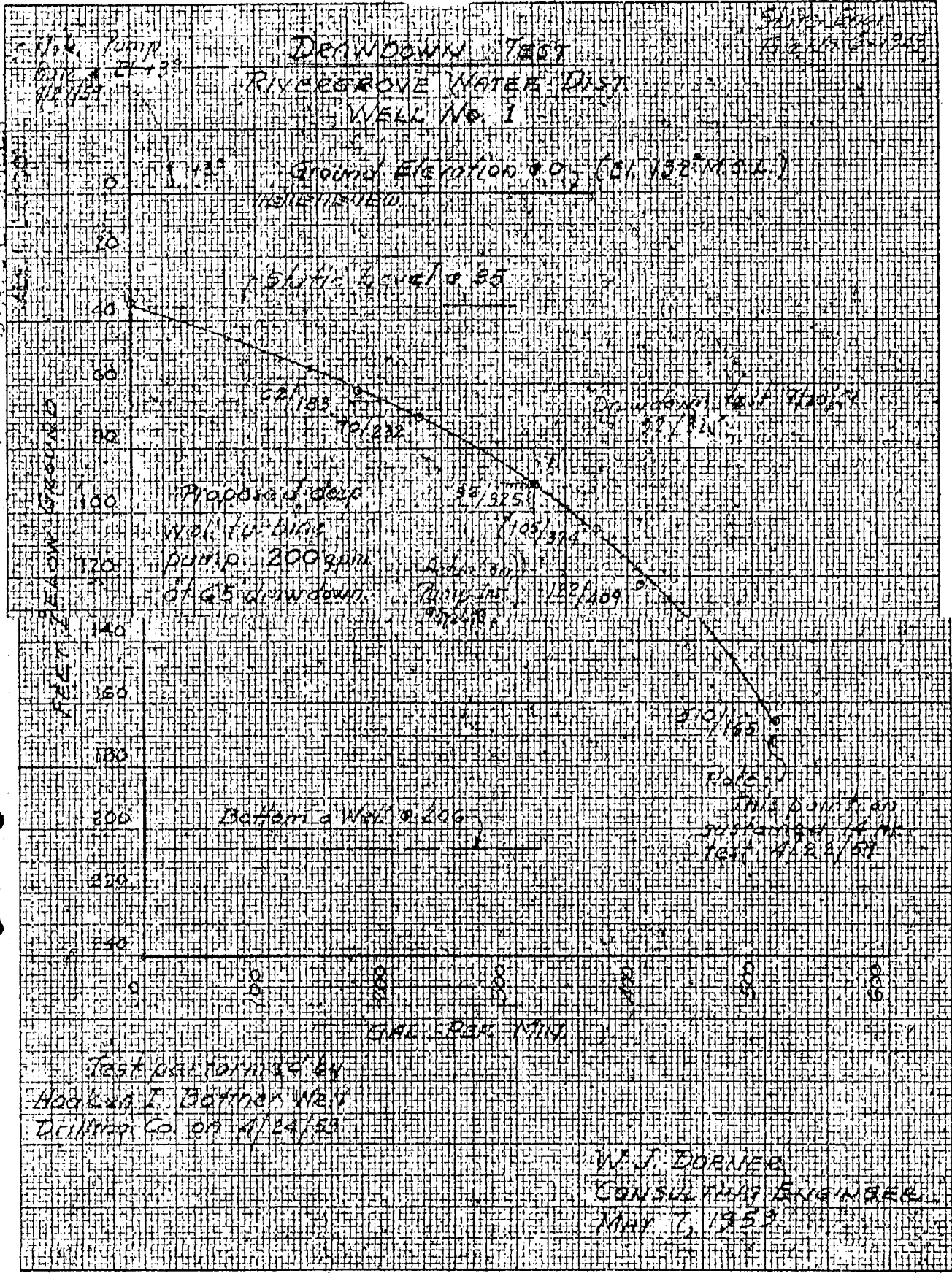


W. J. DORNER, CONS. ENGR. 5/7/59

RECEIVED
MAR 19 2003

Grey Hard Rock

RECEIVED
MAR 24 1961
STATE ENGINEER



ACUFFEL & ESSER CO., INC. NO. 258-12
1010 S. W. 4th Ave. Portland, Oreg.

TESTING & CONSULTATION RESEARCH
 CONSULTATION RESEARCH



LABORATORY CERTIFICATE

Charlton Laboratories

CHEMISTS — BACTERIOLOGISTS — ENGINEERS

2340 S. W. JEFFERSON ST. P.O. BOX 1048 PORTLAND 7, OREGON
 CAPITOL B-8663

MEMBERSHIP IN:
 AMERICAN CHEMICAL SOCIETY
 AMERICAN SOCIETY FOR TESTING MATERIALS
 AMERICAN SOCIETY FOR METALS
 AMERICAN WATER WORKS ASSOCIATION
 AMERICAN PUBLIC HEALTH ASSOCIATION
 AMERICAN SOCIETY OF CIVIL ENGINEERS
 AMERICAN SOCIETY OF MECHANICAL ENGINEERS
 AMERICAN ASSOCIATION OF CHEMISTS
 AMERICAN COUNCIL OF INDEPENDENT LABORATORIES
 AMERICAN ECONOMIC INSTITUTE
 SOCIETY OF AUTOMOTIVE ENGINEERS
 AMERICAN WELDING SOCIETY
 NATIONAL ASSOCIATION OF CHEMISTS
 AMERICAN ELECTROPLATERS' SOCIETY

Pg 3 of 3

TO: River Grove Water District
 18675 S. W. Pilkington Road
 Oswego, Oregon

LABORATORY NO. 56889

DATE: April 30, 1959

SUBJECT: WELL WATER FROM WELL #1

DATE RECEIVED: 4-22-59

CHEMICAL ANALYSIS

pH Value 6.95

PARTS PER MILLION

Total Solids (Residue on Evaporation)	168
Volatile Solids (Loss on Ignition)	24
Alkalinity (as CaCO ₃)	
Carbonate	0
Bicarbonate	91
Hardness (as CaCO ₃)	88.0
Iron (Fe)	0.57
Silica (SiO ₂)	57.2
Aluminum (Al)	1.2
Calcium (Ca)	21.5
Magnesium (Mg)	8.3
Sodium	6.2
Potassium (K)	3.0
Manganese (Mn)	0.0
Chloride (Cl)	2.9
Sulfate (SO ₄)	2.6
Nitrate (NO ₃)	0.00
Fluoride (F)	0.0

This water is classed as a slightly hard bicarbonate type. The iron is a little higher than the standard maximum of 0.3 for municipal waters. This water should be satisfactory for general domestic and most industrial uses if it meets bacteriological standards.

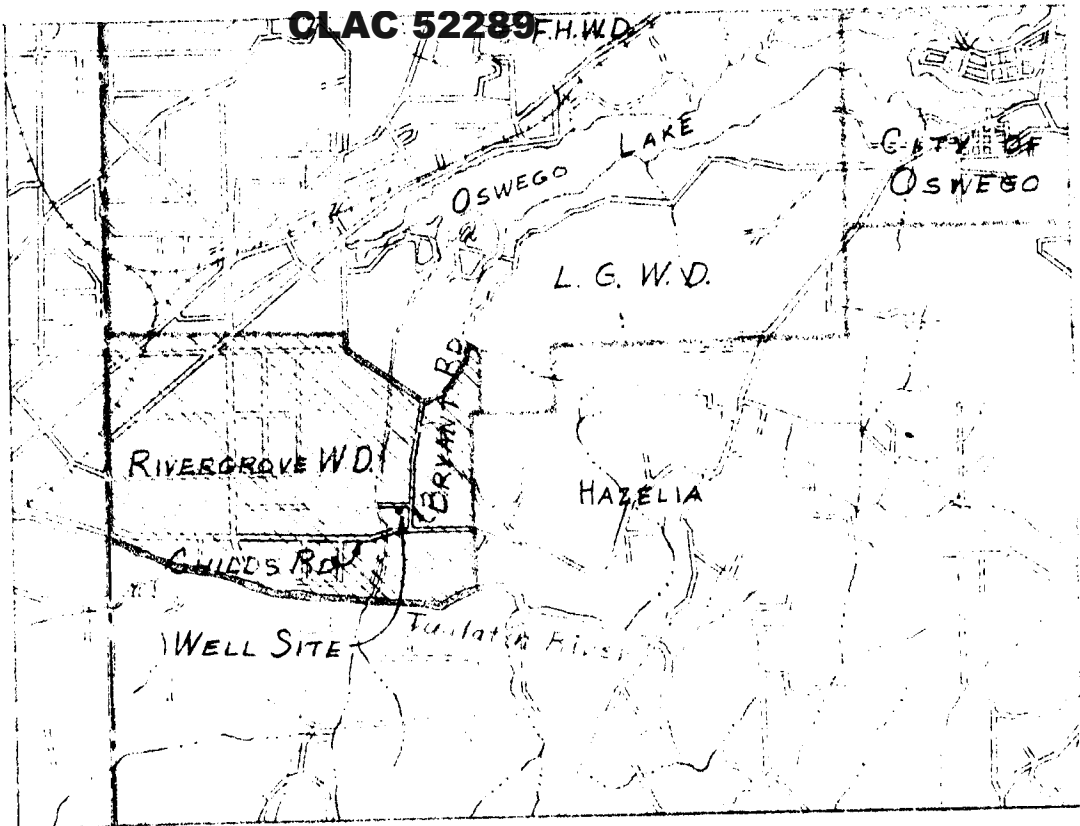
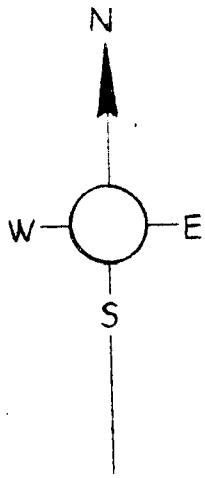


JMB:ak
 2c-W.J. Dorner
 1c-Kenneth B. Carls

CHARLTON LABORATORIES, INC.

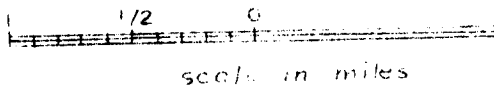
By

CLAC 52289 F.H.W.D.



17

VICINITY MAP



W. J. Dornier

RIVERGROVE WATER DISTRICT

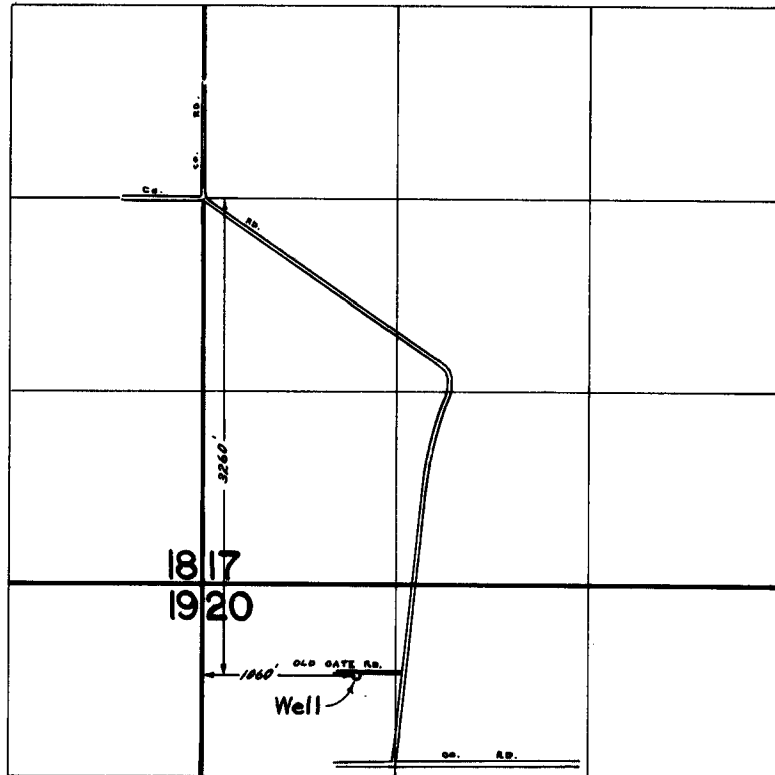
WELL SITE & LOCATION

W. J. DORNER
CONS. ENGR.

DEC. 22, 1958
Dwg No. 330

MAP
NTY, OREGON
IE, W.A.
00'

T.2S. R.I.E. W.M.



FINAL PROOF SURVEY
UNDER

Application No. G-1349 Permit No. G-1196
IN NAME OF

RIVERGROVE WATER DISTRICT

Surveyed SEPT. 30, 1974, by L. E. GOULD