

JAN 24 1990

DOUG 5256 DOUG

265/3w/11ab

STATE OF OREGON WATER WELL REPORT (as required by ORS 537.765)

WATER RESOURCES DEPT. SALEM, OREGON 5256

(START CARD) # 15596

(1) OWNER: Name Idlelyld Park Lodge Address P.O. Box 101 City Idlelyld Park State OR Zip 97447

(2) TYPE OF WORK: [X] New Well [ ] Deepen [ ] Recondition [ ] Abandon

(3) DRILL METHOD: [X] Rotary Air [ ] Rotary Mud [ ] Cable [ ] Other

(4) PROPOSED USE: [ ] Domestic [X] Community [ ] Industrial [ ] Irrigation [ ] Thermal [ ] Injection [ ] Other

(5) BORE HOLE CONSTRUCTION: Special Construction approval Yes No Depth of Completed Well 163 ft. Explosives used [ ] [X] Type Amount

Table with columns: HOLE Diameter, From, To, SEAL Material, From, To, Amount sacks or pounds. Row 1: 9 7/8, 0, 29, Cement, 0, 29, 7 sacks. Row 2: 6, 29, 163.

How was seal placed: Method [ ] A [ ] B [X] C [ ] D [ ] E Backfill placed from ft. to ft. Material Gravel placed from ft. to ft. Size of gravel

(6) CASING/LINER: Table with columns: Diameter, From, To, Gauge, Steel, Plastic, Welded, Threaded. Casing: 6, +1, 29, .250, [X], [ ], [X], [ ]. Liner: 4, 3, 163, 160, [ ], [X], [ ], [ ].

Final location of shoe(s) 29 ft.

(7) PERFORATIONS/SCREENS: [X] Perforations Method saw cut [ ] Screens Type Material

Table with columns: From, To, Slot size, Number, Diameter, Tele/pipe size, Casing, Liner. Row 1: 40, 163, 1/8x5, 124, 4, [ ], [X].

(8) WELL TESTS: Minimum testing time is 1 hour [ ] Pump [ ] Bailer [X] Air [ ] Flowing Artesian Yield gal/min Drawdown Drill stem at Time

Temperature of water 51 Depth Artesian Flow Found Was a water analysis done? [ ] Yes [ ] No By whom Did any strata contain water not suitable for intended use? [ ] Too little [ ] Salty [ ] Muddy [ ] Odor [ ] Colored [ ] Other Depth of strata:

(9) LOCATION OF WELL by legal description: County Douglas Latitude Longitude Township 26 N or S, Range 3 E or W, WM. Section 11 NW 1/4 NE 1/4 Tax Lot 200 Lot Block Subdivision Street Address of Well (or nearest address) Idlelyld Park Lodge Idlelyld Park, OR 97447

(10) STATIC WATER LEVEL: 23 ft. below land surface. Date 1/4/90 Artesian pressure lb. per square inch. Date

(11) WATER BEARING ZONES: Table with columns: From, To, Estimated Flow Rate, SWL. Row 1: 53, 54, 7, 23.

(12) WELL LOG: Table with columns: Material, From, To, SWL. Row 1: Brown clay, 0, 11. Row 2: Brown clay/med. boulders, 11, 24. Row 3: Blue claystone, 24, 92, 23. Row 4: Black claystone, 92, 96, 23. Row 5: Blue claystone, 96, 141, 23. Row 6: Green basalt, 141, 152, 23. Row 7: Blue/green basalt, 152, 163, 23.

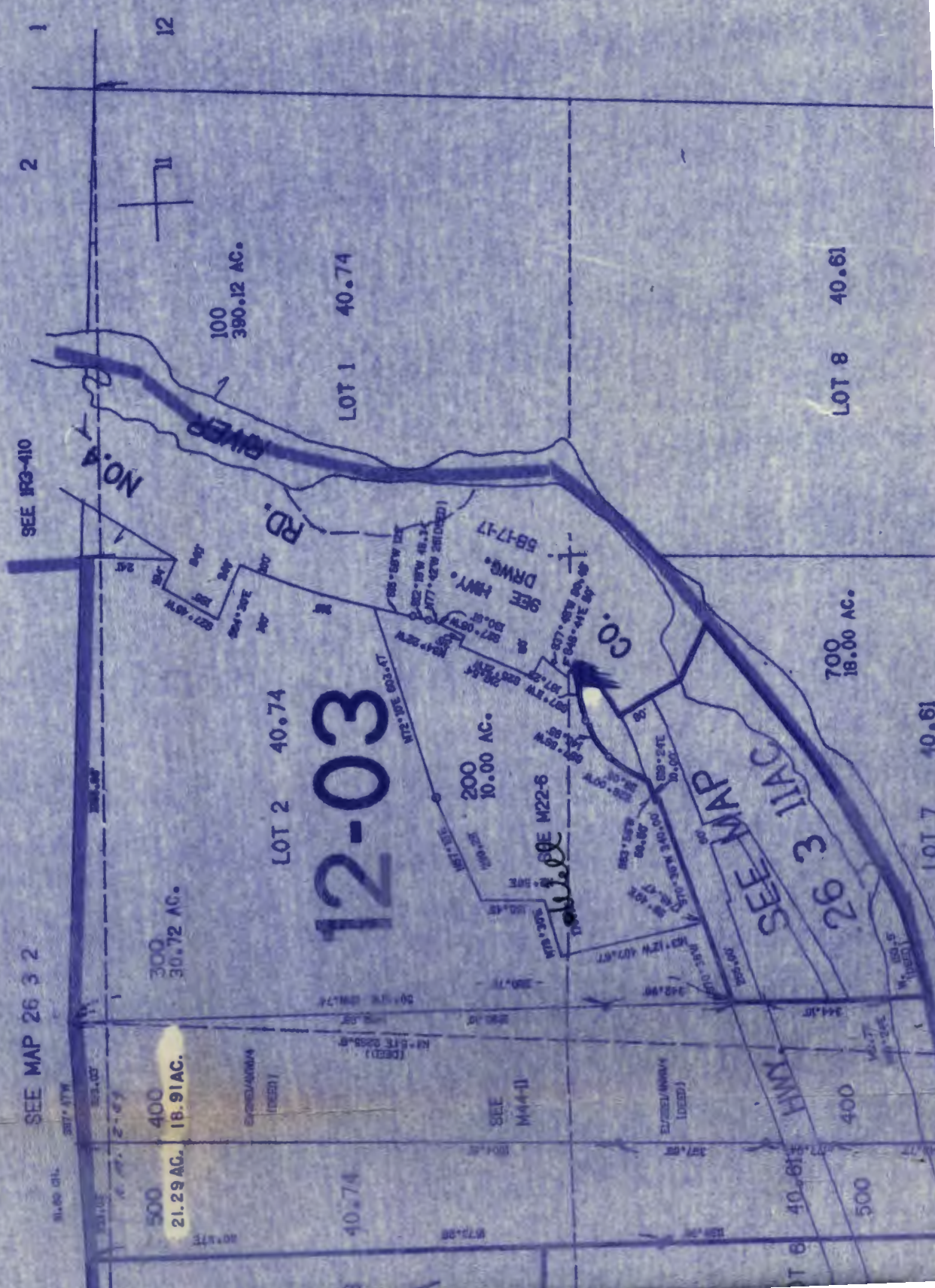
Date started 1/2/90 Completed 1/4/90

(unbonded) Water Well Constructor Certification: I certify that the work I performed on the construction, alteration, or abandonment of this well is in compliance with Oregon well construction standards. Materials used and information reported above are true to my best knowledge and belief. Signed Date WWC Number

(bonded) Water Well Constructor Certification: I accept responsibility for the construction, alteration, or abandonment work performed on this well during the construction dates reported above. all work performed during this time is in compliance with Oregon well construction standards. This report is true to the best of my knowledge and belief. Signed Date WWC Number 1284

SECTION 11 T.26S. R.3W. W.M.  
DOUGLAS COUNTY

1"=400'



12-03

LOT 2 40.74

LOT 1 40.74

LOT 8 40.61

LOT 7 40.61

700 18.00 AC.

300 30.72 AC.

400 18.91 AC.

500 21.29 AC.

200 10.00 AC.

100 390.12 AC.

SEE MAP 26 3 2

SEE IR3-110

SEE M44-11

SEE M22-6

SEE HWY. DRWG. 58-17-17

SEE MAP 26 3 11AC

SEE IR3-111

SEE IR3-112

SEE IR3-113

SEE IR3-114

SEE IR3-115

SEE IR3-116

SEE IR3-117

SEE IR3-118

SEE IR3-119

SEE IR3-120

SEE IR3-121

SEE IR3-122

SEE IR3-123

SEE IR3-124

SEE IR3-125

SEE IR3-126

SEE IR3-127

SEE IR3-128

SEE IR3-129

SEE IR3-130

SEE IR3-131

SEE IR3-132

SEE IR3-133

SEE IR3-134

SEE IR3-135

SEE IR3-136

SEE IR3-137

SEE IR3-138

SEE IR3-139

SEE IR3-140

SEE IR3-141

SEE IR3-142

SEE IR3-143

SEE IR3-144

SEE IR3-145

SEE IR3-146

SEE IR3-147

SEE IR3-148

SEE IR3-149

SEE IR3-150

SEE IR3-151

SEE IR3-152

SEE IR3-153

SEE IR3-154

SEE IR3-155

SEE IR3-156

SEE IR3-157

SEE IR3-158

SEE IR3-159

SEE IR3-160

SEE IR3-161

SEE IR3-162

SEE IR3-163

SEE IR3-164

SEE IR3-165

SEE IR3-166

SEE IR3-167

SEE IR3-168

SEE IR3-169

SEE IR3-170

SEE IR3-171

SEE IR3-172

SEE IR3-173

SEE IR3-174

SEE IR3-175

SEE IR3-176

SEE IR3-177

SEE IR3-178

SEE IR3-179

SEE IR3-180

SEE IR3-181

SEE IR3-182

SEE IR3-183

SEE IR3-184

SEE IR3-185

SEE IR3-186

SEE IR3-187

SEE IR3-188

SEE IR3-189

SEE IR3-190

SEE IR3-191

SEE IR3-192

SEE IR3-193

SEE IR3-194

SEE IR3-195

SEE IR3-196

SEE IR3-197

SEE IR3-198

SEE IR3-199

SEE IR3-200