



# GILL 50322

Preliminary Geologic Log - Allred Well

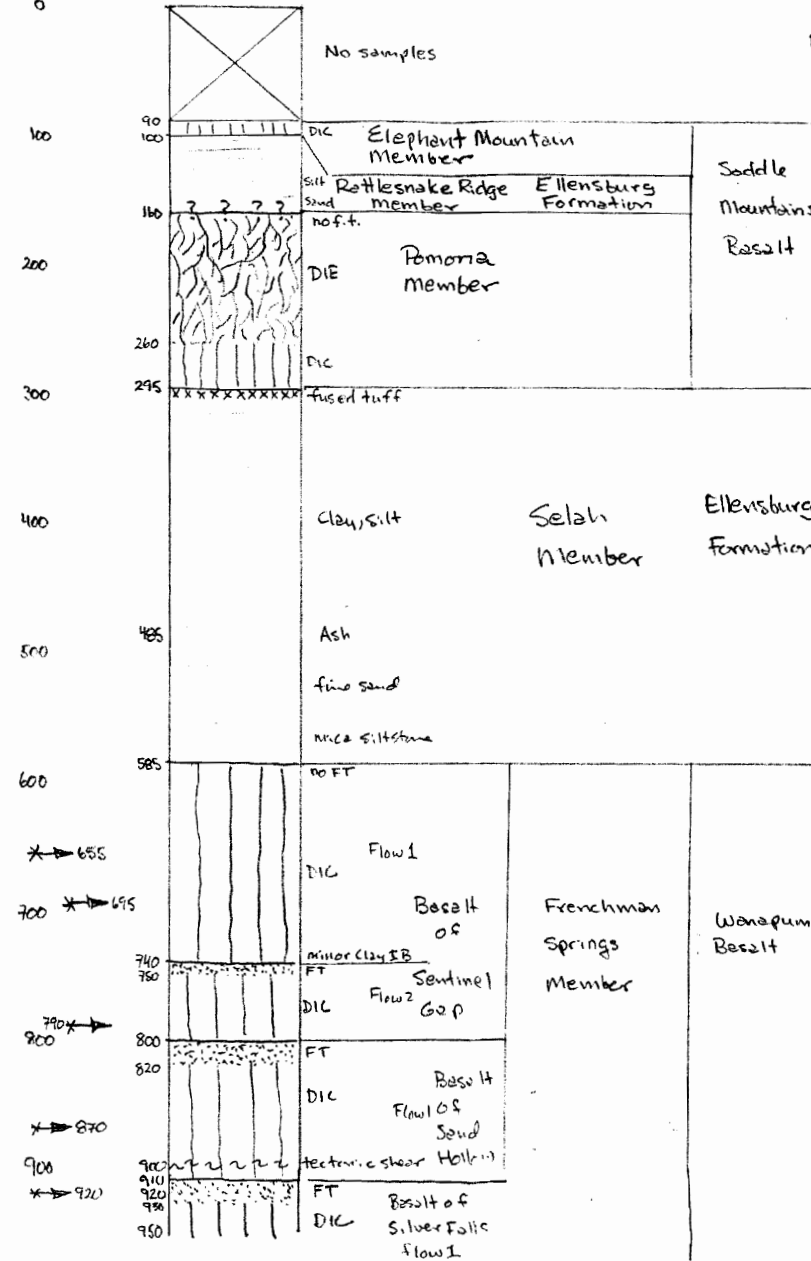
July 23, 2008 Page 1 of 2  
by Terry L. Tolan, RG

Depth  
(ft bgs)

UNITS

**EXPLANATION**

- FT - vesicular flow top
- DIC - Dense interior Columnar
- DIE - Dense interior Entablature
- \* - Geochem Sample
- IB - sand interbed



**RECEIVED**

FEB 17 2009

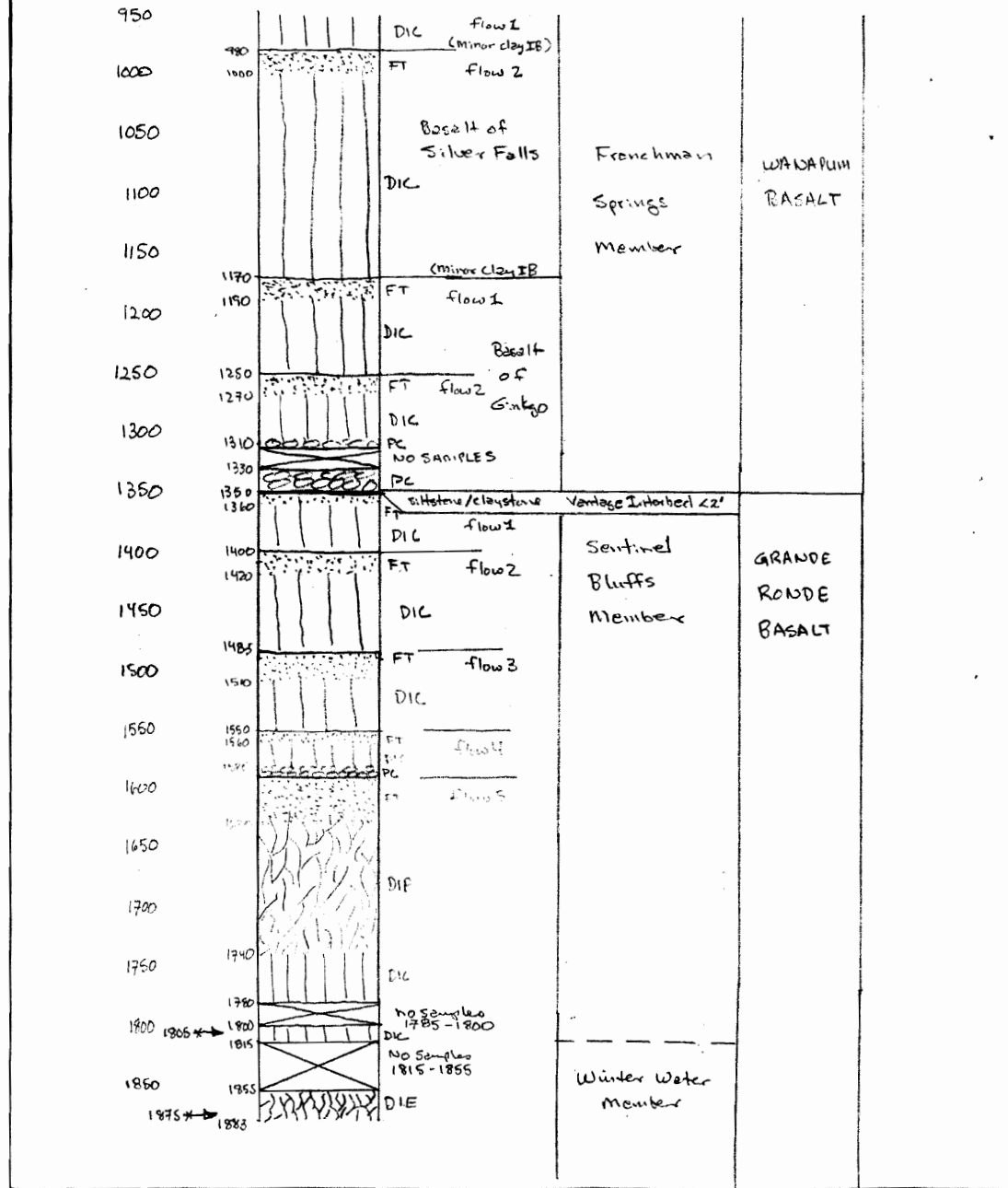
WATER RESOURCES DEPT  
SALEM, OREGON

# GILL 50322

Depth  
(ft bgs)

Jansen Well

Page 2 of 2  
July 23, 2008



**RECEIVED**

FEB 17 2009

WATER RESOURCES DEPT  
SALEM, OREGON