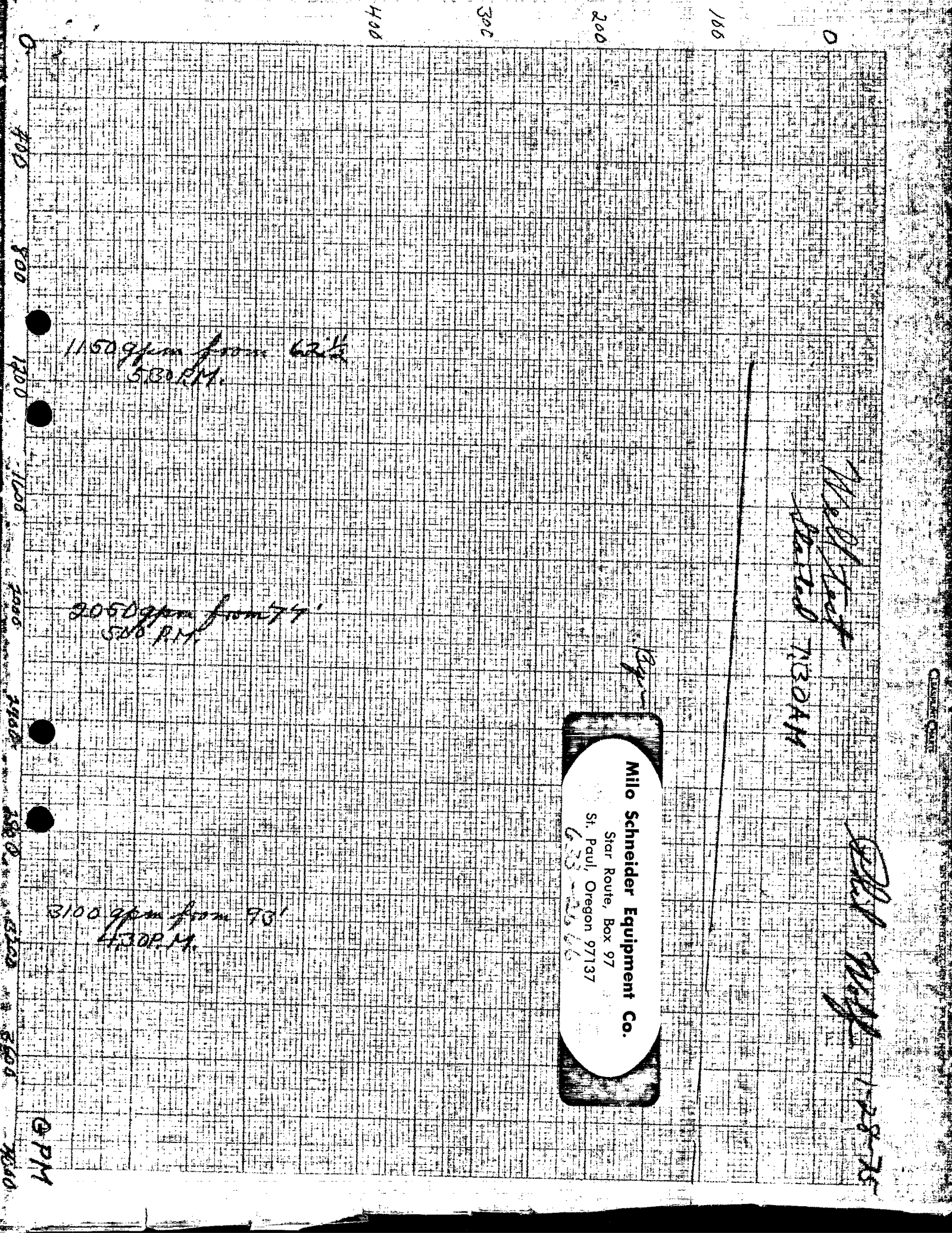




Material	From	To
Top soil	0	4
Brown clay	4	26
Brown sandy clay	26	35
Gray clay	35	66
Black sand	66	75
Gray clay	75	79
Brown hard clay	79	82
Black sand	82	92
Gray clay	92	110
Gray sandy clay	110	118
Brown clay	118	131
Black sand	131	141
Gray clay	141	151
Blue clay	151	180
Blue sandy clay	180	186
Gray clay	186	218
Black sand	218	255
Black sand & gravel (2")	255	272
Black sand	272	288
Black sand & gravel (2")	288	299
Blue clay	299	310



1150 gpm from 62 1/2'  
5:30 P.M.

2050 gpm from 74'  
5:20 P.M.

3100 gpm from 70'  
4:30 P.M.

Well Foot  
RATED 1300AH

EPA 1128-75

*EPA*

**Milo Schneider Equipment Co.**  
Star Route, Box 97  
St. Paul, Oregon 97137  
633-2566

@ PM