

City of Gervais
Well #2
By Schneider Drilling Co. - 1989

AUG 03 1989
WATER RESOURCES DEPT.
S. 12, 13, 14, 15

0-2	Top soil
2-15	Clay, brown, silty
15-46	Clay, grey, silty
46-62	Clay, grey, soft, little silty
62-69	Clay, dark grey, soft, silty
69-78	Sand, black, med-fine & some gravel, small
78-92	Clay, grey, soft, silty
92-94	Clay, brown, soft, silty
94-100	Clay, grey, med-soft, silty
100-103	Sand & gravel, brown
103-104	Clay, brown, sandy
104-106	Sand, brown, med & some gravel
106-132	Gravel, 3"-, brown, & sand, med, brown
132-142	Gravel, 5"-, brown & sand, brown, med
142-153	Clay, grey, med
153-161	Sand, black, med
161-174	Clay, grey, med
174-178	Sand, black, med
178-180	Clay, dark grey, med, little sandy
180-187	Sand, black, med-fine
187-199	Clay, brown, med
199-204	Clay, blue-green, med
204-211	Clay, grey, med-soft
211-219	Clay, grey, med-soft, sandy
219-221	Gravel, 4"- & sand, black, med w/clay, grey
221-236	Gravel, 4"- w/some sand, med
236-246	Clay, grey, med, sandy
246-247	Sand, black, med, cementation
247-265	Gravel, 4"- & some sand, cementation
265-269	Sand, black, med-fine
269-279	Clay, grey, soft

65'

70'

75'

Recovery Water Level

Time in Minutes →

$$T = \frac{264 \times 935}{4} = 61710 \text{ gpd/ft}$$

City of Gervais
Well No. 2

24 Hour Constant Rate Test
7/20-21/89

SCHEIDER EQUIPMENT, INC.
21881 RIVER RD. NE
ST. PAUL, OR 97137
PH: (503) 633-2666

$$Q = 935 \text{ gpm } AS=7 \quad T = 264 \times 935 = 244935 \text{ gpd/ft}$$

AS=4
(Use recovery data above)

SWL 60.5'

Use data from Recovery Level (Use right side of water level)

Pumping Level in Feet Below Datum
(Datum is +2' above ground level)

165 170 175 180 185 190 195 200

Pumping level in Feet Below Datum
(Datum is +2' above ground level)

SWL 61.6

Time in Minutes →

City of Genuis

Well No. 2

2 Hour Test (Sand Content)

SCHNEIDER EQUIPMENT, INC.
21881 RIVER RD., N.E.
ST. PAST, OR 97137
PH. (503) 633-2668

$Q_{avg} = 49 \text{ gpm}$ $\Delta S = 2$

$$T_s = \frac{491.244}{2} = 64,812.2 \text{ gpd/ft}$$

avg.
49 gpm

adjusted Q

125

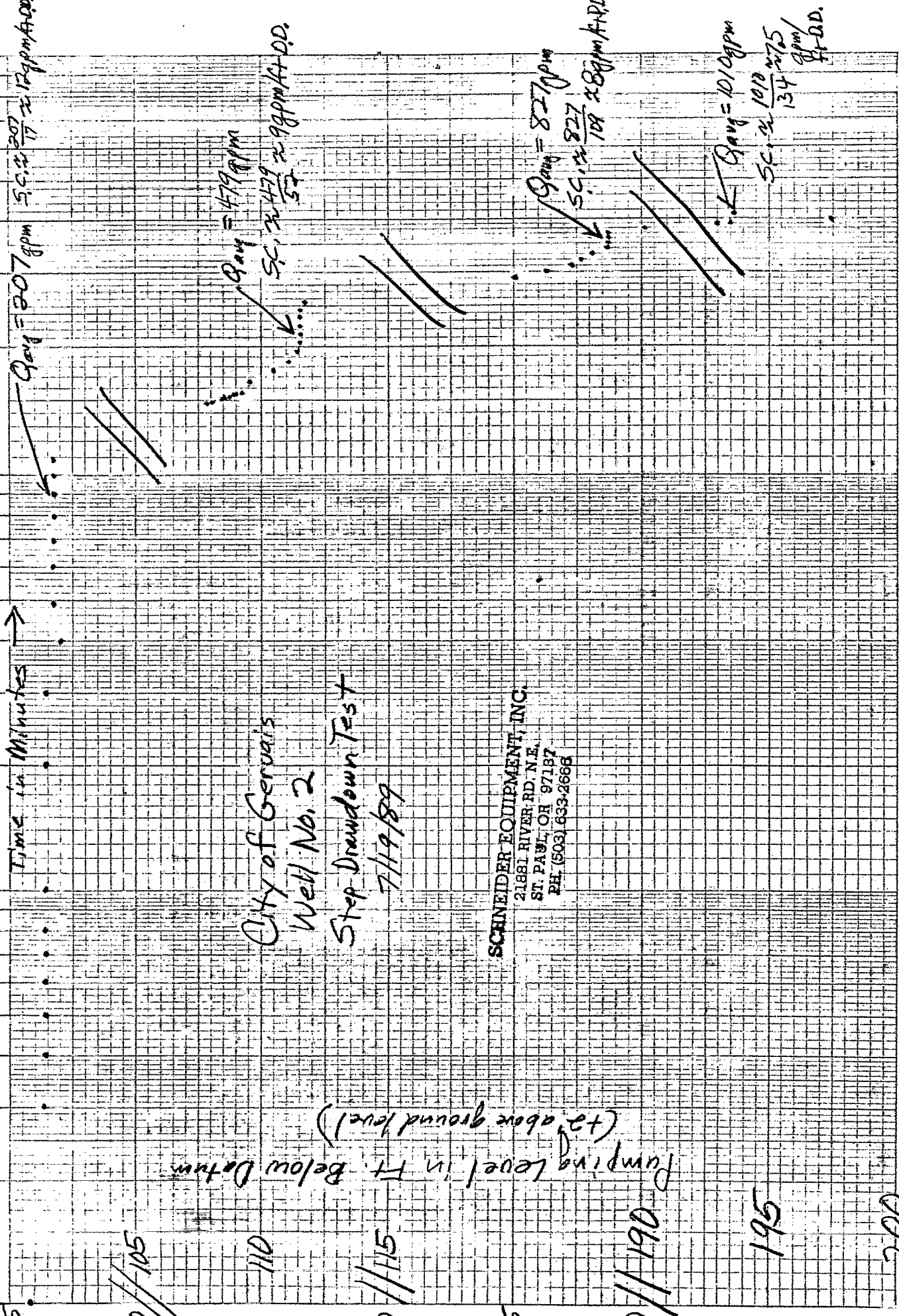
120

115

110

105

SWL ≈ 60
100
1000



City of Gervais
Well No. 2
Step Drawdown Test
7/19/89

SCNEIDER EQUIPMENT, INC.
21881 RIVER RD. N.E.
ST. PAUL, OR 97187
PH. (503) 633-2666

Pumping level in Ft. Below Datum
(+ above ground level)

80 // 105
110
140 // 115
165
170 // 190
195
200