

RECEIVED

5N/28E/14C

JUN 23 1995

63398

STATE OF OREGON WATER WELL REPORT (as required by ORS 537.765)

5 WMAT 6373

(START CARD) #

Instructions for completing this report are on the last page of this form.

WATER RESOURCES DEPT.

SALEM, OREGON

(1) OWNER:

Name Charles Kirk Trust, Address Rt 3 Box 3802, City Hermiston, State OR, Zip 97838

(2) TYPE OF WORK

New Well, Deepening, Alteration, Abandonment

(3) DRILL METHOD:

Rotary Air, Rotary Mud, Cable, Auger, Other

(4) PROPOSED USE:

Domestic, Community, Industrial, Irrigation, Thermal, Injection, Livestock, Other

(5) BORE HOLE CONSTRUCTION:

Special Construction approval, Depth of Completed Well 365 ft.

Table with columns: HOLE, SEAL, Diameter, From, To, Material, Sacks or pounds

How was seal placed: Method A, B, C, D, E

Backfill placed from, Gravel placed from

(6) CASING/LINER:

Table with columns: Diameter, From, To, Gauge, Steel, Plastic, Welded, Threaded

Final location of shoe(s) 19

(7) PERFORATIONS/SCREENS:

Table with columns: From, To, Slot size, Number, Diameter, Tele/pipe size, Casing, Liner

(8) WELL TESTS: Minimum testing time is 1 hour

Table with columns: Pump, Bailer, Air, Artesian, Yield gal/min, Drawdown, Drill stem at, Time

Temperature of water 59, Depth Artesian Flow Found, Was a water analysis done?

(9) LOCATION OF WELL by legal description:

County, Township 5 N or S Range 28 E or W. WM, Section 14 NE 1/4 SW 1/4, Tax Lot 1203, Street Address of Well Hwy 730

(10) STATIC WATER LEVEL:

108 ft. below land surface, Date 6-9-95, Artesian pressure, lb. per square inch, Date

(11) WATER BEARING ZONES:

Table with columns: From, To, Estimated Flow Rate, SWL

(12) WELL LOG:

Table with columns: Material, From, To, SWL

Date started 6-7-95, Completed 6-9-95

(unbonded) Water Well Constructor Certification:

I certify that the work I performed on the construction, alteration, or abandonment of this well is in compliance with Oregon water supply well construction standards.

Signed, WWC Number, Date

(bonded) Water Well Constructor Certification:

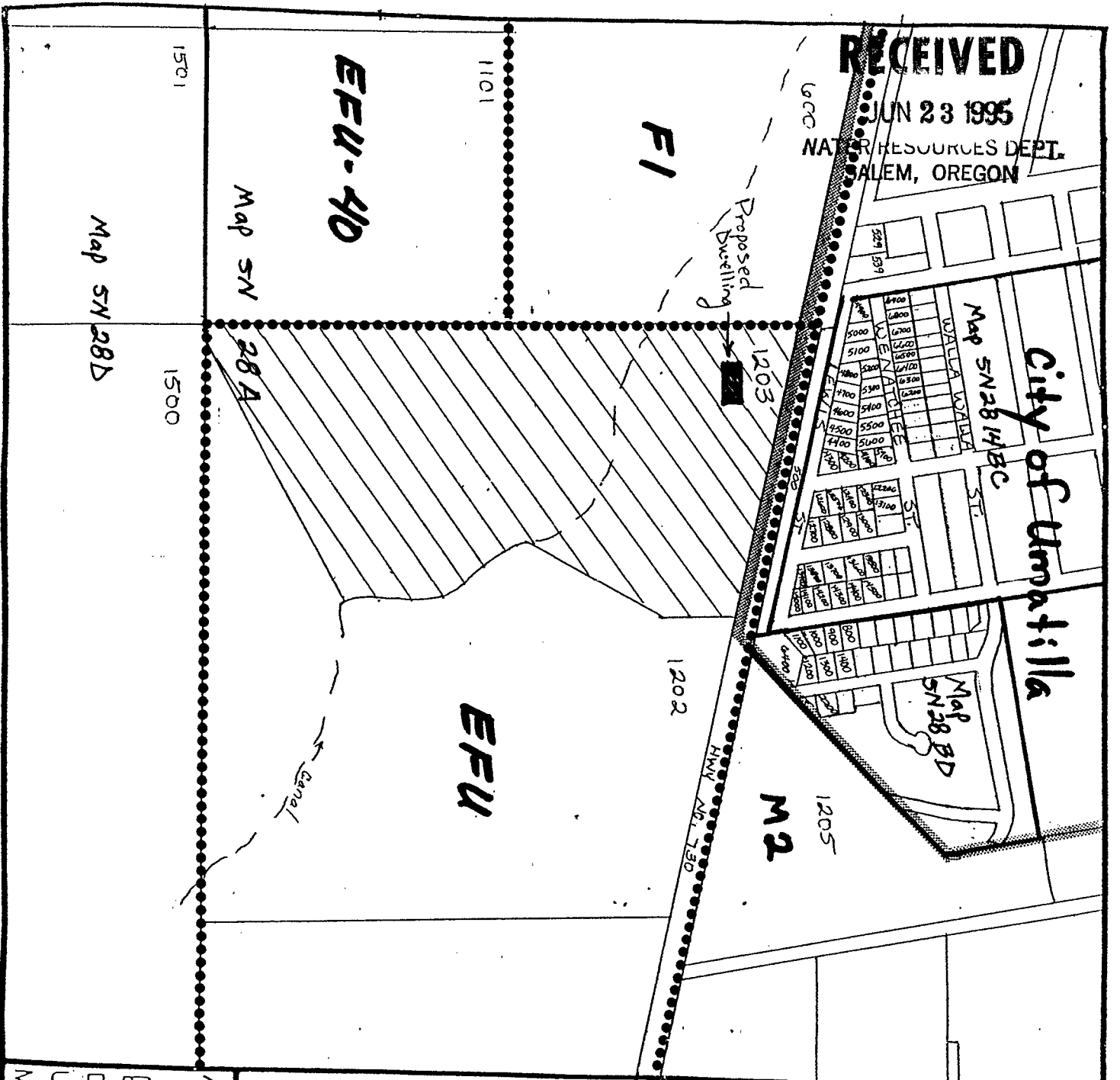
I accept responsibility for the construction, alteration, or abandonment work performed on this well during the construction dates reported above.

Signed, WWC Number 259, Date 6-10-95

RECEIVED

JUN 23 1995

NATURAL RESOURCES DEPT.
ALEM, OREGON



See next page for adjacent property owners

Charles Kik Trustee

of Charles Kik Trust

PT 3 BOX 3802

Hermiston, OR 97838

Kik Conditional Use Request #2-753-95
Charles Kik, Applicant/Owner

▨ SUBJECT PARCEL

DATE 5-22-95 SCALE 1"=650'

Umatilla County Planning Dept.
MAP NO. 5N28A



RECEIVED

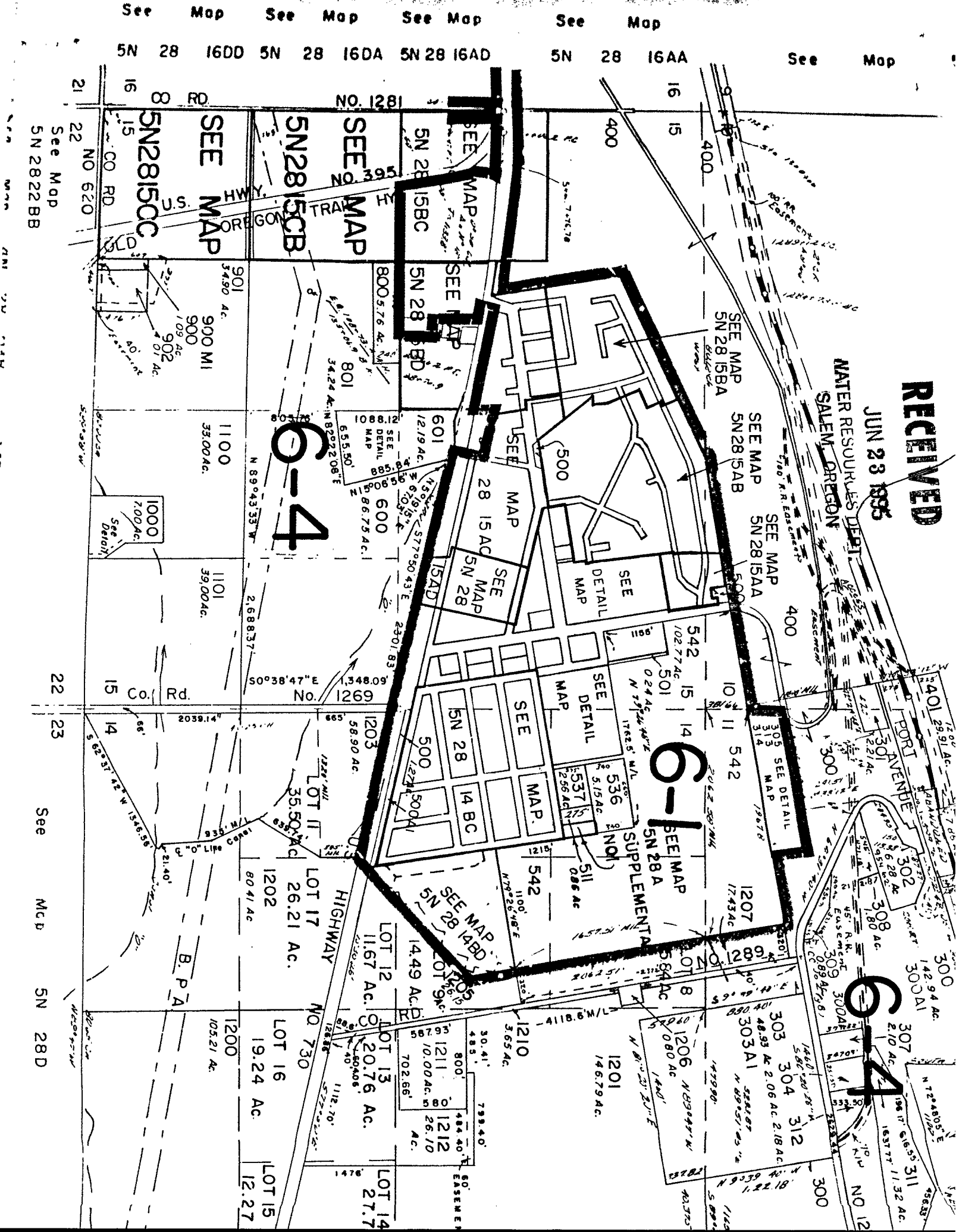
JUN 23 1935

WATER RESOURCES DEPT.
SALEM, OREGON

6-4

6-1

6-4



See Map
5N 2822BB

SEE MAP
5N2815CC

SEE MAP
5N2815CB

SEE MAP
5N 28 15BD

SEE MAP
5N 28 15BC

SEE MAP
5N 28 15BD

SEE MAP
5N 28 15BC

SEE MAP
5N 28 15BA

SEE MAP
5N 28 15AB

SEE MAP
5N 28 15AA

SEE MAP
5N 28 15BA

SEE MAP
5N 28 15AB

SEE MAP
5N 28 15AA

See Detail
1000
700 AC.

1101
39.00 AC.

1100
35.00 AC.

901
34.90 AC.

900
109 AC.

902
107 AC.

801
34.24 AC.

800
5.76 AC.

601
12.19 AC.

600
86.75 AC.

500
14.49 AC.

500
26.21 AC.

500
19.24 AC.

500
12.27 AC.

500
20.76 AC.

500
20.76 AC.

500
20.76 AC.

500
20.76 AC.

500
20.76 AC.

500
20.76 AC.

500
20.76 AC.

500
20.76 AC.

See Map
5N 2822BB

1101
39.00 AC.

1100
35.00 AC.

901
34.90 AC.

900
109 AC.

902
107 AC.

801
34.24 AC.

800
5.76 AC.

601
12.19 AC.

600
86.75 AC.

500
14.49 AC.

500
26.21 AC.

500
19.24 AC.

500
12.27 AC.

500
20.76 AC.

500
20.76 AC.

500
20.76 AC.

500
20.76 AC.

500
20.76 AC.

500
20.76 AC.

500
20.76 AC.

See Map
5N 2822BB

1101
39.00 AC.

1100
35.00 AC.

901
34.90 AC.

900
109 AC.

902
107 AC.

801
34.24 AC.

800
5.76 AC.

601
12.19 AC.

600
86.75 AC.

500
14.49 AC.

500
26.21 AC.

500
19.24 AC.

500
12.27 AC.

500
20.76 AC.

500
20.76 AC.

500
20.76 AC.

500
20.76 AC.

500
20.76 AC.

500
20.76 AC.

500
20.76 AC.

See Map
5N 2822BB

1101
39.00 AC.

1100
35.00 AC.

901
34.90 AC.

900
109 AC.

902
107 AC.

801
34.24 AC.

800
5.76 AC.

601
12.19 AC.

600
86.75 AC.

500
14.49 AC.

500
26.21 AC.

500
19.24 AC.

500
12.27 AC.

500
20.76 AC.

500
20.76 AC.

500
20.76 AC.

500
20.76 AC.

500
20.76 AC.

500
20.76 AC.

500
20.76 AC.

See Map
5N 2822BB

1101
39.00 AC.

1100
35.00 AC.

901
34.90 AC.

900
109 AC.

902
107 AC.

801
34.24 AC.

800
5.76 AC.

601
12.19 AC.

600
86.75 AC.

500
14.49 AC.

500
26.21 AC.

500
19.24 AC.

500
12.27 AC.

500
20.76 AC.

500
20.76 AC.

500
20.76 AC.

500
20.76 AC.

500
20.76 AC.

500
20.76 AC.

500
20.76 AC.