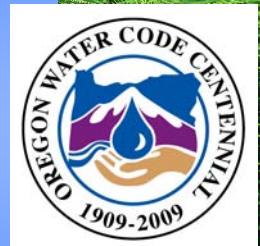


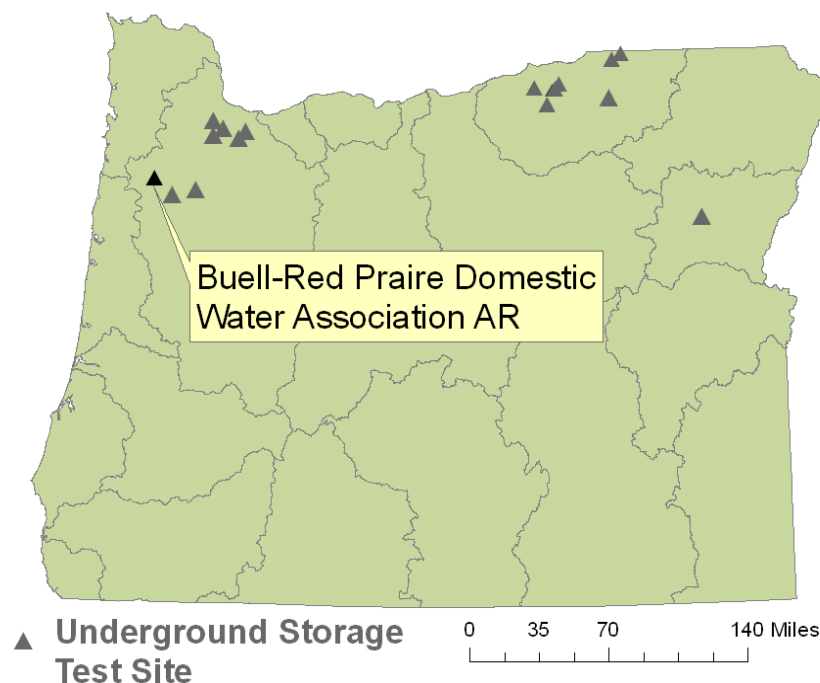


Oregon Underground Storage: Buell-Red Prairie Domestic Water Association AR



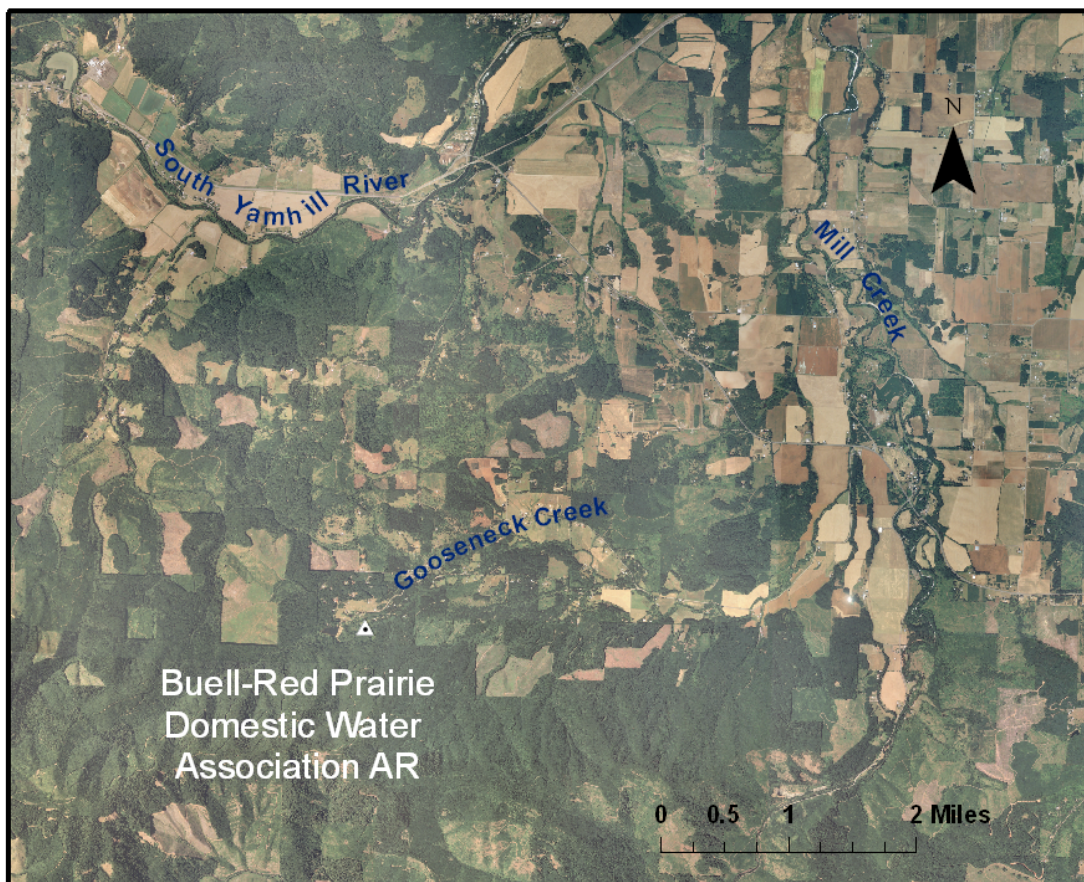
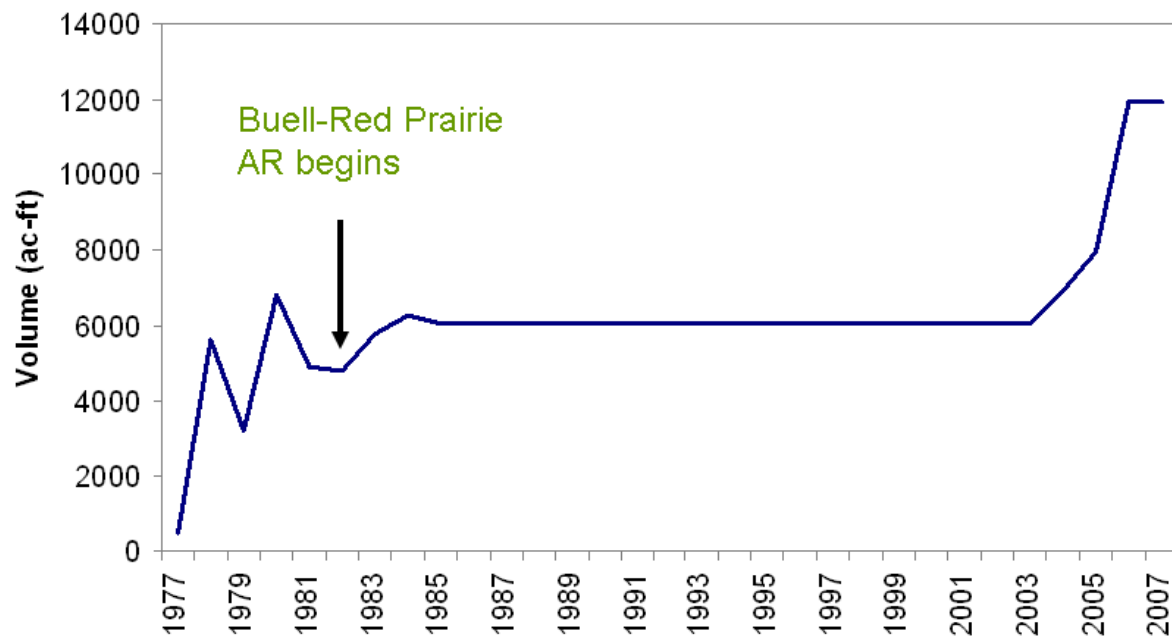
Project Background

- Buell-Red Prairie Domestic Water Association is located in Polk and Yamhill Counties, Oregon.

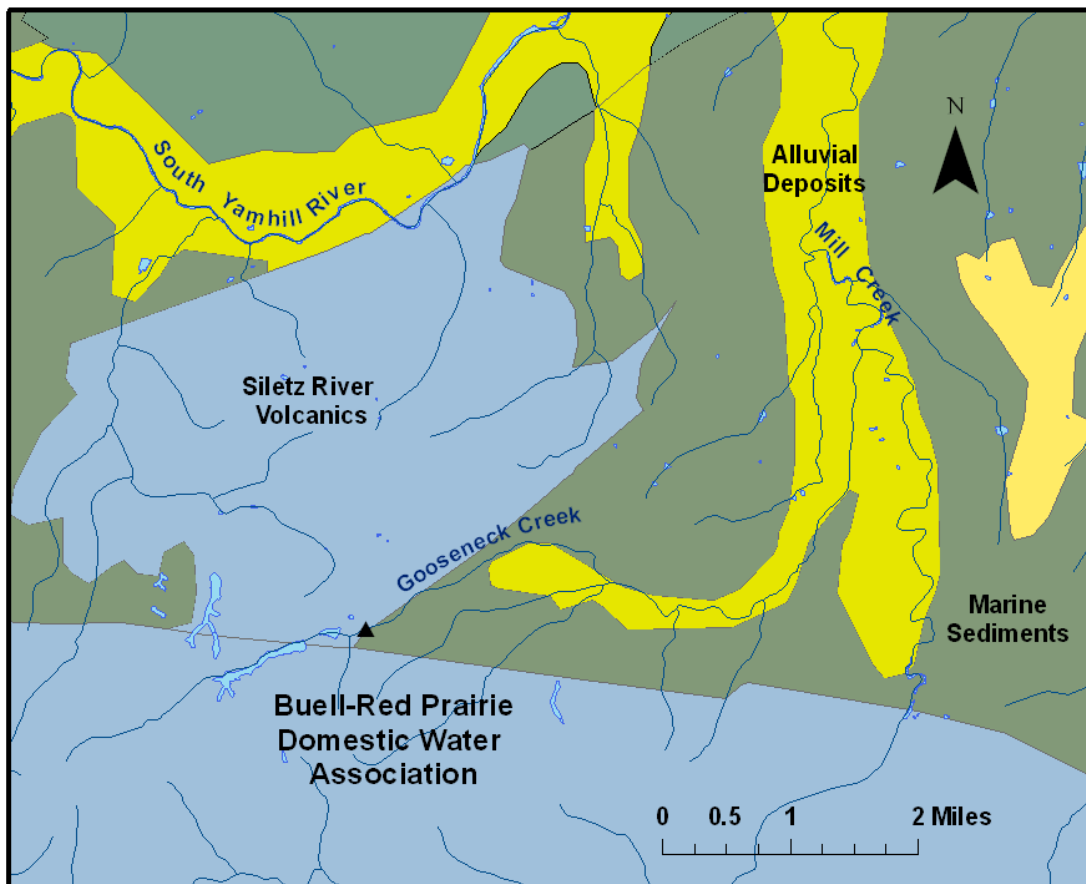


- The association serves less than 1,000 rural residents from 2 volcanic tuff wells.
- Like much of the Willamette Valley, this site receives over 40 inches of rain per year, but very little between July and September.
- Groundwater levels decreased in the 1980's due to pumping of these wells, to the point that the Association's wells were almost unusable. Artificial recharge by well injection began in 1983. Recharge caused water levels to improve and the wells can again support the water association.
- The project acquired a permit to continue AR in 1991.

Annual Storage by AR in Oregon



- **Source Water:** Gooseneck Creek provides recharge water during high flow months, when Oregon Fish and Wildlife Department's permit-specific minimum stream flows are met.
- **Aquifer:** Siletz River Volcanics, including the volcanic tuffs which support these wells, generally produce low yields.
- **AR:** This project was authorized as an AR site before the current Oregon ASR rules were created. However, water quality must meet standards of Oregon Health Division and Oregon Department of Environmental Quality. Injection occurs at a former irrigation well at 75 gpm, with a maximum annual total of 61 acre-feet.



Buell-Red Prairie Domestic Water Association provides water from basalt of the Siletz River Volcanics, which is a moderately low-yield aquifer.